

À des fins de recherche uniquement

# Anticorps Polyclonal de lapin anti-AGGF1



Numéro de catalogue: 11889-1-AP

Phare

20 Publications

## Informations de base

<b>Numéro de catalogue:</b> 11889-1-AP	<b>Numéro d'acquisition GenBank:</b> BC029382	<b>Méthode de purification:</b> Purification par affinité contre l'antigène
<b>Taille:</b> 150ul, Concentration: 700 µg/ml by Nanodrop and 360 µg/ml by Bradford method using BSA as the standard;	<b>Identification du gène (NCBI):</b> 55109	<b>Dilutions recommandées:</b> WB 1:1000-1:8000
<b>Hôte:</b> Lapin	<b>Nom complet:</b> angiogenic factor with G patch and FHA domains 1	
<b>Isotype:</b> IgG	<b>MW calculé:</b> 714 aa, 81 kDa	
<b>Immunogen Catalog Number:</b> AG2497	<b>MW observés:</b> 84-100 kDa	

## Applications

<b>Applications testées:</b> WB, ELISA	<b>Contrôles positifs:</b> WB : cellules HUVEC, cellules HeLa, cellules L02
<b>Demandes citées:</b> IF, IHC, IP, WB	
<b>Spécificité de l'espèce:</b> Humain, rat, souris	
<b>Espèces citées:</b> Humain, rat, souris, singe Rhésus, Macaque	

## Informations générales

The angiogenic factor gene, AGGF1 (or VG5Q), is identified as a candidate susceptibility gene for Klippel-Trenaunay syndrome (KTS) which is a severe congenital disorder characterized by capillary malformations, venous malformations or varicose veins, and hypertrophy of the affected tissues. AGGF1 protein can bind to endothelial cells and promote cell proliferation. AGGF1 shows strong expression in blood vessels and is secreted as vessel formation is initiated. Regulation of AGGF1 by GATA1 may play roles in endothelial cell biology and angiogenesis. Catalog#11889-1-AP was validated by KO and KD methods in scientists' studies (PMID: 28153879; 27513923), and the observed MW is 84 kDa.

## Publications notables

Autrice	Pubmed ID	Journal	Application
Lu Qiulun Q	23110058	PLoS One	WB,IHC
Jing Shao	27865839	Biochem Biophys Res Commun	WB
Jinyan Zhao	35608889	FASEB J	WB,IF

## Stockage

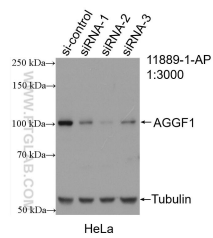
**Stockage:**  
Stocker à -20°C. Stable pendant un an après l'expédition.  
**Tampon de stockage:**  
PBS avec azoture de sodium à 0,02 % et glycérol à 50 % pH 7,3  
L'aliquotage n'est pas nécessaire pour le stockage à -20C

\*\*\* Les 20ul contiennent 0,1% de BSA.

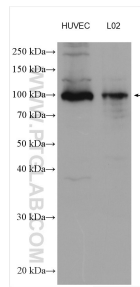
For technical support and original validation data for this product please contact:  
T: 1 (888) 4PTGLAB (1-888-478-4522) (toll free in USA), or 1(312) 455-8498 (outside USA)  
E: proteintech@ptglab.com  
W: ptglab.com

This product is exclusively available under Proteintech Group brand and is not available to purchase from any other manufacturer.

## Données de validation sélectionnées



WB result of AGGF1 antibody (11889-1-AP; 1:3000; incubated at room temperature for 1.5 hours) with sh-Control and sh-AGGF1 transfected HeLa cells.



Various lysates were subjected to SDS PAGE followed by western blot with 11889-1-AP (AGGF1 antibody) at dilution of 1:4000 incubated at room temperature for 1.5 hours.