

À des fins de recherche uniquement

Anticorps Polyclonal de lapin anti-GRAP2



Numéro de catalogue: 11894-1-AP

Informations de base

Numéro de catalogue: 11894-1-AP	Numéro d'acquisition GenBank: BC026002	Méthode de purification: Purification par affinité contre l'antigène
Taille: 150ul , Concentration: 400 µg/ml by Nanodrop and 200 µg/ml by Bradford method using BSA as the standard;	Identification du gène (NCBI): 9402	Dilutions recommandées: WB 1:500-1:2000
Hôte: Lapin	Nom complet: GRB2-related adaptor protein 2	
Isotype: IgG	MW calculé 330 aa, 38 kDa	
Immunogen Catalog Number: AG2510	MW observés: 38 kDa	

Applications

Applications testées: WB, ELISA	Contrôles positifs: WB : cellules K-562,
Spécificité de l'espèce: Humain, rat, souris	

Informations générales

GRAP2 is a member of the GRB2/Sem5/Drk family. This member is an adaptor-like protein involved in leukocyte-specific protein-tyrosine kinase signaling. Like its related family member, GRB2-related adaptor protein (GRAP), this protein contains an SH2 domain flanked by two SH3 domains. This protein interacts with other proteins, such as GRB2-associated binding protein 1 (GAB1) and the SLP-76 leukocyte protein (LCP2), through its SH3 domains. (refer to Wikipedia)

Stockage

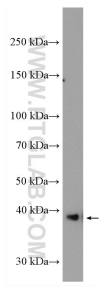
Stockage:
Stocker à -20°C. Stable pendant un an après l'expédition.
Tampon de stockage:
PBS avec azoture de sodium à 0,02 % et glycérol à 50 % pH 7,3
L'aliquotage n'est pas nécessaire pour le stockage à -20C

*** Les 20ul contiennent 0,1% de BSA.

For technical support and original validation data for this product please contact:
T: 1 (888) 4PTGLAB (1-888-478-4522) (toll free in USA), or 1(312) 455-8498 (outside USA) E: proteintech@ptglab.com W: ptglab.com

This product is exclusively available under Proteintech Group brand and is not available to purchase from any other manufacturer.

Données de validation sélectionnées



K-562 cells were subjected to SDS PAGE followed by western blot with 11894-1-AP (GRAP2 antibody) at dilution of 1:1000 incubated at room temperature for 1.5 hours.