

À des fins de recherche uniquement

Anticorps Polyclonal de lapin anti-PHF19



Numéro de catalogue: 11895-1-AP

Phare

9 Publications

Informations de base

Numéro de catalogue:
11895-1-AP

Taille:
150ul, Concentration: 450 µg/ml by Nanodrop and 440 µg/ml by Bradford method using BSA as the standard;

Hôte:
Lapin

Isotype:
IgG

Immunogen Catalog Number:
AG2511

Numéro d'acquisition GenBank:
BC022374

Identification du gène (NCBI):
26147

Nom complet:
PHD finger protein 19

MW calculé:
580 aa, 63 kDa

MW observés:
66 kDa

Méthode de purification:
Purification par affinité contre l'antigène

Dilutions recommandées:
WB 1:200-1:1000
IF 1:20-1:200

Applications

Applications testées:
IF, WB, ELISA

Demandes citées:
IHC, WB

Spécificité de l'espèce:
Humain, rat, souris

Espèces citées:
Humain, souris

Contrôles positifs:

WB : tissu cérébral de rat,

IF : cellules SE de souris,

Informations générales

PHD FINGER PROTEIN 19 (PHF19), a protein homologous to the Drosophila 'Polycomblike' (Pcl) protein, encoded by human gene PCL, which encodes 2 deduced proteins: a short form of 207 aa and a long form of 580 aa. The PCL family proteins contains a PCL homology domain, a Tudor domain, 2 PHD fingers and a C-terminal tail. It is highly expressed in thymus and heart, while 508aa form predominant in placenta, skeletal muscle and kidney and 207aa form in liver and peripheral blood leukocytes. Both of these forms can inhibit transcriptional activity. And the long form is correlated with cancer. Acts as a transcriptional repressor. The mRNA level of PHF19 is low in many normal tissue, it's elevated in cancer-derived cell lines.

Publications notables

Autrice	Pubmed ID	Journal	Application
Hong-Li Yang	35003347	J Cancer	WB
Haixiao Wang	32449434	Scand J Gastroenterol	WB, IHC
Souhila Abdelfettah	32256978	Oncotarget	WB

Stockage

Stockage:

Stocker à -20°C. Stable pendant un an après l'expédition.

Tampon de stockage:

PBS avec azoture de sodium à 0,02 % et glycérol à 50 % pH 7,3

L'aliquotage n'est pas nécessaire pour le stockage à -20C

*** Les 20ul contiennent 0,1% de BSA.

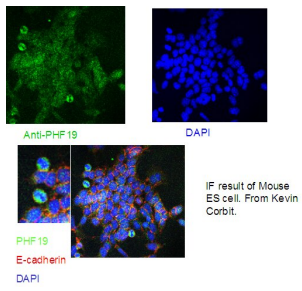
For technical support and original validation data for this product please contact:

T: 1 (888) 4PTGLAB (1-888-478-4522) (toll free in USA), or 1(312) 455-8498 (outside USA)

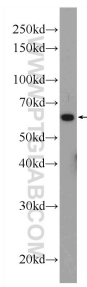
E: proteintech@ptglab.com
W: ptglab.com

This product is exclusively available under Proteintech Group brand and is not available to purchase from any other manufacturer.

Données de validation sélectionnées



IF result of Mouse ES cell From Kevin Corbit.



rat brain tissue were subjected to SDS PAGE followed by western blot with 11895-1-AP (PHF 19 Antibody) at dilution of 1:300 incubated at room temperature for 1.5 hours.