

À des fins de recherche uniquement

# Anticorps Polyclonal de lapin anti-RGR



Numéro de catalogue: 11904-1-AP

## Informations de base

Numéro de catalogue:  
11904-1-AP

Taille:  
150ul, Concentration: 650 µg/ml by Nanodrop and 333 µg/ml by Bradford method using BSA as the standard;

Hôte:  
Lapin

Isotype:  
IgG

Immunogen Catalog Number:  
AG2552

Numéro d'acquisition GenBank:  
BC008094

Identification du gène (NCBI):  
5995

Nom complet:  
retinal G protein coupled receptor

MW calculé  
32 kDa

MW observés:  
32 kDa, 26 kDa

Méthode de purification:  
Purification par affinité contre l'antigène

Dilutions recommandées:  
WB 1:500-1:1000  
IP 0.5-4.0 ug for IP and 1:200-1:1000 for WB  
IHC 1:500-1:2000

## Applications

Applications testées:  
FC, IHC, IP, WB, ELISA

Spécificité de l'espèce:  
Humain, rat, souris

**Remarque-IHC: il est suggéré de démasquer l'antigène avec un tampon de TE buffer pH 9.0; (\*) À défaut, le démasquage de l'antigène peut être effectué avec un tampon citrate pH 6.0.**

Contrôles positifs:

WB : tissu cardiaque humain,

IP : cellules PC-3,

IHC : tissu rétinien de souris, tissu de cancer de la prostate humaine

## Informations générales

RGR is a G protein-coupled receptor preferentially expressed at high levels in the retinal pigment epithelium (RPE) and Mueller cells of the neural retina. Like other opsins which bind retinaldehyde, it contains a conserved lysine residue in the seventh transmembrane domain. RGR acts as a photoisomerase to catalyze the conversion of all-trans-retinal to 11-cis-retinal. The reverse isomerization occurs with rhodopsin in retinal photoreceptor cells. The gene of PGR may be associated with autosomal recessive and autosomal dominant retinitis pigmentosa (arRP and adRP, respectively). Alternative splicing results in multiple transcript variants encoding different isoforms.

## Stockage

Stockage:

Stocker à -20°C. Stable pendant un an après l'expédition.

Tampon de stockage:

PBS avec azoture de sodium à 0,02 % et glycérol à 50 % pH 7,3

L'aliquotage n'est pas nécessaire pour le stockage à -20C

\*\*\* Les 20ul contiennent 0,1% de BSA.

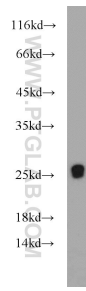
For technical support and original validation data for this product please contact:

T: 1 (888) 4PTGLAB (1-888-478-4522) (toll free in USA), or 1(312) 455-8498 (outside USA)

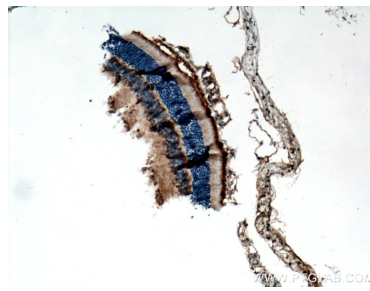
E: proteintech@ptglab.com  
W: ptglab.com

This product is exclusively available under Proteintech Group brand and is not available to purchase from any other manufacturer.

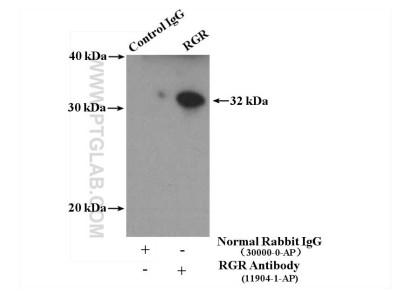
## Données de validation sélectionnées



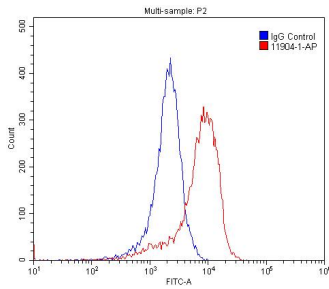
human heart tissue were subjected to SDS PAGE followed by western blot with 11904-1-AP (RGR antibody) at dilution of 1:500 incubated at room temperature for 1.5 hours.



Immunohistochemical analysis of paraffin-embedded mouse retina tissue slide using 11904-1-AP (RGR antibody) at dilution of 1:1000 (under 10x lens. Heat mediated antigen retrieval with Tris-EDTA buffer (pH 9.0).



IP Result of anti-RGR (IP:11904-1-AP, 4ug; Detection:11904-1-AP 1:300) with PC-3 cells lysate 4000ug.



1X10<sup>6</sup> PC-3 cells were stained with 0.2ug RGR antibody (11904-1-AP, red) and control antibody (blue). Fixed with 4% PFA blocked with 3% BSA (30 min). Alexa Fluor 488-conjugated AffiniPure Goat Anti-Rabbit IgG(H+L) with dilution 1:1500.