

À des fins de recherche uniquement

Anticorps Polyclonal de lapin anti-ATF2



Numéro de catalogue: 11908-1-AP

3 Publications

Informations de base

Numéro de catalogue:
11908-1-AP

Taille:
150ul, Concentration: 600 µg/ml by Nanodrop and 347 µg/ml by Bradford method using BSA as the standard;

Hôte:
Lapin

Isotype:
IgG

Immunogen Catalog Number:
AG2581

Numéro d'acquisition GenBank:
BC026175

Identification du gène (NCBI):
1386

Nom complet:
activating transcription factor 2

MW calculé
209 aa, 23 kDa

MW observés:
60 kDa, 64 kDa

Méthode de purification:
Purification par affinité contre l'antigène

Dilutions recommandées:
WB 1:500-1:2000
IP 0.5-4.0 ug for IP and 1:200-1:1000 for WB
IF 1:50-1:500

Applications

Applications testées:
IF, IP, WB, ELISA

Demandes citées:
IF, WB

Spécificité de l'espèce:
Humain, souris

Espèces citées:
Humain, rat

Contrôles positifs:

WB : cellules HEK-293T, cellules HeLa, cellules K-562, tissu cérébral de souris

IP : tissu cérébral de souris,

IF : cellules HeLa,

Informations générales

ATF2, also named as CREB2 and CREBP1, contains one bZIP domain and one C2H2-type zinc finger. It belongs to the bZIP family. ATF2 binds to the cAMP-responsive element(CRE), an octameric palindrome. It forms a homodimer or a heterodimer with c-Jun and stimulates CRE-dependent transcription. It is also a histone acetyltransferase (HAT) that specifically acetylates histones H2B and H4 in vitro; thus it may represent a class of sequence-specific factors that activate transcription by direct effects on chromatin components. ATF2 binds DNA as a dimer and can form a homodimer in the absence of DNA. It binds through its N-terminal region to UTF1 which acts as a coactivator of ATF2 transcriptional activity. This antibody can recognize all the isoforms of human ATF2. The molecular weight detected is larger than the theoretical value, which may be related to protein modification. About 65-68 kDa band detected in the articles(PMID: 19135136; PMID: 28628081).

Publications notables

Autrice	Pubmed ID	Journal	Application
Zhi-yu Li	36302622	Korean J Physiol Pharmacol	WB
Tsung-Chang Tsai	29587440	Mar Drugs	WB
Qi Deng	35116466	Transl Cancer Res	WB,IF

Stockage

Stockage:

Stocker à -20°C. Stable pendant un an après l'expédition.

Tampon de stockage:

PBS avec azoture de sodium à 0,02 % et glycérol à 50 % pH 7,3

L'aliquotage n'est pas nécessaire pour le stockage à -20C

*** Les 20ul contiennent 0,1% de BSA.

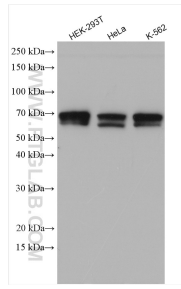
For technical support and original validation data for this product please contact:

T: 1 (888) 4PTGLAB (1-888-478-4522) (toll free in USA), or 1(312) 455-8498 (outside USA)

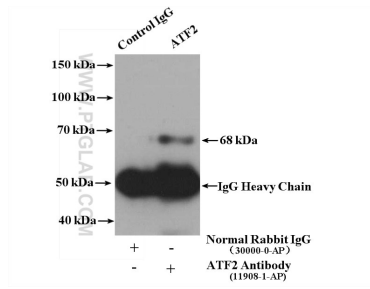
E: proteintech@ptglab.com
W: ptglab.com

This product is exclusively available under Proteintech Group brand and is not available to purchase from any other manufacturer.

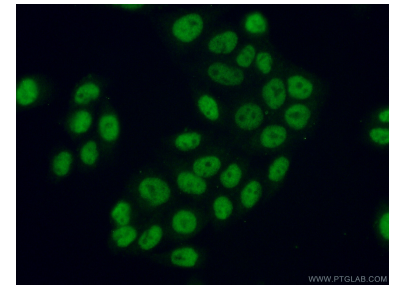
Données de validation sélectionnées



Various lysates were subjected to SDS PAGE followed by western blot with 11908-1-AP (ATF2 antibody) at dilution of 1:1000 incubated at room temperature for 1.5 hours.



IP result of anti-ATF2 (IP:11908-1-AP, 4ug; Detection:11908-1-AP 1:300) with mouse brain tissue lysate 3200 ug.



Immunofluorescent analysis of (10% Formaldehyde) fixed HeLa cells using 11908-1-AP (ATF2 antibody) at dilution of 1:50 and Alexa Fluor 488-conjugated AffiniPure Goat Anti-Rabbit IgG(H+L).