

À des fins de recherche uniquement

# Anticorps Polyclonal de lapin anti-RABL3



Numéro de catalogue: 11916-1-AP

Phare

2 Publications

## Informations de base

Numéro de catalogue:

11916-1-AP

Taille:

150ul, Concentration: 133 µg/ml by Bradford method using BSA as the standard;

Hôte:

Lapin

Isotype:

IgG

Immunogen Catalog Number:

AG2531

Numéro d'acquisition GenBank:

BC020832

Identification du gène (NCBI):

285282

Nom complet:

RAB, member of RAS oncogene family-like 3

MW calculé

236 aa, 26 kDa

MW observés:

26 kDa

Méthode de purification:

Purification par affinité contre l'antigène

Dilutions recommandées:

WB 1:1000-1:5000

IP 0.5-4.0 ug for IP and 1:200-1:1000 for WB

IHC 1:20-1:200

IF 1:200-1:800

## Applications

Applications testées:

FC, IF, IHC, IP, WB, ELISA

Demandes citées:

WB

Spécificité de l'espèce:

Humain, souris

Espèces citées:

Humain

**Remarque-IHC: il est suggéré de démasquer l'antigène avec un tampon de TE buffer pH 9,0; (\*) A défaut, 'le démasquage de l'antigène peut être 'effectué avec un tampon citrate pH 6,0.**

Contrôles positifs:

WB : cellules HEK-293, cellules HUVEC, cellules U-251, tissu cérébral de souris, tissu cérébral humain, tissu pulmonaire humain

IP : tissu pulmonaire de souris,

IHC : tissu de cancer du sein humain, tissu de cancer du col de l'utérus humain, tissu de cancer du foie humain, tissu rénal humain

IF : cellules A549,

## Informations générales

The gene of Rabl3 is located on 3q13.3 and is composed of eight exons and seven introns. It is a member of the Rab subfamily, the largest group in the Ras superfamily of small guanosine triphosphatases (GTPases).

## Publications notables

Autrice	Pubmed ID	Journal	Application
Weihua Zhang	27164297	Med Sci Monit	WB
Li Qi Q	20596630	Oncol Rep	WB

## Stockage

Stockage:

Stocker à -20°C. Stable pendant un an après l'expédition.

Tampon de stockage:

PBS avec azoture de sodium à 0,02 % et glycérol à 50 % pH 7,3

L'aliquotage n'est pas nécessaire pour le stockage à -20C

\*\*\* Les 20ul contiennent 0,1% de BSA.

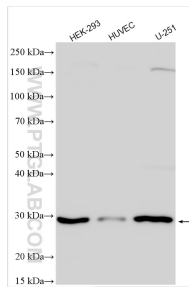
For technical support and original validation data for this product please contact:

T: 1 (888) 4PTGLAB (1-888-478-4522) (toll free in USA), or 1(312) 455-8498 (outside USA)

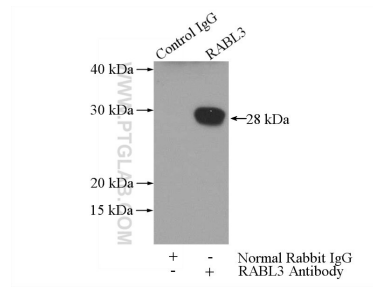
E: proteintech@ptglab.com  
W: ptglab.com

This product is exclusively available under Proteintech Group brand and is not available to purchase from any other manufacturer.

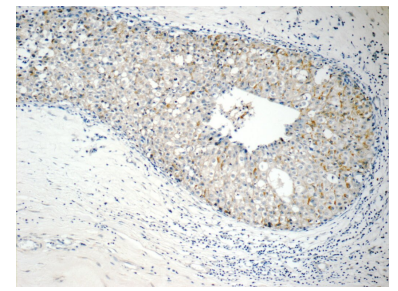
## Données de validation sélectionnées



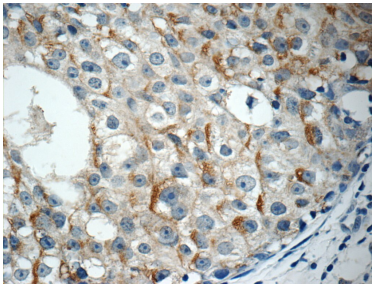
Various lysates were subjected to SDS PAGE followed by western blot with 11916-1-AP (RABL3 antibody) at dilution of 1:2500 incubated at room temperature for 1.5 hours.



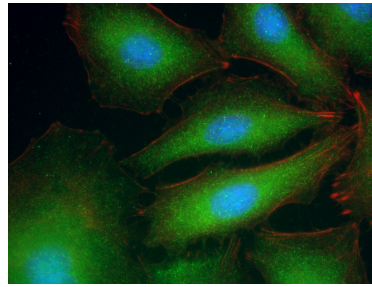
IP Result of anti-RABL3 (IP:11916-1-AP, 3ug; Detection:11916-1-AP 1:300) with mouse lung tissue lysate 4000ug.



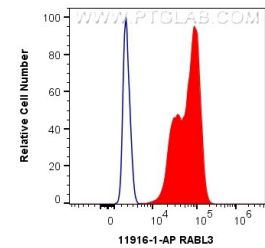
Immunohistochemical analysis of paraffin-embedded human breast cancer tissue slide using 11916-1-AP (RABL3 Antibody) at dilution of 1:50 (under 10x lens).



Immunohistochemical analysis of paraffin-embedded human breast cancer tissue slide using 11916-1-AP (RABL3 Antibody) at dilution of 1:50 (under 40x lens).



Immunofluorescent analysis of (-20°C Ethanol) fixed A549 cells using RABL3 antibody (11916-1-AP) at dilution of 1:400 and CoraLite@488-Conjugated AffiniPure Goat Anti-Rabbit IgG(H+L), CL594-Phalloidin (red).



1X10<sup>6</sup> HEK-293 cells were intracellularly stained with 0.4 ug Anti-Human RABL3 (11916-1-AP) and CoraLite@488-Conjugated AffiniPure Goat Anti-Rabbit IgG(H+L) at dilution 1:1000 (red), or 0.4 ug Isotype Control. Cells were fixed with 4% PFA and permeabilized with Flow Cytometry Perm Buffer (PF00011-C).