

À des fins de recherche uniquement

Anticorps Polyclonal de lapin anti-AP3M2



Numéro de catalogue: 11925-1-AP **Phare**

Informations de base

Numéro de catalogue:
11925-1-AP

Taille:
150ul, Concentration: 260 µg/ml by Nanodrop and 260 µg/ml by Bradford method using BSA as the standard;

Hôte:
Lapin

Isotype:
IgG

Immunogen Catalog Number:
AG2572

Numéro d'acquisition GenBank:
BC056257

Identification du gène (NCBI):
10947

Nom complet:
adaptor-related protein complex 3, mu 2 subunit

MW calculé
418 aa, 47 kDa

MW observés:
47 kDa

Méthode de purification:
Purification par affinité contre l'antigène

Dilutions recommandées:
WB 1:500-1:1000
IP 0.5-4.0 ug for IP and 1:200-1:1000 for WB
IHC 1:20-1:200

Applications

Applications testées:
IHC, IP, WB, ELISA

Spécificité de l'espèce:
Humain, rat, souris

Remarque-IHC: il est suggéré de démasquer l'antigène avec un tampon de TE buffer pH 9.0; (*) À défaut, le démasquage de l'antigène peut être effectué avec un tampon citrate pH 6.0.

Contrôles positifs:

WB : tissu cérébral humain, cellules Hacat (pARNi)

IP : tissu cérébral de souris,

IHC : tissu cérébral de souris,

Informations générales

AP3M2 is a 47-kDa protein that belongs to the adaptor complexes medium subunit family. Adaptor protein (AP) complexes are cytosolic heterotetramers that mediate the sorting of membrane proteins in the secretory and endocytic pathways. AP3M2 is a subunit of the AP-3 complex which is associated with the Golgi region as well as more peripheral structures. AP-3 is implicated in the transport of lysosomal membrane proteins.

Stockage

Stockage:

Stocker à -20°C. Stable pendant un an après l'expédition.

Tampon de stockage:

PBS avec azoture de sodium à 0,02 % et glycérol à 50 % pH 7,3

L'aliquotage n'est pas nécessaire pour le stockage à -20C

*** Les 20ul contiennent 0,1% de BSA.

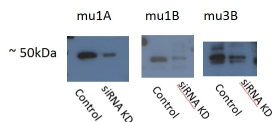
For technical support and original validation data for this product please contact:

T: 1 (888) 4PTGLAB (1-888-478-4522) (toll free in USA), or 1(312) 455-8498 (outside USA)

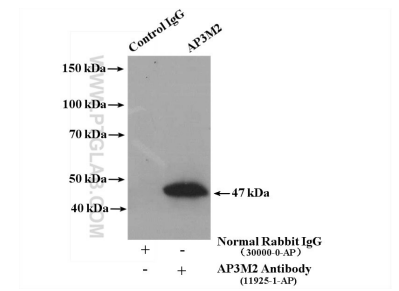
E: proteintech@ptglab.com
W: ptglab.com

This product is exclusively available under Proteintech Group brand and is not available to purchase from any other manufacturer.

Données de validation sélectionnées



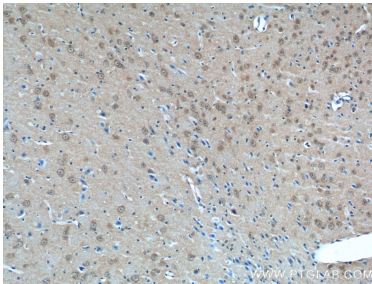
AP1M1 is mu1A: 12112-1-AP,
 AP1M2 is mu1B: 10618-1-AP,
 AP3M2 is mu3B: 11925-1-AP,
 acceptable bands ~50 kDa showing
 some degree of siRNA
 knockdown



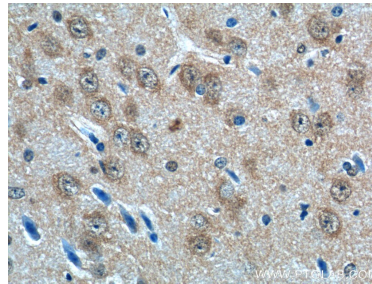
WB result of AP3M2 antibody (11925-1-AP; 1:500) with siRNA cell lysate.

human brain tissue were subjected to SDS PAGE followed by western blot with 11925-1-AP (AP3M2 antibody) at dilution of 1:500 incubated at room temperature for 1.5 hours.

IP result of anti-AP3M2 (IP:11925-1-AP, 4ug; Detection:11925-1-AP 1:300) with mouse brain tissue lysate 3200 ug.



Immunohistochemical analysis of paraffin-embedded mouse brain tissue slide using 11925-1-AP (AP3M2 Antibody) at dilution of 1:50 (under 10x lens).



Immunohistochemical analysis of paraffin-embedded mouse brain tissue slide using 11925-1-AP (AP3M2 Antibody) at dilution of 1:50 (under 40x lens).