

À des fins de recherche uniquement

Anticorps Polyclonal de lapin anti-Kininogen 1



Numéro de catalogue: 11926-1-AP

6 Publications

Informations de base

Numéro de catalogue:
11926-1-AP

Taille:
150ul, Concentration: 450 µg/ml by Nanodrop and 267 µg/ml by Bradford method using BSA as the standard;

Hôte:
Lapin

Isotype:
IgG

Immunogen Catalog Number:
AG2574

Numéro d'acquisition GenBank:
BC060039

Identification du gène (NCBI):
3827

Nom complet:
kininogen 1

MW calculé
644 aa, 72 kDa

MW observés:
60 kDa, 47 kDa

Méthode de purification:
Purification par affinité contre l'antigène

Dilutions recommandées:
WB 1:500-1:1000
IHC 1:50-1:500
IF 1:10-1:100

Applications

Applications testées:
IF, IHC, WB, ELISA

Demandes citées:
CoIP, IF, WB

Spécificité de l'espèce:
Humain

Espèces citées:
Humain, rat, souris

Remarque-IHC: il est suggéré de démasquer l'antigène avec un tampon de TE buffer pH 9,0; (*) A défaut, 'le démasquage de l'antigène peut être 'effectué avec un tampon citrate pH 6,0.

Contrôles positifs:

WB : cellules HeLa, cellules A2780, cellules COLO 320, cellules MCF-7

IHC : tissu rénal humain, tissu de cancer de l'endomètre humain

IF : cellules HepG2,

Informations générales

Kininogens are inhibitors of thiol proteases. Kininogen 1 plays important role in Kinin-kallikrein system. This gene is translated into High-molecular weight kininogen (HMWK) and low-molecular weight kininogen (LMWK) after alternative splicing. HMWK is produced by the liver together with prekallikrein. It acts mainly as a cofactor on coagulation and inflammation, and has no intrinsic catalytic activity. LMWK is produced locally by numerous tissues, and secreted together with tissue kallikrein. 11926-1-AP was generated against N-terminal 300 aa of HMW kininogen. It can bind both HMW and LMW kininogen.

Publications notables

| Autrice | Pubmed ID | Journal | Application |
|-----------|-----------|----------------------|-------------|
| Bo Ma | 30235220 | PLoS One | WB |
| Shen Liu | 33144554 | Med Sci Monit | WB |
| Qin Zheng | 29734187 | Cell Physiol Biochem | WB |

Stockage

Stockage:

Stocker à -20°C. Stable pendant un an après l'expédition.

Tampon de stockage:

PBS avec azoture de sodium à 0,02 % et glycérol à 50 % pH 7,3

L'aliquotage n'est pas nécessaire pour le stockage à -20C

*** Les 20ul contiennent 0,1% de BSA.

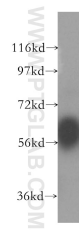
For technical support and original validation data for this product please contact:

T: 1 (888) 4PTGLAB (1-888-478-4522) (toll free in USA), or 1(312) 455-8498 (outside USA)

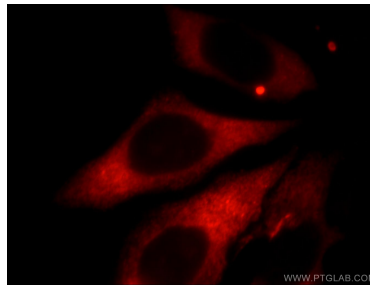
E: proteintech@ptglab.com
W: ptglab.com

This product is exclusively available under Proteintech Group brand and is not available to purchase from any other manufacturer.

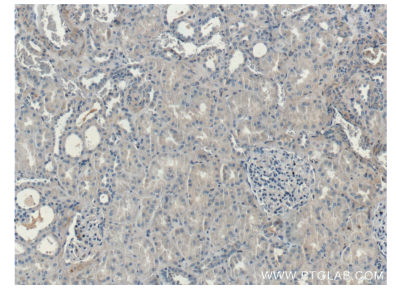
Données de validation sélectionnées



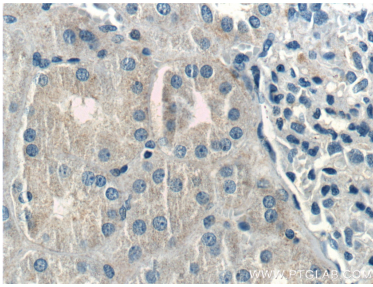
HeLa cells were subjected to SDS PAGE followed by western blot with 11926-1-AP (Kininogen 1 antibody) at dilution of 1:300 incubated at room temperature for 1.5 hours.



Immunofluorescent analysis of HepG2 cells, using KNG1 antibody 11926-1-AP at 1:25 dilution and Rhodamine-labeled goat anti-rabbit IgG (red).



Immunohistochemical analysis of paraffin-embedded human kidney tissue slide using 11926-1-AP (Kininogen 1 antibody at dilution of 1:200 (under 10x lens).



Immunohistochemical analysis of paraffin-embedded human kidney tissue slide using 11926-1-AP (Kininogen 1 antibody at dilution of 1:200 (under 40x lens).