

À des fins de recherche uniquement

Anticorps Polyclonal de lapin anti- ERGIC2



Numéro de catalogue: 11927-1-AP

Phare

1 Publications

Informations de base

Numéro de catalogue:
11927-1-AP

Taille:
150ul, Concentration: 170 µg/ml by
Nanodrop and 133 µg/ml by Bradford
method using BSA as the standard;

Hôte:
Lapin

Isotype:
IgG

Immunogen Catalog Number:
AG2603

Numéro d'acquisition GenBank:
BC000887

Identification du gène (NCBI):
51290

Nom complet:
ERGIC and golgi 2

MW calculé
377 aa, 43 kDa

MW observés:
45-50 kDa

Méthode de purification:
Purification par affinité contre
l'antigène

Dilutions recommandées:
WB 1:1000-1:6000
IP 0.5-4.0 ug for IP and 1:500-1:2000
for WB
IHC 1:20-1:200
IF 1:50-1:500

Applications

Applications testées:
IF, IHC, IP, WB, ELISA

Spécificité de l'espèce:
Humain

**Remarque-IHC: il est suggéré de démasquer
l'antigène avec un tampon de TE buffer pH
9.0; (*) À défaut, le démasquage de
l'antigène peut être effectué avec un
tampon citrate pH 6,0.**

Contrôles positifs:

WB : cellules HeLa, cellules HepG2, cellules MCF-7

IP : cellules HepG2,

IHC : tissu de cancer de la prostate humain,

IF : cellules HepG2,

Informations générales

ERGIC2, also named as Endoplasmic reticulum-Golgi intermediate compartment protein 2 or PTX1, is a 377 amino acid protein, which belongs to the ERGIC family. ERGIC2 is ubiquitously expressed in many tissues. ERGIC2 localizes in the endoplasmic reticulum-Golgi intermediate compartment membrane and may play a role in transport between endoplasmic reticulum and Golgi. ERGIC2 is involved in protein transportation, and participated in the elongation factor 1 alpha regulated mechanisms.

Publications notables

Autrice	Pubmed ID	Journal	Application
Kwok Simon C MSC	24303950	DNA Cell Biol	

Stockage

Stockage:

Stocker à -20°C. Stable pendant un an après l'expédition.

Tampon de stockage:

PBS avec azoture de sodium à 0,02 % et glycérol à 50 % pH 7,3

L'aliquotage n'est pas nécessaire pour le stockage à -20C

*** Les 20ul contiennent 0,1% de BSA.

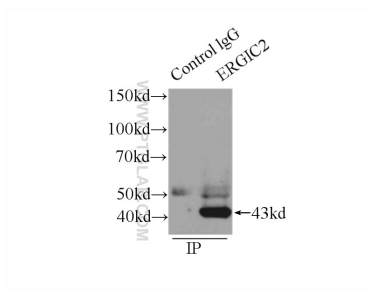
For technical support and original validation data for this product please contact:

T: 1 (888) 4PTGLAB (1-888-478-4522) (toll free
in USA), or 1(312) 455-8498 (outside USA)

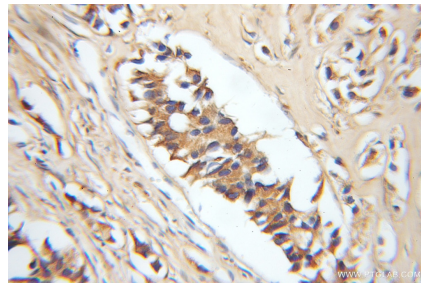
E: proteintech@ptglab.com
W: ptglab.com

This product is exclusively available under Proteintech Group brand and is not available to purchase from any other manufacturer.

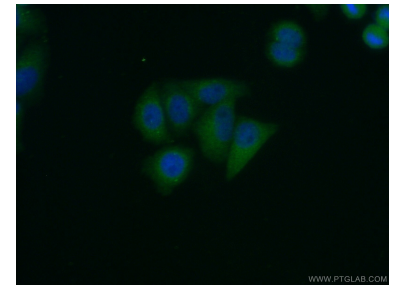
Données de validation sélectionnées



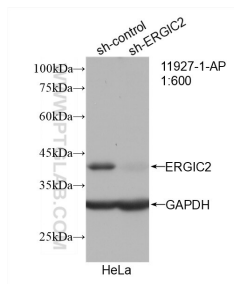
IP Result of anti-ERGIC2 (IP:11927-1-AP, 4ug; Detection:11927-1-AP 1:1000) with HepG2 cells lysate 2900ug.



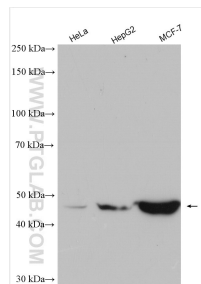
Immunohistochemical analysis of paraffin-embedded human prostate cancer using 11927-1-AP (ERGIC2 antibody) at dilution of 1:50 (under 10x lens).



Immunofluorescent analysis of (10% Formaldehyde) fixed HepG2 cells using 11927-1-AP (ERGIC2 antibody) at dilution of 1:50 and Alexa Fluor 488-conjugated AffiniPure Goat Anti-Rabbit IgG(H+L).



WB result of ERGIC2 antibody (11927-1-AP; 1:600; incubated at room temperature for 1.5 hours) with sh-Control and sh-ERGIC2 transfected HeLa cells.



Various lysates were subjected to SDS PAGE followed by western blot with 11927-1-AP (ERGIC2 antibody) at dilution of 1:3000 incubated at room temperature for 1.5 hours.