

À des fins de recherche uniquement

# Anticorps Polyclonal de lapin anti-PSMA4



Numéro de catalogue: 11943-2-AP

4 Publications

## Informations de base

Numéro de catalogue:  
11943-2-AP

Taille:  
150ul, Concentration: 650 µg/ml by Nanodrop and 333 µg/ml by Bradford method using BSA as the standard;

Hôte:  
Lapin

Isotype:  
IgG

Immunogen Catalog Number:  
AG2542

Numéro d'acquisition GenBank:  
BC056249

Identification du gène (NCBI):  
5685

Nom complet:  
proteasome (prosome, macropain) subunit, alpha type, 4

MW calculé:  
237 aa, 27 kDa

MW observés:  
29 kDa

Méthode de purification:  
Purification par affinité contre l'antigène

Dilutions recommandées:  
WB 1:1000-1:4000  
IP 0.5-4.0 ug for IP and 1:500-1:1000 for WB  
IHC 1:50-1:500  
IF 1:50-1:500

## Applications

Applications testées:  
IF, IHC, IP, WB, ELISA

Demandes citées:  
IHC, WB

Spécificité de l'espèce:  
Humain, rat, souris

Espèces citées:  
Humain, souris

**Remarque-IHC: il est suggéré de démasquer l'antigène avec un tampon de TE buffer pH 9,0; (\*) A défaut, le démasquage de l'antigène peut être effectué avec un tampon citrate pH 6,0.**

Contrôles positifs:

WB : cellules BxPC-3, cellules K-562, cellules U-937, tissu rénal de souris, tissu splénique de souris

IP : cellules BxPC-3,

IHC : tissu de cancer du pancréas humain, tissu hépatique de souris

IF : cellules HeLa,

## Informations générales

### Publications notables

Autrice	Pubmed ID	Journal	Application
Monica Benvenuto	34561494	Sci Rep	IHC
Jayashree Chadchankar	31703099	PLoS One	WB
Hiroyuki Kondo	31915251	J Biol Chem	WB,IHC

## Stockage

Stockage:

Stocker à -20°C. Stable pendant un an après l'expédition.

Tampon de stockage:

PBS avec azoture de sodium à 0,02 % et glycérol à 50 % pH 7,3

L'aliquotage n'est pas nécessaire pour le stockage à -20C

\*\*\* Les 20ul contiennent 0,1% de BSA.

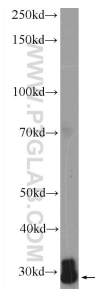
For technical support and original validation data for this product please contact:

T: 1 (888) 4PTGLAB (1-888-478-4522) (toll free in USA), or 1(312) 455-8498 (outside USA)

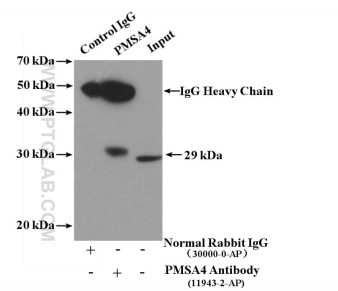
E: proteintech@ptglab.com  
W: ptglab.com

This product is exclusively available under Proteintech Group brand and is not available to purchase from any other manufacturer.

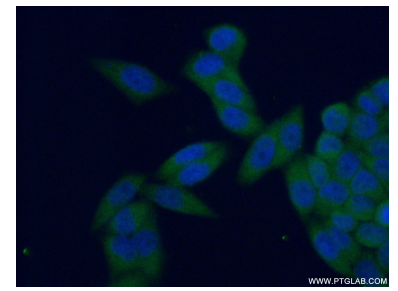
## Données de validation sélectionnées



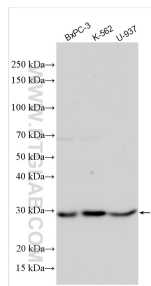
K-562 cells were subjected to SDS PAGE followed by western blot with 11943-2-AP (PSMA4 Antibody) at dilution of 1:1000 incubated at 4 degree celsius over night.



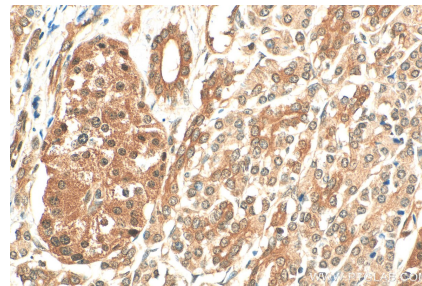
IP Result of anti-PSMA4 (IP:11943-2-AP, 4ug; Detection:11943-2-AP 1:500) with BxPC-3 cells lysate 2800ug.



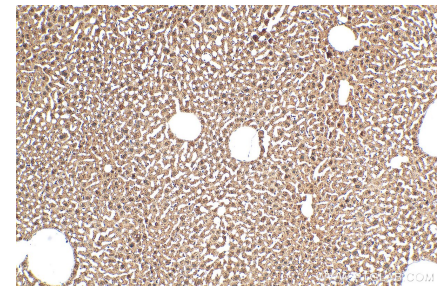
Immunofluorescent analysis of (4% PFA) fixed HeLa cells using 11943-2-AP (PSMA4 antibody) at dilution of 1:50 and Alexa Fluor 488-conjugated AffiniPure Goat Anti-Rabbit IgG(H+L).



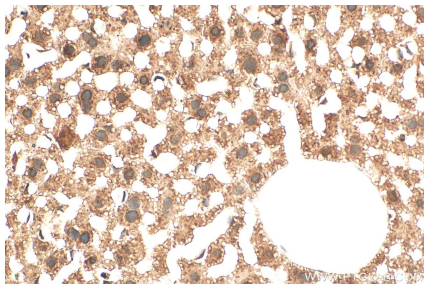
Various lysates were subjected to SDS PAGE followed by western blot with 11943-2-AP (PSMA4 antibody) at dilution of 1:2000 incubated at room temperature for 1.5 hours.



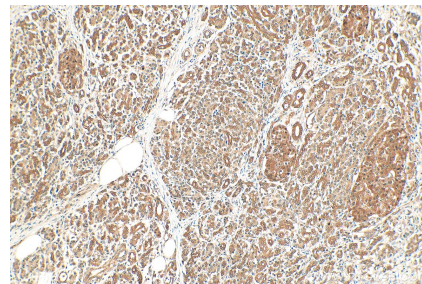
Immunohistochemical analysis of paraffin-embedded human pancreas cancer tissue slide using 11943-2-AP (PSMA4 antibody) at dilution of 1:200 (under 40x lens). Heat mediated antigen retrieval with Tris-EDTA buffer (pH 9.0).



Immunohistochemical analysis of paraffin-embedded mouse liver tissue slide using 11943-2-AP (PSMA4 antibody) at dilution of 1:200 (under 10x lens). Heat mediated antigen retrieval with Tris-EDTA buffer (pH 9.0).



Immunohistochemical analysis of paraffin-embedded mouse liver tissue slide using 11943-2-AP (PSMA4 antibody) at dilution of 1:200 (under 40x lens). Heat mediated antigen retrieval with Tris-EDTA buffer (pH 9.0).



Immunohistochemical analysis of paraffin-embedded human pancreas cancer tissue slide using 11943-2-AP (PSMA4 antibody) at dilution of 1:200 (under 10x lens). Heat mediated antigen retrieval with Tris-EDTA buffer (pH 9.0).