

À des fins de recherche uniquement

# Anticorps Polyclonal de lapin anti-STEAP4



Numéro de catalogue: 11944-1-AP

Phare

31 Publications

## Informations de base

Numéro de catalogue:

11944-1-AP

Taille:

150ul, Concentration: 600 µg/ml by Nanodrop;

Hôte:

Lapin

Isotype:

IgG

Immunogen Catalog Number:

AG2545

Numéro d'acquisition GenBank:

BCO20600

Identification du gène (NCBI):

79689

Nom complet:

STEAP family member 4

MW calculé

52 kDa

MW observés:

52 kDa

Méthode de purification:

Purification par affinité contre l'antigène

Dilutions recommandées:

WB 1:500-1:1000

IP 0.5-4.0 ug for IP and 1:500-1:2000 for WB

IHC 1:50-1:500

## Applications

Applications testées:

IHC, IP, WB, ELISA

Demandes citées:

IF, IHC, WB

Spécificité de l'espèce:

Humain, rat, souris

Espèces citées:

Humain, rat, souris

Contrôles positifs:

WB : cellules A549, cellules 3T3-L1, cellules RAW 264.7, tissu cérébral humain, tissu hépatique de rat, tissu hépatique humain

IP : cellules 3T3-L1,

IHC : tissu de cancer de la prostate humain,

**Remarque-IHC: il est suggéré de démasquer l'antigène avec un tampon de TE buffer pH 9,0; (\*) À défaut, le démasquage de l'antigène peut être effectué avec un tampon citrate pH 6,0.**

## Informations générales

STEAP4 (also called STAMP2), is a member of the STEAP family. Structurally, It is a 459 amino acid protein characterized by a molecular topology of six transmembrane domains. The cytoplasmic N-terminal domain of STEAP4 shows structural similarity with bacterial and archaeal FNO oxidoreductase and STEAP4 exhibits a strong iron reductase activity. Studies in mice and human suggest that STEAP4 maybe involved in adipocyte development and metabolism, and may contribute to the normal biology of the prostate cell, as well as prostate cancer progression.

## Publications notables

Autrice	Pubmed ID	Journal	Application
Ji-Eun Park	33110955	Dev Reprod	WB,IHC
Ji-Eun Park	31660449	Dev Reprod	WB
Fang-Qiang Song	34583195	Biochem Biophys Res Commun	IHC

## Stockage

Stockage:

Stocker à -20°C. Stable pendant un an après l'expédition.

Tampon de stockage:

PBS avec azoture de sodium à 0,02 % et glycérol à 50 % pH 7,3

L'aliquotage n'est pas nécessaire pour le stockage à -20C

\*\*\* Les 20ul contiennent 0,1% de BSA.

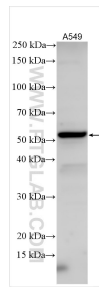
For technical support and original validation data for this product please contact:

T: 1 (888) 4PTGLAB (1-888-478-4522) (toll free in USA), or 1(312) 455-8498 (outside USA)

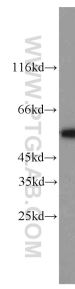
E: proteintech@ptglab.com  
W: ptglab.com

This product is exclusively available under Proteintech Group brand and is not available to purchase from any other manufacturer.

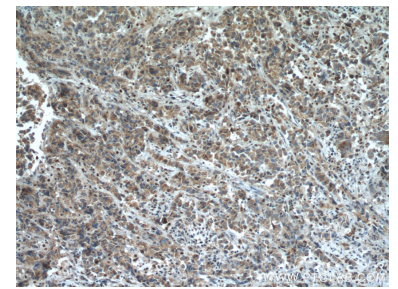
## Données de validation sélectionnées



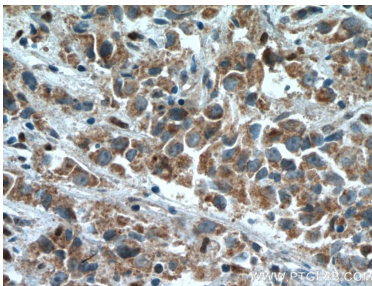
Various lysates were subjected to SDS PAGE followed by western blot with 11944-1-AP (STEAP4 antibody) at dilution of 1:500 incubated at room temperature for 1.5 hours.



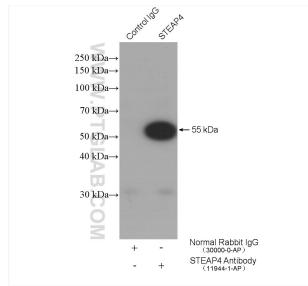
3T3-L1 cells were subjected to SDS PAGE followed by western blot with 11944-1-AP (STEAP4 antibody) at dilution of 1:1000 incubated at room temperature for 1.5 hours.



Immunohistochemical analysis of paraffin-embedded human prostate cancer tissue slide using 11944-1-AP (STEAP4 antibody) at dilution of 1:200 (under 10x lens. Heat mediated antigen retrieval with Tris-EDTA buffer (pH 9.0).



Immunohistochemical analysis of paraffin-embedded human prostate cancer tissue slide using 11944-1-AP (STEAP4 antibody) at dilution of 1:200 (under 40x lens. Heat mediated antigen retrieval with Tris-EDTA buffer (pH 9.0).



IP result of anti-STEAP4 (IP:11944-1-AP, 4ug; Detection:11944-1-AP 1:1000) with 3T3-L1 cells lysate 1200 ug.