

À des fins de recherche uniquement

# Anticorps Polyclonal de lapin anti-ATF1



Numéro de catalogue: 11946-1-AP

Phare

8 Publications

## Informations de base

Numéro de catalogue:  
11946-1-AP

Taille:  
150ul, Concentration: 400 µg/ml by Nanodrop and 227 µg/ml by Bradford method using BSA as the standard;

Hôte:  
Lapin

Isotype:  
IgG

Immunogen Catalog Number:  
AG2548

Numéro d'acquisition GenBank:  
BC029619

Identification du gène (NCBI):  
466

Nom complet:  
activating transcription factor 1

MW calculé  
271 aa, 29 kDa

MW observés:  
35 kDa

Méthode de purification:  
Purification par affinité contre l'antigène

Dilutions recommandées:  
WB 1:500-1:1000  
IP 0.5-4.0 ug for IP and 1:500-1:1000 for WB  
IF 1:50-1:500

## Applications

Applications testées:  
IF, IP, WB, ELISA

Demandes citées:  
IHC, WB

Spécificité de l'espèce:  
Humain

Espèces citées:  
Humain, souris

Contrôles positifs:

WB : cellules HeLa, cellules A431, tissu cérébral humain

IP : cellules HeLa,

IF : cellules HeLa,

## Informations générales

TFs play a vital role in maintaining cell homeostasis by combining DNA regulatory sequences to regulate gene transcription rates. Activating transcription factor 1 (ATF1) is a member of the ATF/CREB family of transcription factors (TFs), specifically interacting with the consensus ATF/CRE site 'TGACGTCA'(PMID: 28032861). ATF1 transcriptionally regulates the expressions of target genes to mediate various cellular processes, and ATF1 effects the progression of tumors (including lung cancer, colorectal cancer, and nasopharyngeal carcinoma).

## Publications notables

Autrice	Pubmed ID	Journal	Application
Salma Aktar	36154610	J Virol	WB
Yanjie Tan	31614673	Cells	WB
Yanni Ge	34853720	Mol Ther Nucleic Acids	WB

## Stockage

Stockage:

Stocker à -20°C. Stable pendant un an après l'expédition.

Tampon de stockage:

PBS avec azoture de sodium à 0,02 % et glycérol à 50 % pH 7,3

L'aliquotage n'est pas nécessaire pour le stockage à -20C

\*\*\* Les 20ul contiennent 0,1% de BSA.

For technical support and original validation data for this product please contact:

T: 1 (888) 4PTGLAB (1-888-478-4522) (toll free in USA), or 1(312) 455-8498 (outside USA)

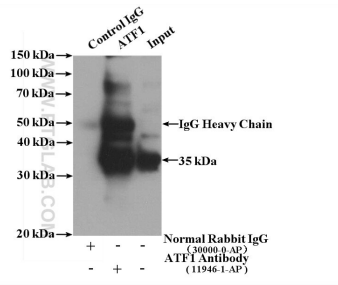
E: [proteintech@ptglab.com](mailto:proteintech@ptglab.com)  
W: [ptglab.com](http://ptglab.com)

This product is exclusively available under Proteintech Group brand and is not available to purchase from any other manufacturer.

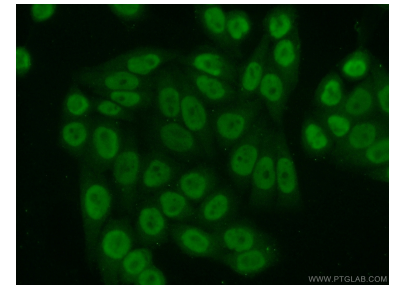
## Données de validation sélectionnées



HeLa cells were subjected to SDS PAGE followed by western blot with 11946-1-AP (ATF1 antibody) at dilution of 1:500 incubated at room temperature for 1.5 hours.



IP Result of anti-ATF1 (IP:11946-1-AP, 4ug; Detection:11946-1-AP 1:500) with HeLa cells lysate 3200ug.



Immunofluorescent analysis of (10% Formaldehyde) fixed HeLa cells using 11946-1-AP (ATF1 antibody) at dilution of 1:50 and Alexa Fluor 488-conjugated AffiniPure Goat Anti-Rabbit IgG(H+L).