

À des fins de recherche uniquement

Anticorps Polyclonal de lapin anti-SUB1



Numéro de catalogue: 11956-1-AP **Phare**

Informations de base

Numéro de catalogue: 11956-1-AP	Numéro d'acquisition GenBank: BC022339	Méthode de purification: Purification par affinité contre l'antigène
Taille: 150ul , Concentration: 1000 µg/ml by Nanodrop and 580 µg/ml by Bradford method using BSA as the standard;	Identification du gène (NCBI): 10923	Dilutions recommandées: WB 1:500-1:2000 IHC 1:50-1:500 IF 1:50-1:500
Hôte: Lapin	Nom complet: SUB1 homolog (S. cerevisiae)	
Isotype: IgG	MW calculé: 14 kDa	
Immunogen Catalog Number: AG2559	MW observés: 18-23 kDa	

Applications

Applications testées: IF, IHC, WB, ELISA	Contrôles positifs:
Spécificité de l'espèce: Humain, rat, souris	WB : tissu hépatique de rat, cellules C2C12, cellules HeLa
Remarque-IHC: il est suggéré de démasquer l'antigène avec un tampon de TE buffer pH 9.0; (*) À défaut, 'le démasquage de l'antigène peut être 'effectué avec un tampon citrate pH 6,0.	IHC : tissu de gliome humain,
	IF : cellules HeLa,

Informations générales

SUB1 gene encodes activated RNA polymerase II transcriptional coactivator p15, also termed as positive cofactor 4 (PC4) or p14. SUB1 is a sort of general coactivator that functions in assembling and stabilization of transcription complex. It has DNA binding activity and is localized in the nucleus, multiple modification sites of phosphorylation or acetylation may turn it appear slightly shifted molecular weight. Catalog#11956-1-AP is a rabbit polyclonal antibody raised against full-length human SUB1. This antibody recognize 14-16 kDa (P14 or P15), 20 kDa (phospho form) and 30 kDa (Dimer form).

Stockage

Stockage:
Stocker à -20°C. Stable pendant un an après l'expédition.
Tampon de stockage:
PBS avec azoture de sodium à 0,02 % et glycérol à 50 % pH 7,3
L'aliquotage n'est pas nécessaire pour le stockage à -20C

*** Les 20ul contiennent 0,1% de BSA.

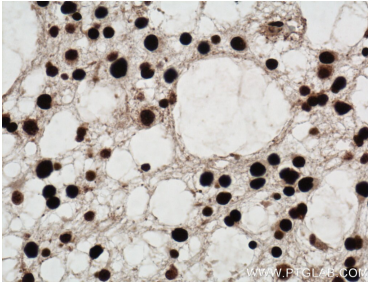
For technical support and original validation data for this product please contact:

T: 1 (888) 4PTGLAB (1-888-478-4522) (toll free in USA), or 1(312) 455-8498 (outside USA)

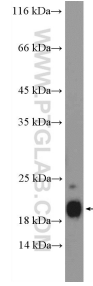
E: proteintech@ptglab.com
W: ptglab.com

This product is exclusively available under Proteintech Group brand and is not available to purchase from any other manufacturer.

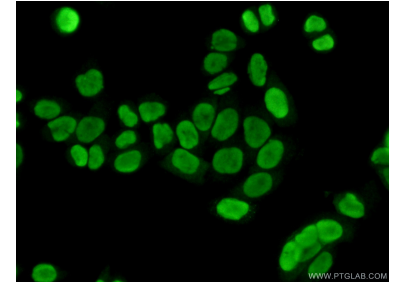
Données de validation sélectionnées



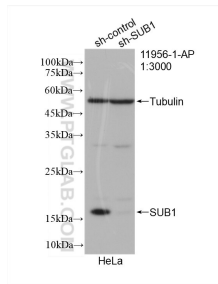
Immunohistochemical analysis of paraffin-embedded human gliomas tissue slide using 11956-1-AP (SUB1 antibody) at dilution of 1:100 (under 40x lens. Heat mediated antigen retrieval with Tris-EDTA buffer (pH 9.0).



rat liver tissue were subjected to SDS PAGE followed by western blot with 11956-1-AP (SUB1 Antibody) at dilution of 1:1000 incubated at room temperature for 1.5 hours.



Immunofluorescent analysis of (10% Formaldehyde) fixed HeLa cells using 11956-1-AP (SUB1 antibody) at dilution of 1:50 and Alexa Fluor 488-conjugated AffiniPure Goat Anti-Rabbit IgG(H+L).



WB result of SUB1 antibody (11956-1-AP; 1:3000; incubated at room temperature for 1.5 hours) with sh-Control and sh-SUB1 transfected HeLa cells.