

À des fins de recherche uniquement

Anticorps Polyclonal de lapin anti-NPM3



Numéro de catalogue: 11960-1-AP

Informations de base

Numéro de catalogue:
11960-1-AP

Taille:
150ul, Concentration: 700 µg/ml by
Nanodrop and 287 µg/ml by Bradford
method using BSA as the standard;

Hôte:
Lapin

Isotype:
IgG

Immunogen Catalog Number:
AG2564

Numéro d'acquisition GenBank:
BC054868

Identification du gène (NCBI):
10360

Nom complet:
nucleophosmin/nucleoplasmin, 3

MW calculé
178 aa, 19 kDa

MW observés:
25 kDa

Méthode de purification:
Purification par affinité contre
l'antigène

Dilutions recommandées:
WB 1:1000-1:8000
IP 0.5-4.0 ug for IP and 1:500-1:1000
for WB
IHC 1:50-1:500
IF 1:20-1:200

Applications

Applications testées:
IF, IHC, IP, WB, ELISA

Spécificité de l'espèce:
Humain, rat, souris

**Remarque-IHC: il est suggéré de démasquer
l'antigène avec un tampon de TE buffer pH
9.0; (*) À défaut, 'le démasquage de
l'antigène peut être 'effectué avec un
tampon citrate pH 6,0.**

Contrôles positifs:

WB : cellules HeLa,

IP : cellules HeLa,

IHC : tissu de lymphome humain,

IF : cellules HeLa,

Informations générales

NPM3, a member of the nucleophosmin/ nucleoplasmin family, lacks intrinsic histone chaperone activity, inhibits histone assembly activity of NPM1 in vitro, and dramatically enhances transcription in a cellular system (PMID: 20073534). Human NPM3 is an abundant and widely expressed protein with primarily nuclear localization. The NPM3 protein migrated in SDS-PAGE gels as a doublet with apparent molecular masses of 25 and 27 kDa, which are larger than the 20.5 kDa mass predicted by the deduced amino acid sequence including the HA tag (PMID: 11722795). The NPM3 antibody can detect two bands with MW between 20-27 kDa.

Stockage

Stockage:

Stocker à -20°C. Stable pendant un an après l'expédition.

Tampon de stockage:

PBS avec azoture de sodium à 0,02 % et glycérol à 50 % pH 7,3

L'aliquotage n'est pas nécessaire pour le stockage à -20C

*** Les 20ul contiennent 0,1% de BSA.

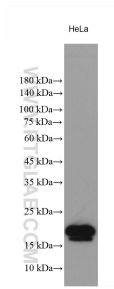
For technical support and original validation data for this product please contact:

T: 1 (888) 4PTGLAB (1-888-478-4522) (toll free
in USA), or 1(312) 455-8498 (outside USA)

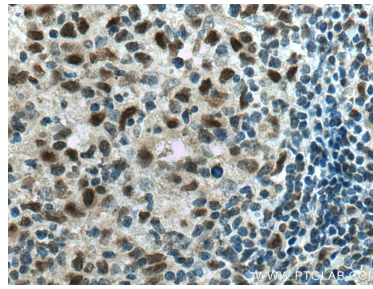
E: proteintech@ptglab.com
W: ptglab.com

This product is exclusively available under Proteintech Group brand and is not available to purchase from any other manufacturer.

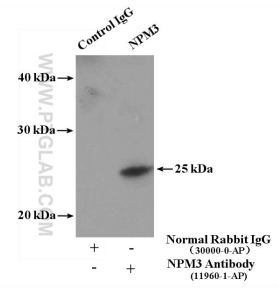
Données de validation sélectionnées



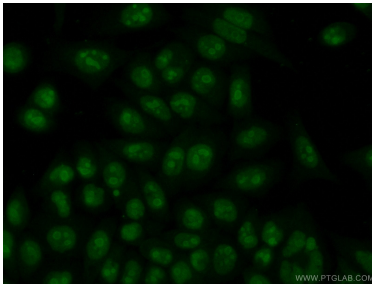
HeLa lysates were subjected to SDS PAGE followed by western blot with 11960-1-AP (NPM3 antibody) at dilution of 1:4000 incubated at room temperature for 1.5 hours.



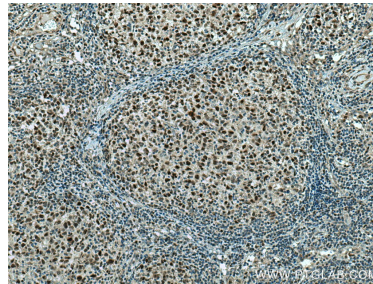
Immunohistochemical analysis of paraffin-embedded human lymphoma tissue slide using 11960-1-AP (NPM3 antibody) at dilution of 1:200 (under 40x lens). Heat mediated antigen retrieval with Tris-EDTA buffer (pH 9.0).



IP Result of anti-NPM3 (IP:11960-1-AP, 4ug; Detection:11960-1-AP 1:500) with HeLa cells lysate 3400ug.



Immunofluorescent analysis of (10% Formaldehyde) fixed HeLa cells using 11960-1-AP (NPM3 antibody) at dilution of 1:50 and Alexa Fluor 488-conjugated AffiniPure Goat Anti-Rabbit IgG(H+L).



Immunohistochemical analysis of paraffin-embedded human lymphoma tissue slide using 11960-1-AP (NPM3 antibody) at dilution of 1:200 (under 10x lens). Heat mediated antigen retrieval with Tris-EDTA buffer (pH 9.0).