

À des fins de recherche uniquement

Anticorps Polyclonal de lapin anti-EMG1



Numéro de catalogue: 11965-1-AP

Phare

3 Publications

Informations de base

Numéro de catalogue:
11965-1-AP

Taille:
150ul, Concentration: 450 µg/ml by Nanodrop and 333 µg/ml by Bradford method using BSA as the standard;

Hôte:
Lapin

Isotype:
IgG

Immunogen Catalog Number:
AG2575

Numéro d'acquisition GenBank:
BC055314

Identification du gène (NCBI):
10436

Nom complet:
EMG1 nucleolar protein homolog (S. cerevisiae)

MW calculé:
244 aa, 27 kDa

MW observés:
27 kDa

Méthode de purification:
Purification par affinité contre l'antigène

Dilutions recommandées:
WB 1:500-1:2400
IP 0.5-4.0 ug for IP and 1:200-1:1000 for WB
IF 1:20-1:200

Applications

Applications testées:
IF, IP, WB, ELISA

Demandes citées:
IF, WB

Spécificité de l'espèce:
Humain, rat, souris

Espèces citées:
Chèvre, souris

Contrôles positifs:

WB : cellules HeLa, cellules HEK-293, cellules PC-3

IP : cellules HeLa,

IF : cellules HeLa,

Informations générales

EMG1, also named as NEP1, is a highly conserved protein initially identified as "Essential for Mitotic Growth" in yeast. EMG1 is required for maturation of the 18S rRNA and biogenesis of the 40S ribosomal subunit. EMG1 is the methyltransferase in the biosynthesis of m1acp3-Psi in eukaryotic 18S rRNAs. It has an essential role in 40S ribosomal subunit biogenesis independent on its methyltransferase activity. A mutation in human EMG1 gene causes Bowen-Conradi syndrome (BCS), an autosomal recessive disorder characterized by severely impaired prenatal and postnatal growth, profound psychomotor retardation, and death in early childhood.

Publications notables

Autrice	Pubmed ID	Journal	Application
Zhipeng Sun	36499219	Int J Mol Sci	WB
Joy Armistead	25708872	Biochim Biophys Acta	IF
Lukasz Slomnicki	27053602	Mol Cell Proteomics	

Stockage

Stockage:

Stocker à -20°C. Stable pendant un an après l'expédition.

Tampon de stockage:

PBS avec azoture de sodium à 0,02 % et glycérol à 50 % pH 7,3

L'aliquotage n'est pas nécessaire pour le stockage à -20C

*** Les 20ul contiennent 0,1% de BSA.

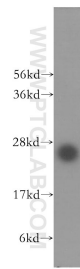
For technical support and original validation data for this product please contact:

T: 1 (888) 4PTGLAB (1-888-478-4522) (toll free in USA), or 1(312) 455-8498 (outside USA)

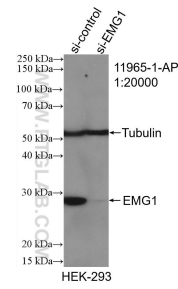
E: proteintech@ptglab.com
W: ptglab.com

This product is exclusively available under Proteintech Group brand and is not available to purchase from any other manufacturer.

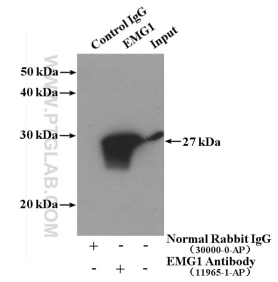
Données de validation sélectionnées



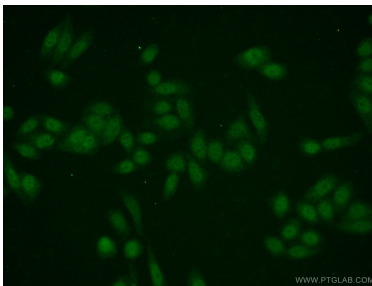
HeLa cells were subjected to SDS PAGE followed by western blot with 11965-1-AP (EMG1 antibody) at dilution of 1:400 incubated at room temperature for 1.5 hours.



WB result of EMG1 antibody (11965-1-AP; 1:20000; incubated at room temperature for 1.5 hours) with sh-Control and sh-EMG1 transfected HEK-293 cells.



IP Result of anti-EMG1 (IP:11965-1-AP, 4ug; Detection:11965-1-AP 1:400) with HeLa cells lysate 1080ug.



Immunofluorescent analysis of HeLa cells using 11965-1-AP (EMG1 antibody) at dilution of 1:50 and Alexa Fluor 488-conjugated AffiniPure Goat Anti-Rabbit IgG(H+L).