

À des fins de recherche uniquement

Anticorps Polyclonal de lapin anti-TIPIN



Numéro de catalogue: 11972-2-AP

1 Publications

Informations de base

Numéro de catalogue: 11972-2-AP	Numéro d'acquisition GenBank: BC000870	Méthode de purification: Purification par affinité contre l'antigène
Taille: 150ul , Concentration: 650 µg/ml by Nanodrop and 367 µg/ml by Bradford method using BSA as the standard;	Identification du gène (NCBI): 54962	Dilutions recommandées: WB 1:500-1:2000
Hôte: Lapin	Nom complet: TIMELESS interacting protein	
Isotype: IgG	MW calculé 301 aa, 34 kDa	
Immunogen Catalog Number: AG2595	MW observés: 48 kDa	

Applications

Applications testées: WB, ELISA	Contrôles positifs: WB : tissu cérébral de souris, tissu cérébral de rat
Demands citées: IHC	
Spécificité de l'espèce: Humain, rat, souris	
Espèces citées: Humain	

Informations générales

TIPIN, also named as TIMELESS-interacting protein, is a 301 amino acid protein, which belongs to the CSM3 family. TIPIN Plays an important role in the control of DNA replication and the maintenance of replication fork stability. TIPIN forms a complex with TIMELESS and this complex regulates DNA replication processes under both normal and stress conditions, stabilizes replication forks and influences both CHEK1 phosphorylation and the intra-S phase checkpoint in response to genotoxic stress. The calculated molecular weight of TIPIN is 34 kDa, but the result of WB is 55-60 kDa, which is similar to the result of publication.(PMID: 24830473)

Publications notables

Autrice	Pubmed ID	Journal	Application
Hui Chen	35082931	Dis Markers	IHC

Stockage

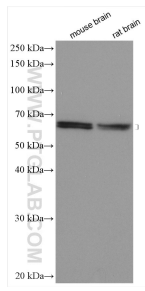
Stockage:
Stocker à -20°C. Stable pendant un an après l'expédition.
Tampon de stockage:
PBS avec azoture de sodium à 0,02 % et glycérol à 50 % pH 7,3
L'aliquotage n'est pas nécessaire pour le stockage à -20C

*** Les 20ul contiennent 0,1% de BSA.

For technical support and original validation data for this product please contact:
T: 1 (888) 4PTGLAB (1-888-478-4522) (toll free in USA), or 1(312) 455-8498 (outside USA)
E: proteintech@ptglab.com
W: ptglab.com

This product is exclusively available under Proteintech Group brand and is not available to purchase from any other manufacturer.

Données de validation sélectionnées



Various lysates were subjected to SDS PAGE followed by western blot with 11972-2-AP (TIPIN antibody) at dilution of 1:1000 incubated at room temperature for 1.5 hours.