

À des fins de recherche uniquement

Anticorps Polyclonal de lapin anti-Angiotensinogen



Numéro de catalogue: 11992-1-AP

Phare

20 Publications

Informations de base

Numéro de catalogue:

11992-1-AP

Taille:

150ul, Concentration: 430 µg/ml by Nanodrop;

Hôte:

Lapin

Isotype:

IgG

Immunogen Catalog Number:

AG2632

Numéro d'acquisition GenBank:

BC011519

Identification du gène (NCBI):

183

Nom complet:

angiotensinogen (serpin peptidase inhibitor, clade A, member 8)

MW calculé

485 aa, 53 kDa

MW observés:

53 kDa

Méthode de purification:

Purification par affinité contre l'antigène

Dilutions recommandées:

WB 1:1000-1:4000

IHC 1:50-1:500

Applications

Applications testées:

FC, IHC, WB, ELISA

Demandes citées:

IF, IHC, WB

Spécificité de l'espèce:

Humain

Espèces citées:

Humain, rat, souris

Contrôles positifs:

WB : cellules HuH-7, cellules HepG2, plasma humain

IHC : tissu hépatique humain,

Remarque-IHC: il est suggéré de démasquer l'antigène avec un tampon de TE buffer pH 9,0; (*) À défaut, le démasquage de l'antigène peut être effectué avec un tampon citrate pH 6,0.

Informations générales

Angiotensinogen is a precursor of angiotensin II (Ang II), is expressed and synthesized largely in the liver and is cleaved by the enzyme renin in response to lowered blood pressure. It has a key role in mediating vascular constriction and regulating salt and fluid homeostasis. The resulting product, angiotensin I, is then cleaved by angiotensin converting enzyme (ACE) to generate the physiologically active enzyme angiotensin II. Mutations in this gene are associated with susceptibility to essential hypertension, and can cause renal tubular dysgenesis, a severe disorder of renal tubular development. Defects in this gene also have been associated with non-familial structural atrial fibrillation, and inflammatory bowel disease.

Publications notables

Autrice	Pubmed ID	Journal	Application
Noriatsu Shigemura	31546789	Nutrients	IHC
Wei Chen	34655849	Int Immunopharmacol	WB,IHC
Dong Yi-Fei YF	21859961	Hypertension	IHC

Stockage

Stockage:

Stocker à -20°C. Stable pendant un an après l'expédition.

Tampon de stockage:

PBS avec azoture de sodium à 0,02 % et glycérol à 50 % pH 7,3

L'aliquotage n'est pas nécessaire pour le stockage à -20C

*** Les 20ul contiennent 0,1% de BSA.

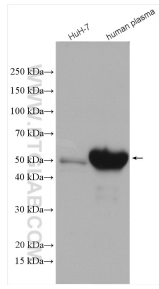
For technical support and original validation data for this product please contact:

T: 1 (888) 4PTGLAB (1-888-478-4522) (toll free in USA), or 1(312) 455-8498 (outside USA)

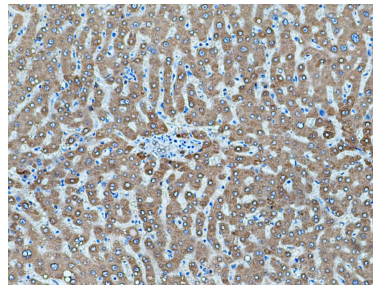
E: proteintech@ptglab.com
W: ptglab.com

This product is exclusively available under Proteintech Group brand and is not available to purchase from any other manufacturer.

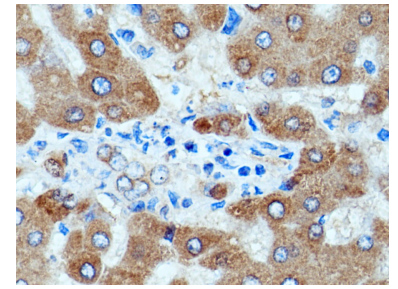
Données de validation sélectionnées



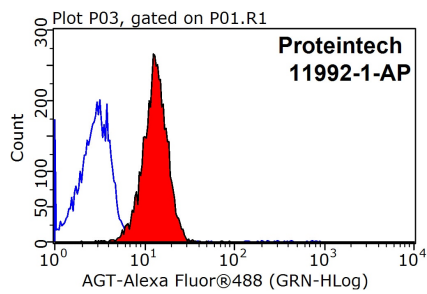
Various lysates were subjected to SDS PAGE followed by western blot with 11992-1-AP (Angiotensinogen antibody) at dilution of 1:2000 incubated at room temperature for 1.5 hours.



Immunohistochemical analysis of paraffin-embedded human liver tissue slide using 11992-1-AP (Angiotensinogen antibody) at dilution of 1:200 (under 10x lens). Heat mediated antigen retrieval with Tris-EDTA buffer (pH 9.0).



Immunohistochemical analysis of paraffin-embedded human liver tissue slide using 11992-1-AP (Angiotensinogen antibody) at dilution of 1:200 (under 40x lens). Heat mediated antigen retrieval with Tris-EDTA buffer (pH 9.0).



1X10⁶ HeLa cells were stained with 0.2ug Angiotensinogen antibody (11992-1-AP, red) and control antibody (blue). Fixed with 90% MeOH blocked with 3% BSA (30 min). Alexa Fluor 488-conjugated AffiniPure Goat Anti-Rabbit IgG(H+L) with dilution 1:1500.