

À des fins de recherche uniquement

# Anticorps Polyclonal de lapin anti-ERO1L



Numéro de catalogue: 12007-1-AP

7 Publications

## Informations de base

Numéro de catalogue: 12007-1-AP	Numéro d'acquisition GenBank: BC008674	Méthode de purification: Purification par affinité contre l'antigène
Taille: 150ul, Concentration: 900 µg/ml by Nanodrop and 420 µg/ml by Bradford method using BSA as the standard;	Identification du gène (NCBI): 30001	Dilutions recommandées: WB 1:200-1:1000 IHC 1:50-1:500
Hôte: Lapin	Nom complet: ERO1-like ( <i>S. cerevisiae</i> )	
Isotype: IgG	MW calculé: 468 aa, 54 kDa	
Immunogen Catalog Number: AG2620	MW observés: 54 kDa	

## Applications

Applications testées: FC, IHC, WB, ELISA	Contrôles positifs: WB : tissu ovarien de souris, cellules A431 IHC : tissu de cancer du pancréas humain,
Demandes citées: IF, WB	
Spécificité de l'espèce: Humain, rat, souris	
Espèces citées: Humain, porc, rat, souris	

**Remarque-IHC: il est suggéré de démasquer l'antigène avec un tampon de TE buffer pH 9,0; (\*) A défaut, le démasquage de l'antigène peut être effectué avec un tampon citrate pH 6,0.**

## Informations générales

ERO1L, also named as ERO1-alpha, is an essential oxidoreductase that oxidizes proteins in the endoplasmic reticulum to produce disulfide bonds. It acts by oxidizing directly P4HB/PDI isomerase through a direct disulfide exchange. It does not act as a direct oxidant of folding substrate, but relies on P4HB/PDI to transfer oxidizing equivalent. Associates with ERP44 but not with GRP54, demonstrating that it does not oxidize all PDI related proteins and can discriminate between PDI and related proteins. Its reoxidation probably involves electron transfer to molecular oxygen via FAD. Glutathione may be required to regulate its activity in the endoplasmic reticulum. It may be responsible for a significant proportion of reactive oxygen species (ROS) in the cell, thereby being a source of oxidative stress. It is required for the folding of immunoglobulin proteins. Responsible for the release of the unfolded cholera toxin from reduced P4HB/PDI in case of infection by *V.cholerae*, thereby playing a role in retrotranslocation of the toxin. This antibody has no cross reaction to ERO1.

## Publications notables

Autrice	Pubmed ID	Journal	Application
Yu Chen	34592660	Cell Calcium	WB
Nan Zhang	36220374	Brain Res	WB, IF
Renjie Sun	34287039	J Virol	WB

## Stockage

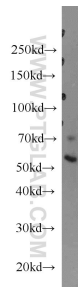
Stockage:  
Stocker à -20°C. Stable pendant un an après l'expédition.  
Tampon de stockage:  
PBS avec azoture de sodium à 0,02 % et glycérol à 50 % pH 7,3  
L'aliquotage n'est pas nécessaire pour le stockage à -20C

\*\*\* Les 20ul contiennent 0,1% de BSA.

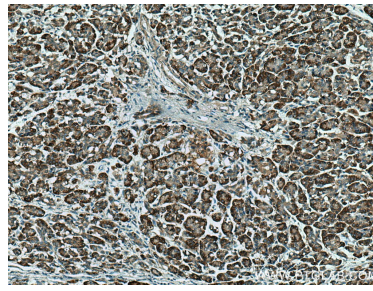
For technical support and original validation data for this product please contact:  
T: 1 (888) 4PTGLAB (1-888-478-4522) (toll free in USA), or 1(312) 455-8498 (outside USA)  
E: proteintech@ptglab.com  
W: ptglab.com

This product is exclusively available under Proteintech Group brand and is not available to purchase from any other manufacturer.

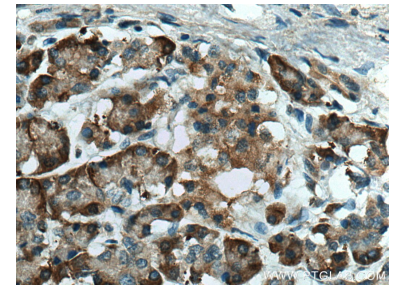
## Données de validation sélectionnées



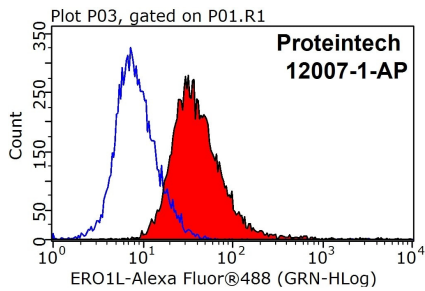
mouse ovary tissue were subjected to SDS PAGE followed by western blot with 12007-1-AP (ERO1L antibody) at dilution of 1:100 incubated at room temperature for 1.5 hours.



Immunohistochemical analysis of paraffin-embedded human pancreas cancer tissue slide using 12007-1-AP (ERO1L antibody) at dilution of 1:200 (under 10x lens). Heat mediated antigen retrieval with Tris-EDTA buffer (pH 9.0).



Immunohistochemical analysis of paraffin-embedded human pancreas cancer tissue slide using 12007-1-AP (ERO1L antibody) at dilution of 1:200 (under 40x lens). Heat mediated antigen retrieval with Tris-EDTA buffer (pH 9.0).



1X10<sup>6</sup> HeLa cells were stained with 0.2ug ERO1L antibody (12007-1-AP, red) and control antibody (blue). Fixed with 90% MeOH blocked with 3% BSA (30 min). Alexa Fluor 488-conjugated AffiniPure Goat Anti-Rabbit IgG(H+L) with dilution 1:1000.