

À des fins de recherche uniquement

Anticorps Polyclonal de lapin anti-CAMP



Numéro de catalogue: 12009-1-AP

5 Publications

Informations de base

Numéro de catalogue:

12009-1-AP

Taille:

150ul, Concentration: 650 µg/ml by Nanodrop;

Hôte:

Lapin

Isotype:

IgG

Immunogen Catalog Number:

AG2622

Numéro d'acquisition GenBank:

BC055089

Identification du gène (NCBI):

820

Nom complet:

cathelicidin antimicrobial peptide

MW calculé

170 aa, 19 kDa

Méthode de purification:

Purification par affinité contre l'antigène

Dilutions recommandées:

IHC 1:50-1:500

IF 1:200-1:800

Applications

Applications testées:

IF, IHC, ELISA

Demandes citées:

IHC

Spécificité de l'espèce:

Humain, souris

Contrôles positifs:

IHC : tissu splénique de souris, tissu cérébral de souris, tissu d'amygdalite humain, tissu de cancer du poumon humain, tissu splénique humain

IF : cellules HeLa, cellules THP-1

Remarque-IHC: il est suggéré de démasquer l'antigène avec un tampon de TE buffer pH 9.0; (*) À défaut, 'le démasquage de l'antigène peut être effectué avec un tampon citrate pH 6,0.

Informations générales

CAMP is a member of an antimicrobial peptide family, characterized by a highly conserved N-terminal signal peptide containing a cathelin domain and a structurally variable cationic antimicrobial peptide, which is produced by extracellular proteolysis from the C-terminus. In addition to its antibacterial, antifungal, and antiviral activities, the encoded protein functions in cell chemotaxis, immune mediator induction, and inflammatory response regulation. CAMP encodes the 18-kDa proprotein hCAP18. FALL-39 and LL-37 are the mature cathelicidin peptides. This antibody can recognize all the proprotein and cleaved species.

Publications notables

Autrice	Pubmed ID	Journal	Application
Muhua Huang	34493162	Pharm Biol	WB
Yinting Jiang	33190003	Immunobiology	IHC
Lingxia Li	31260839	Res Vet Sci	WB

Stockage

Stockage:

Stocker à -20°C. Stable pendant un an après l'expédition.

Tampon de stockage:

PBS avec azoture de sodium à 0,02 % et glycérol à 50 % pH 7,3

L'aliquotage n'est pas nécessaire pour le stockage à -20C

*** Les 20ul contiennent 0,1% de BSA.

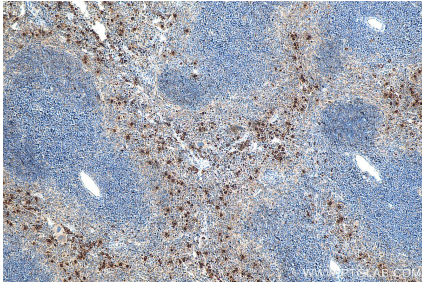
For technical support and original validation data for this product please contact:

T: 1 (888) 4PTGLAB (1-888-478-4522) (toll free in USA), or 1(312) 455-8498 (outside USA)

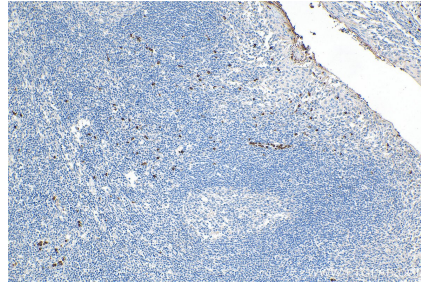
E: proteintech@ptglab.com
W: ptglab.com

This product is exclusively available under Proteintech Group brand and is not available to purchase from any other manufacturer.

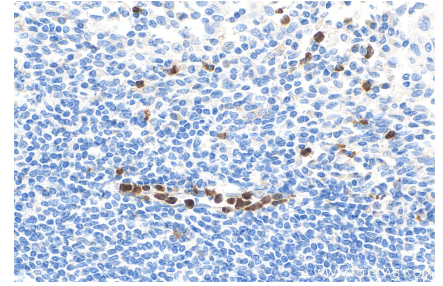
Données de validation sélectionnées



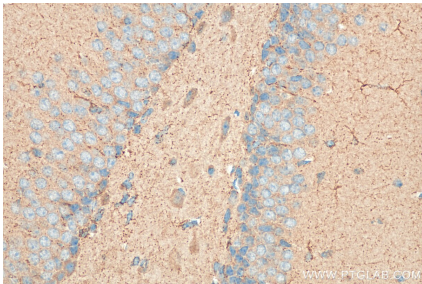
Immunohistochemical analysis of paraffin-embedded mouse spleen tissue slide using 12009-1-AP (CAMP antibody) at dilution of 1:200 (under 10x lens). Heat mediated antigen retrieval with Tris-EDTA buffer (pH 9.0).



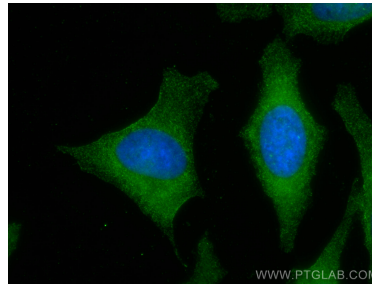
Immunohistochemical analysis of paraffin-embedded human tonsillitis tissue slide using 12009-1-AP (CAMP antibody) at dilution of 1:200 (under 10x lens). Heat mediated antigen retrieval with Tris-EDTA buffer (pH 9.0).



Immunohistochemical analysis of paraffin-embedded human tonsillitis tissue slide using 12009-1-AP (CAMP antibody) at dilution of 1:200 (under 40x lens). Heat mediated antigen retrieval with Tris-EDTA buffer (pH 9.0).



Immunohistochemical analysis of paraffin-embedded mouse brain tissue slide using 12009-1-AP (CAMP antibody) at dilution of 1:200 (under 40x lens). Heat mediated antigen retrieval with Tris-EDTA buffer (pH 9.0).



Immunofluorescent analysis of (-20°C Methanol) fixed HeLa cells using CAMP antibody (12009-1-AP) at dilution of 1:400 and CoraLite®488-Conjugated AffiniPure Goat Anti-Rabbit IgG(H+L).