

À des fins de recherche uniquement

Anticorps Polyclonal de lapin anti-SMYD3



Numéro de catalogue: 12011-1-AP

Phare

5 Publications

Informations de base

Numéro de catalogue:
12011-1-AP

Taille:
150ul, Concentration: 300 µg/ml by Nanodrop and 267 µg/ml by Bradford method using BSA as the standard;

Hôte:
Lapin

Isotype:
IgG

Immunogen Catalog Number:
AG2624

Numéro d'acquisition GenBank:
BC031010

Identification du gène (NCBI):
64754

Nom complet:
SET and MYND domain containing 3

MW calculé
428aa,49 kDa; 369aa,42 kDa

MW observés:
42-45 kDa

Méthode de purification:
Purification par affinité contre l'antigène

Dilutions recommandées:
WB 1:500-1:1000
IP 0.5-4.0 ug for IP and 1:500-1:1000 for WB
IHC 1:50-1:500
IF 1:50-1:500

Applications

Applications testées:
IF, IHC, IP, WB, ELISA

Demandes citées:
WB

Spécificité de l'espèce:
Humain, rat, souris

Espèces citées:
Humain, rat

Remarque-IHC: il est suggéré de démasquer l'antigène avec un tampon de TE buffer pH 9,0; (*) A défaut, 'le démasquage de l'antigène peut être 'effectué avec un tampon citrate pH 6,0.

Contrôles positifs:

WB : tissu cérébral de souris, cellules COLO 320, cellules HeLa, cellules HepG2

IP : cellules COLO 320,

IHC : tissu de cancer du sein humain, tissu de cancer du côlon humain

IF : cellules HEK-293,

Informations générales

SMYD3, also name as ZMYND1 and ZNFN3A1, belongs to the histone-lysine methyltransferase family. It is a histone methyltransferase that plays an important role in transcriptional regulation in human carcinogenesis. It can specifically methylate histone H3 at lysine 4 and activate the transcription of a set of downstream genes, including several oncogenes (e.g., N-myc, CrkL, Wnt10b, RIZ and hTERT) and genes involved in the control of cell cycle. (PMID: 20957523). It plays an important role in transcriptional activation as a member of an RNA polymerase complex. SMYD3 is frequently overexpressed in different types of cancer cells. It functions as a coactivator of Era and potentiates Era activity in response to ligand. SMYD3 as a new coactivator for ER-mediated transcription, providing a possible link between SMYD3 overexpression and breast cancer. (PMID: 19509295) The common variable number of tandem repeats polymorphism in SMYD3 is a susceptibility factor for some types of human cancer. (PMID:16155568) . SMYD3 exists some isoforms with MV 49, 43 and 30 kDa.

Publications notables

Autrice	Pubmed ID	Journal	Application
Xiaomei Liu	29130966	Cell Physiol Biochem	WB
Fen Long	34094832	Acta Pharm Sin B	WB
Ren Tian-nian TN	20957523	Med Oncol	WB

Stockage

Stockage:

Stocker à -20°C. Stable pendant un an après l'expédition.

Tampon de stockage:

PBS avec azoture de sodium à 0,02 % et glycérol à 50 % pH 7,3

L'aliquotage n'est pas nécessaire pour le stockage à -20C

*** Les 20ul contiennent 0,1% de BSA.

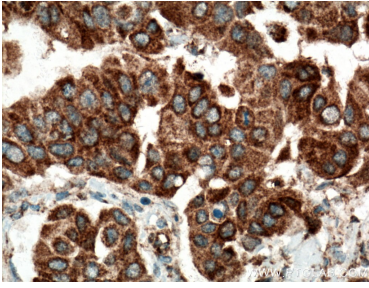
For technical support and original validation data for this product please contact:

T: 1 (888) 4PTGLAB (1-888-478-4522) (toll free in USA), or 1(312) 455-8498 (outside USA)

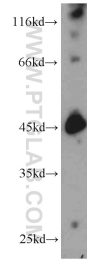
E: proteintech@ptglab.com
W: ptglab.com

This product is exclusively available under Proteintech Group brand and is not available to purchase from any other manufacturer.

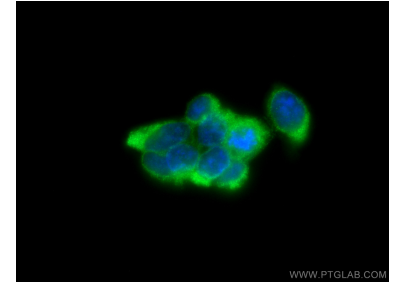
Données de validation sélectionnées



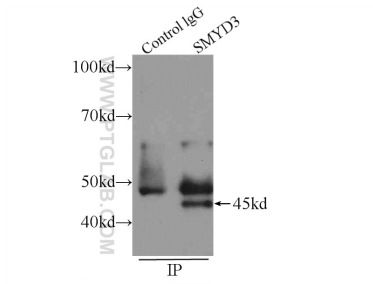
Immunohistochemical analysis of paraffin-embedded human breast cancer tissue slide using 12011-1-AP (SMYD3 antibody) at dilution of 1:200 (under 40x lens. Heat mediated antigen retrieval with Tris-EDTA buffer (pH 9.0).



mouse brain tissue were subjected to SDS PAGE followed by western blot with 12011-1-AP (SMYD3 antibody) at dilution of 1:800 incubated at room temperature for 1.5 hours.



Immunofluorescent analysis of (-20°C Ethanol) fixed HEK-293 cells using SMYD3 antibody (12011-1-AP) at dilution of 1:200 and CoraLite@488-Conjugated AffiniPure Goat Anti-Rabbit IgG(H+L).



IP Result of anti-SMYD3 (IP:12011-1-AP, 4ug; Detection:12011-1-AP 1:500) with COLO 320 cells lysate 1280ug.