

À des fins de recherche uniquement

Anticorps Polyclonal de lapin anti-MYCBP



Numéro de catalogue: 12022-1-AP

Phare

5 Publications

Informations de base

Numéro de catalogue:
12022-1-AP

Taille:
150ul, Concentration: 500 µg/ml by Nanodrop and 273 µg/ml by Bradford method using BSA as the standard;

Hôte:
Lapin

Isotype:
IgG

Immunogen Catalog Number:
AG2651

Numéro d'acquisition GenBank:
BC008686

Identification du gène (NCBI):
26292

Nom complet:
c-myc binding protein

MW calculé
103 aa, 12 kDa

MW observés:
12 kDa

Méthode de purification:
Purification par affinité contre l'antigène

Dilutions recommandées:
WB 1:500-1:3000
IHC 1:20-1:200
IF 1:20-1:200

Applications

Applications testées:
IF, IHC, WB, ELISA

Demandes citées:
IF, WB

Spécificité de l'espèce:
Humain

Espèces citées:
Humain, souris

Remarque-IHC: il est suggéré de démasquer l'antigène avec un tampon de TE buffer pH 9,0; (*) À défaut, 'le démasquage de l'antigène peut être 'effectué avec un tampon citrate pH 6,0.

Contrôles positifs:

WB : tissu cardiaque humain, cellules A549, cellules HEK-293, tissu placentaire humain, tissu pulmonaire humain, tissu rénal humain

IHC : tissu de cancer du pancréas humain,

IF : cellules HepG2,

Informations générales

MYC binding protein(MYCBP), encoded by MYCBP gene, binds to N-terminal region of MYC, and then MYC can activate E box-dependent transcription. Upon increasing expression of MYC, MYCBP translocates into the nucleus in the S phase of the cell cycle. MYCBP may involve in spermatogenesis, since it's found to be interacted with AKAP84/149 in the mitochondria in somatic cells and sperm. It highly expressed in heart, placenta, pancreas, skeletal muscle and kidney, but low in lung. This is a rabbit polyclonal antibody raised against full-length MYCBP of human origin.

Publications notables

Autrice	Pubmed ID	Journal	Application
Yongqi Wang	32965772	J Cell Mol Med	WB
Hagai Marmor-Kollet	33217318	Mol Cell	IF
S Mathia	29791781	Acta Physiol (Oxf)	WB

Stockage

Stockage:

Stocker à -20°C. Stable pendant un an après l'expédition.

Tampon de stockage:

PBS avec azoture de sodium à 0,02 % et glycérol à 50 % pH 7,3

L'aliquotage n'est pas nécessaire pour le stockage à -20C

*** Les 20ul contiennent 0,1% de BSA.

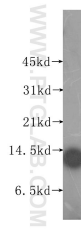
For technical support and original validation data for this product please contact:

T: 1 (888) 4PTGLAB (1-888-478-4522) (toll free in USA), or 1(312) 455-8498 (outside USA)

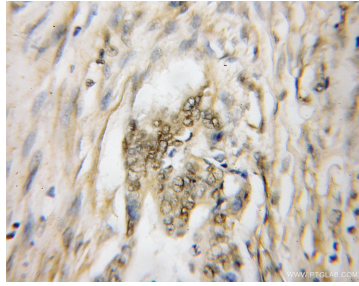
E: proteintech@ptglab.com
W: ptglab.com

This product is exclusively available under Proteintech Group brand and is not available to purchase from any other manufacturer.

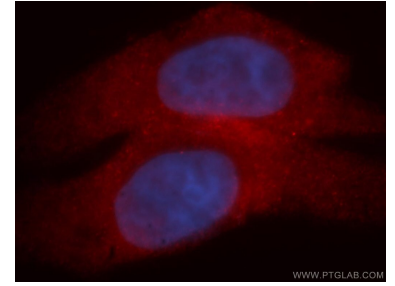
Données de validation sélectionnées



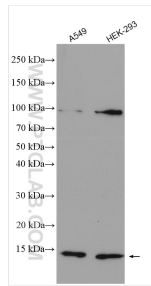
human heart tissue were subjected to SDS PAGE followed by western blot with 12022-1-AP (MYCBP antibody) at dilution of 1:500 incubated at room temperature for 1.5 hours.



Immunohistochemical analysis of paraffin-embedded human pancreas cancer using 12022-1-AP (MYCBP antibody) at dilution of 1:50 (under 10x lens).



Immunofluorescent analysis of HepG2 cells, using MYCBP antibody 12022-1-AP at 1:50 dilution and Rhodamine-labeled goat anti-rabbit IgG (red). Blue pseudocolor = DAPI (fluorescent DNA dye).



Various lysates were subjected to SDS PAGE followed by western blot with 12022-1-AP (MYCBP antibody) at dilution of 1:1000 incubated at room temperature for 1.5 hours.