

À des fins de recherche uniquement

Anticorps Polyclonal de lapin anti-NUCKS1



Numéro de catalogue: 12023-2-AP

Phare

3 Publications

Informations de base

Numéro de catalogue:
12023-2-AP

Taille:
150ul, Concentration: 900 µg/ml by Nanodrop and 440 µg/ml by Bradford method using BSA as the standard;

Hôte:
Lapin

Isotype:
IgG

Immunogen Catalog Number:
AG2652

Numéro d'acquisition GenBank:
BC000805

Identification du gène (NCBI):
64710

Nom complet:
nuclear casein kinase and cyclin-dependent kinase substrate 1

MW calculé
243 aa, 27 kDa

MW observés:
45 kDa

Méthode de purification:
Purification par affinité contre l'antigène

Dilutions recommandées:
WB 1:500-1:2000
IP 0.5-4.0 ug for IP and 1:500-1:1000 for WB
IHC 1:50-1:500

Applications

Applications testées:
IHC, IP, WB, ELISA

Demandes citées:
ChIP, IF, WB

Spécificité de l'espèce:
Humain

Espèces citées:
bovin, Humain

Remarque-IHC: il est suggéré de démasquer l'antigène avec un tampon de TE buffer pH 9,0; (*) A défaut, 'le démasquage de l'antigène peut être 'effectué avec un tampon citrate pH 6,0.

Contrôles positifs:

WB : cellules HEK-293, cellules L02, cellules MCF-7, cellules SGC-7901

IP : cellules HEK-293,

IHC : tissu de gliome humain,

Informations générales

Nuclear ubiquitous casein and cyclin-dependent kinase substrate 1 (NUCKS1) is a nuclear protein that is highly conserved in vertebrates. The conserved regions of the protein contain several consensus phosphorylation sites for casein kinase II and cyclin-dependent kinases, two putative nuclear localization signals, and a basic DNA-binding domain. It is phosphorylated by CDK1 and casein kinase during mitosis of the cell cycle. Phosphorylated upon DNA damage, probably by ATM or ATR. Widely expressed, with highest levels in thyroid gland, prostate and uterus and in fetal liver, thymus and lung. Two isoforms of NUCKS1 exist due to alternative splicing events.

Publications notables

| Autrice | Pubmed ID | Journal | Application |
|--------------|-----------|-----------------------|-------------|
| Erhu Zhao | 32958058 | J Exp Clin Cancer Res | WB |
| Samuel Hume | 34845229 | Nat Commun | ChIP |
| Xiaohan Yuan | 30710349 | J Cell Physiol | WB,IF |

Stockage

Stockage:

Stocker à -20°C. Stable pendant un an après l'expédition.

Tampon de stockage:

PBS avec azoture de sodium à 0,02 % et glycérol à 50 % pH 7,3

L'aliquotage n'est pas nécessaire pour le stockage à -20C

*** Les 20ul contiennent 0,1% de BSA.

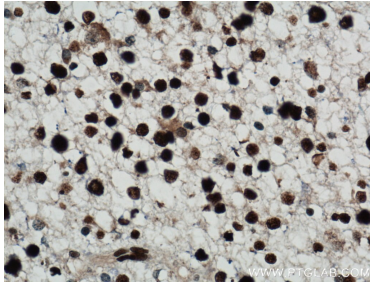
For technical support and original validation data for this product please contact:

T: 1 (888) 4PTGLAB (1-888-478-4522) (toll free in USA), or 1(312) 455-8498 (outside USA)

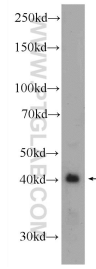
E: proteintech@ptglab.com
W: ptglab.com

This product is exclusively available under Proteintech Group brand and is not available to purchase from any other manufacturer.

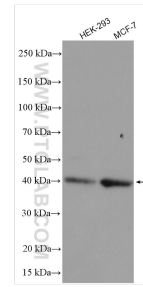
Données de validation sélectionnées



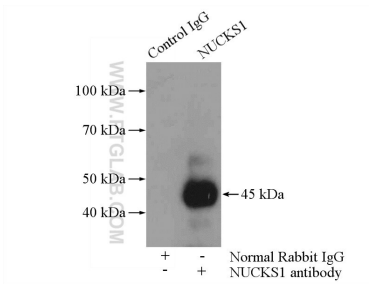
Immunohistochemical analysis of paraffin-embedded human gliomas tissue slide using 12023-2-AP (NUCKS1 antibody) at dilution of 1:100 (under 40x lens. Heat mediated antigen retrieval with Tris-EDTA buffer (pH 9.0)).



HEK-293 cells were subjected to SDS PAGE followed by western blot with 12023-2-AP (NUCKS1 Antibody) at dilution of 1:1000 incubated at room temperature for 1.5 hours.



Various lysates were subjected to SDS PAGE followed by western blot with 12023-2-AP (NUCKS1 antibody) at dilution of 1:3000 incubated at room temperature for 1.5 hours.



IP Result of anti-NUCKS1 (IP:12023-2-AP, 4µg; Detection:12023-2-AP 1:500) with HEK-293 cells lysate 2800ug.