

À des fins de recherche uniquement

# Anticorps Polyclonal de lapin anti-NUSAP1



Numéro de catalogue: 12024-1-AP

Phare

32 Publications

## Informations de base

Numéro de catalogue:

12024-1-AP

Taille:

150ul, Concentration: 750 µg/ml by Nanodrop;

Hôte:

Lapin

Isotype:

IgG

Immunogen Catalog Number:

AG2654

Numéro d'acquisition GenBank:

BC001308

Identification du gène (NCBI):

51203

Nom complet:

nucleolar and spindle associated protein 1

MW calculé

440 aa, 49 kDa

MW observés:

47-52 kDa

Méthode de purification:

Purification par affinité contre l'antigène

Dilutions recommandées:

WB 1:5000-1:50000

IP 0.5-4.0 ug for IP and 1:500-1:1000 for WB

IHC 1:50-1:500

IF 1:50-1:500

## Applications

Applications testées:

IF, IHC, IP, WB, ELISA

Demandes citées:

IF, IHC, WB

Spécificité de l'espèce:

Humain

Espèces citées:

Humain, rat, souris

Contrôles positifs:

WB : cellules HEK-293, cellules HeLa, cellules Jurkat

IP : cellules HeLa,

IHC : tissu de cancer de la prostate humain, tissu de cancer du côlon humain

IF : cellules HeLa,

**Remarque-IHC: il est suggéré de démasquer l'antigène avec un tampon de TE buffer pH 9,0; (\*) À défaut, le démasquage de l'antigène peut être effectué avec un tampon citrate pH 6,0.**

## Informations générales

NUSAP1, also named as ANKT, belongs to the NUSAP family. It is microtubule-associated protein with the capacity to bundle and stabilize microtubules. NUSAP1 may associate with chromosomes and promote the organization of mitotic spindle microtubules around them. NUSAP1 plays a role in connecting apoptosis with cell migration and it is a potentially involved in morphogenesis in vertebrates (PMID:21203972). NUSAP1 is an immunogenic antigen in 65% of patients with AML following allogeneic HCT and suggests a tumor antigen role (PMID:20053754). NuSAP1 protein level is tightly regulated by the APC/C ubiquitin ligase complex and NuSAP induces mitotic arrest dependent of its microtubule affinity (PMID:17618083). NUSAP1 is overexpressed in pituitary adenomas.

## Publications notables

Autrice	Pubmed ID	Journal	Application
Li Chen	26485712	PLoS One	IHC
Sofie De Munter	33054506	Cell Cycle	WB
Esmeralda Castelblanco	27796194	Thyroid	

## Stockage

Stockage:

Stocker à -20°C. Stable pendant un an après l'expédition.

Tampon de stockage:

PBS avec azoture de sodium à 0,02 % et glycérol à 50 % pH 7,3

L'aliquotage n'est pas nécessaire pour le stockage à -20C

\*\*\* Les 20ul contiennent 0,1% de BSA.

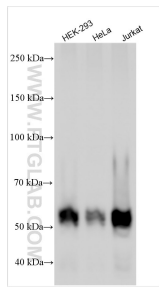
For technical support and original validation data for this product please contact:

T: 1 (888) 4PTGLAB (1-888-478-4522) (toll free in USA), or 1(312) 455-8498 (outside USA)

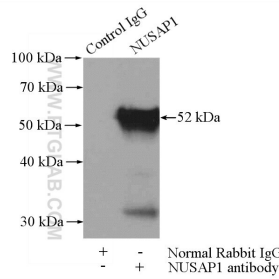
E: proteintech@ptglab.com  
W: ptglab.com

This product is exclusively available under Proteintech Group brand and is not available to purchase from any other manufacturer.

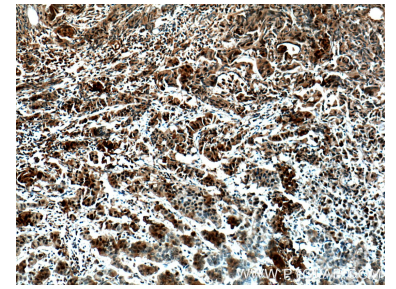
## Données de validation sélectionnées



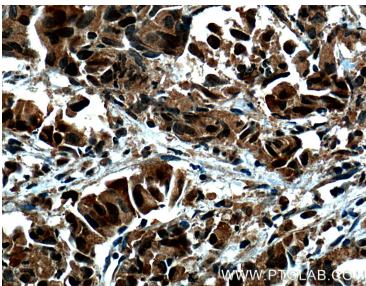
Various lysates were subjected to SDS PAGE followed by western blot with 12024-1-AP (NUSAP1 antibody) at dilution of 1:10000 incubated at room temperature for 1.5 hours.



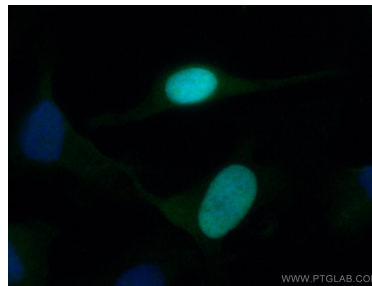
IP Result of anti-NUSAP1 (IP:12024-1-AP, 4ug; Detection:12024-1-AP 1:500) with HeLa cells lysate 2000ug.



Immunohistochemical analysis of paraffin-embedded human prostate cancer tissue slide using 12024-1-AP (NUSAP1 Antibody) at dilution of 1:200 (under 10x lens). Heat mediated antigen retrieval with Tris-EDTA buffer (pH 9.0).



Immunohistochemical analysis of paraffin-embedded human prostate cancer tissue slide using 12024-1-AP (NUSAP1 Antibody) at dilution of 1:200 (under 40x lens). Heat mediated antigen retrieval with Tris-EDTA buffer (pH 9.0).



Immunofluorescent analysis of (4% PFA) fixed HeLa cells using NUSAP1 antibody (12024-1-AP) at dilution of 1:200 and CoraLite®488-Conjugated AffiniPure Goat Anti-Rabbit IgG(H+L).