

À des fins de recherche uniquement

Anticorps Polyclonal de lapin anti-POP1



Numéro de catalogue: 12029-1-AP

Phare

4 Publications

Informations de base

Numéro de catalogue:
12029-1-AP

Taille:
150ul, Concentration: 650 µg/ml by
Nanodrop;

Hôte:
Lapin

Isotype:
IgG

Immunogen Catalog Number:
AG2660

Numéro d'acquisition GenBank:
BC011529

Identification du gène (NCBI):
10940

Nom complet:
processing of precursor 1,
ribonuclease P/MRP subunit (S.
cerevisiae)

MW calculé
1024 aa, 115 kDa

MW observés:
115 kDa

Méthode de purification:
Purification par affinité contre
l'antigène

Dilutions recommandées:
WB 1:2000-1:16000
IP 0.5-4.0 ug for IP and 1:2000-1:16000
for WB
IF 1:50-1:500

Applications

Applications testées:
IF, IP, WB, ELISA

Demandes citées:
IP, WB

Spécificité de l'espèce:
Humain, rat, souris

Espèces citées:
Humain

Contrôles positifs:

WB : cellules HeLa, cellules HepG2

IP : cellules HeLa,

IF : cellules HepG2,

Informations générales

Processing of Precursor 1 (POP1), a core component of RNase subunits, is an autoantigen in patients with connective tissue disease and is involved in suppressing inflammation.

Publications notables

Autrice	Pubmed ID	Journal	Application
Sung Ho Boo	36070699	Cell Rep	IP, WB
Ok Hyun Park	30930054	Mol Cell	WB
Sung Ho Boo	35613594	Cell Rep	WB

Stockage

Stockage:

Stocker à -20°C. Stable pendant un an après l'expédition.

Tampon de stockage:

PBS avec azoture de sodium à 0,02 % et glycérol à 50 % pH 7,3

L'aliquotage n'est pas nécessaire pour le stockage à -20C

*** Les 20ul contiennent 0,1% de BSA.

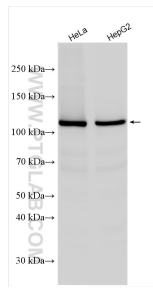
For technical support and original validation data for this product please contact:

T: 1 (888) 4PTGLAB (1-888-478-4522) (toll free
in USA), or 1(312) 455-8498 (outside USA)

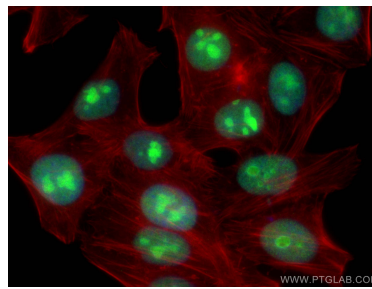
E: proteintech@ptglab.com
W: ptglab.com

This product is exclusively available under Proteintech Group brand and is not available to purchase from any other manufacturer.

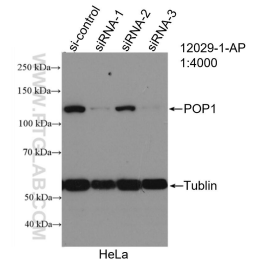
Données de validation sélectionnées



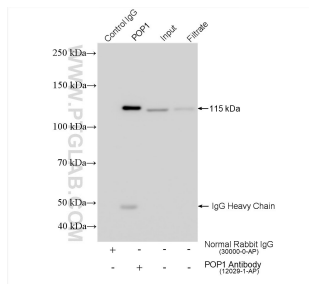
Various lysates were subjected to SDS PAGE followed by western blot with 12029-1-AP (POP1 antibody) at dilution of 1:8000 incubated at room temperature for 1.5 hours.



Immunofluorescent analysis of (4% PFA) fixed HepG2 cells using POP1 antibody (12029-1-AP) at dilution of 1:200 and CoraLite@488-Conjugated AffiniPure Goat Anti-Rabbit IgG(H+L), CL594-Phalloidin (red).



WB result of POP1 antibody (12029-1-AP; 1:4000; incubated at room temperature for 1.5 hours) with sh-Control and sh-POP1 transfected HeLa cells.



IP result of anti-POP1(IP:12029-1-AP, 4ug; Detection:12029-1-AP 1:8000) with HeLa cells lysate 1560 ug.