

À des fins de recherche uniquement

# Anticorps Polyclonal de lapin anti-CHI3L1/YKL40



Numéro de catalogue: 12036-1-AP

Phare

12 Publications

## Informations de base

<b>Numéro de catalogue:</b> 12036-1-AP	<b>Numéro d'acquisition GenBank:</b> BC008568	<b>Méthode de purification:</b> Purification par affinité contre l'antigène
<b>Taille:</b> 150ul , Concentration: 260 µg/ml by Nanodrop;	<b>Identification du gène (NCBI):</b> 1116	<b>Dilutions recommandées:</b> WB 1:500-1:2000 IHC 1:100-1:400 IF 1:50-1:500
<b>Hôte:</b> Lapin	<b>Nom complet:</b> chitinase 3-like 1 (cartilage glycoprotein-39)	
<b>Isotype:</b> IgG	<b>MW calculé</b> 383 aa, 43 kDa	
<b>Immunogen Catalog Number:</b> AG2710	<b>MW observés:</b> 40, 33 kDa	

## Applications

### Applications testées:

IF, IHC, WB, ELISA

### Demandes citées:

IF, IHC, WB

### Spécificité de l'espèce:

Humain, souris

### Espèces citées:

Humain, rat, souris

### Contrôles positifs:

WB : cellules THP-1,

IHC : tissu hépatique humain, tissu de tumeur ovarienne humain

IF : tissu cérébral de souris,

**Remarque-IHC: il est suggéré de démasquer l'antigène avec un tampon de TE buffer pH 9,0; (\*) À défaut, le démasquage de l'antigène peut être effectué avec un tampon citrate pH 6,0.**

## Informations générales

Chitinase 3-like-1 (CHI3L1/YKL-40/CGP-39/GP-39/hCGP-39) is a protein secreted from restricted cell types including colonic epithelial cells (CECs) and macrophages. CHI3L1 is an inflammation-associated molecule, and its expression is enhanced in persons with colitis and colon cancer. CHI3L1 is a 40 kDa protein and is produced by restricted cell types, including colonic epithelial cells (CECs) and macrophages. CHI3L1 can be detected in the Golgi apparatus and the endoplasmic reticulum, but its major sites of action seems to be extracellular as a secreted protein. (PMID:21763261)

## Publications notables

Autrice	Pubmed ID	Journal	Application
Zhongwei Xin	36115836	Nat Commun	IF
Zhuang Sha	33178594	Front Oncol	IHC
Hao Zhang	36134697	Mol Oncol	WB

## Stockage

### Stockage:

Stocker à -20°C. Stable pendant un an après l'expédition.

### Tampon de stockage:

PBS avec azoture de sodium à 0,02 % et glycérol à 50 % pH 7,3

L'aliquotage n'est pas nécessaire pour le stockage à -20C

\*\*\* Les 20ul contiennent 0,1% de BSA.

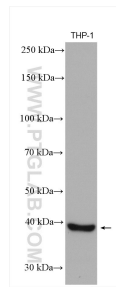
For technical support and original validation data for this product please contact:

T: 1 (888) 4PTGLAB (1-888-478-4522) (toll free in USA), or 1(312) 455-8498 (outside USA)

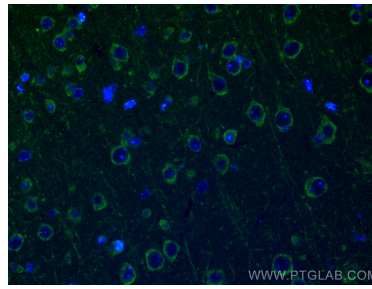
E: [proteintech@ptglab.com](mailto:proteintech@ptglab.com)  
W: [ptglab.com](http://ptglab.com)

This product is exclusively available under Proteintech Group brand and is not available to purchase from any other manufacturer.

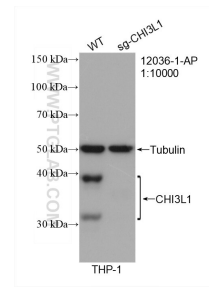
## Données de validation sélectionnées



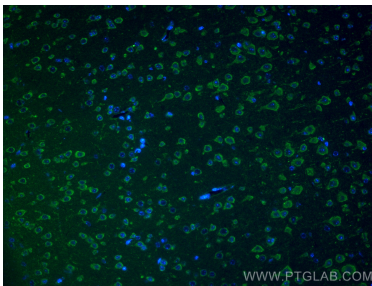
THP-1 cells were subjected to SDS PAGE followed by western blot with 12036-1-AP (CHI3L1/YKL40 antibody) at dilution of 1:1000 incubated at room temperature for 1.5 hours.



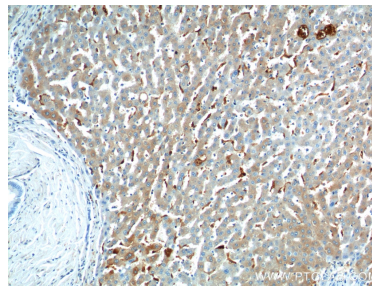
Immunofluorescent analysis of (4% PFA) fixed mouse brain tissue using CHI3L1/YKL40 antibody (12036-1-AP) at dilution of 1:200 and CoraLite®488-Conjugated AffiniPure Goat Anti-Rabbit IgG(H+L).



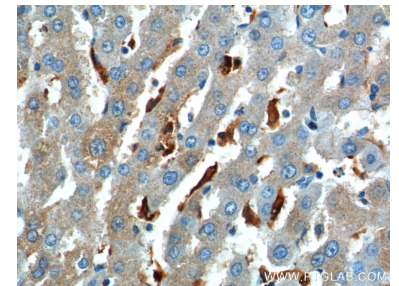
WB result of CHI3L1/YKL40 antibody (12036-1-AP; 1:10000; room temperature for 1.5 hours) with wild-type and CHI3L1/YKL40 knockout THP-1 cells.



Immunofluorescent analysis of (4% PFA) fixed mouse brain tissue using CHI3L1/YKL40 antibody (12036-1-AP) at dilution of 1:200 and CoraLite®488-Conjugated AffiniPure Goat Anti-Rabbit IgG(H+L).



Immunohistochemical analysis of paraffin-embedded human liver tissue slide using 12036-1-AP (CHI3L1 Antibody) at dilution of 1:200 (under 10x lens).



Immunohistochemical analysis of paraffin-embedded human liver tissue slide using 12036-1-AP (CHI3L1 Antibody) at dilution of 1:200 (under 40x lens).