

À des fins de recherche uniquement

# Anticorps Polyclonal de lapin anti-DVL2



Numéro de catalogue: 12037-1-AP

Phare

21 Publications

## Informations de base

Numéro de catalogue:  
12037-1-AP

Taille:  
150ul, Concentration: 1000 µg/ml by Nanodrop and 473 µg/ml by Bradford method using BSA as the standard;

Hôte:  
Lapin

Isotype:  
IgG

Immunogen Catalog Number:  
AG2666

Numéro d'acquisition GenBank:  
BC014844

Identification du gène (NCBI):  
1856  
Nom complet:  
dishevelled, dsh homolog 2 (Drosophila)

MW calculé:  
736 aa, 79 kDa

MW observés:  
90-95 kDa

Méthode de purification:  
Purification par affinité contre l'antigène

Dilutions recommandées:  
WB 1:2000-1:16000  
IP 0.5-4.0 ug for IP and 1:1000-1:8000 for WB  
IHC 1:50-1:500  
IF 1:200-1:800

## Applications

Applications testées:  
IF, IHC, IP, WB, ELISA

Demandes citées:  
CoIP, IF, IHC, IP, WB

Spécificité de l'espèce:  
Humain, rat, souris

Espèces citées:  
Humain, rat, souris, xénope

**Remarque-IHC: il est suggéré de démasquer l'antigène avec un tampon de TE buffer pH 9,0; (\*) A défaut, 'le démasquage de l'antigène peut être 'effectué avec un tampon citrate pH 6,0.**

Contrôles positifs:

WB : cellules HEK-293, cellules HepG2, cellules MCF-7, cellules MDA-MB-231, cellules MDA-MB-453s, cellules NIH/3T3, tissu de thymus de souris

IP : cellules MCF-7,

IHC : tissu de cancer du poumon humain, tissu de cancer de la prostate humain, tissu de côlon de rat, tissu de côlon de souris, tissu de gliome humain

IF : cellules HCT 116, cellules HepG2

## Informations générales

DVL2 is member of the dishevelled (dsh) protein family. DVL2 encodes a 90-kD protein that undergoes posttranslational phosphorylation to form a 95-kD cytoplasmic protein in a variety of cell lines and species. DVL2 participates in Wnt signaling by binding to the cytoplasmic C-terminus of frizzled family members and transducing the Wnt signal to down-stream effectors. It promotes internalization and degradation of frizzled proteins upon Wnt signaling. It plays a role both in canonical and non-canonical Wnt signaling. It also Plays a role in the signal transduction pathways mediated by multiple Wnt genes.

## Publications notables

Autrice	Pubmed ID	Journal	Application
Zhen-Yu Shi	29039446	Int J Mol Med	WB
Mélinée Futel	30171710	J Cell Biochem	WB,IF
Xiaolong Zhang	35998547	Biochem Biophys Res Commun	WB

## Stockage

Stockage:

Stocker à -20°C. Stable pendant un an après l'expédition.

Tampon de stockage:

PBS avec azoture de sodium à 0,02 % et glycérol à 50 % pH 7,3

L'aliquotage n'est pas nécessaire pour le stockage à -20C

\*\*\* Les 20ul contiennent 0,1% de BSA.

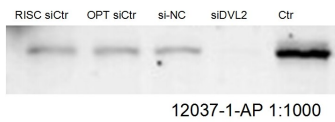
For technical support and original validation data for this product please contact:

T: 1 (888) 4PTGLAB (1-888-478-4522) (toll free in USA), or 1(312) 455-8498 (outside USA)

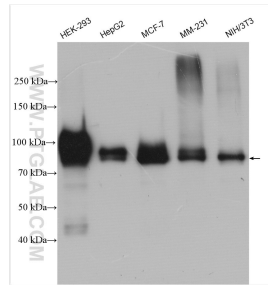
E: proteintech@ptglab.com  
W: ptglab.com

This product is exclusively available under Proteintech Group brand and is not available to purchase from any other manufacturer.

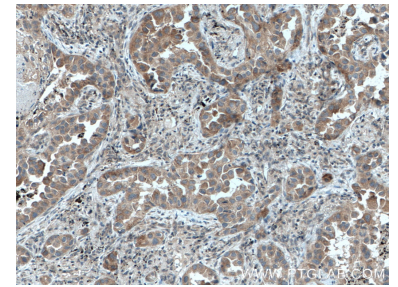
## Données de validation sélectionnées



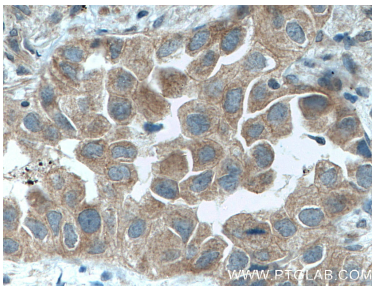
WB result of DVL2 antibody (12037-1-AP, 1:1000) with siDVL2 and si-control transfected cells.



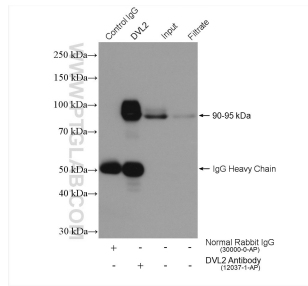
Various lysates were subjected to SDS PAGE followed by western blot with 12037-1-AP (DVL2 antibody) at dilution of 1:8000 incubated at room temperature for 1.5 hours.



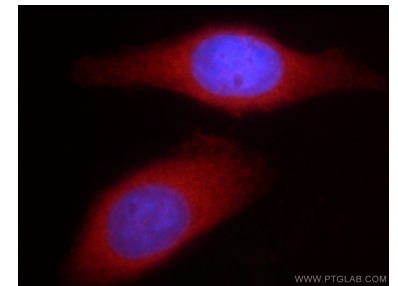
Immunohistochemical analysis of paraffin-embedded human lung cancer tissue slide using 12037-1-AP (DVL2 antibody) at dilution of 1:200 (under 10x lens. Heat mediated antigen retrieval with Tris-EDTA buffer (pH 9.0).



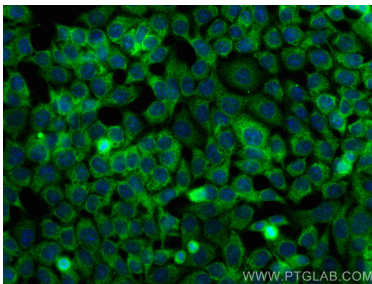
Immunohistochemical analysis of paraffin-embedded human lung cancer tissue slide using 12037-1-AP (DVL2 antibody) at dilution of 1:200 (under 40x lens. Heat mediated antigen retrieval with Tris-EDTA buffer (pH 9.0).



IP result of anti-DVL2 (IP:12037-1-AP, 4ug; Detection:12037-1-AP 1:4000) with MCF-7 cells lysate 640 ug.



Immunofluorescent analysis of HepG2 cells using 12037-1-AP (DVL2 antibody) at dilution of 1:50 and Rhodamine-Goat anti-Rabbit IgG.



Immunofluorescent analysis of (-20°C Ethanol) fixed HCT 116 cells using DVL2 antibody (12037-1-AP) at dilution of 1:400 and CoraLite®488-Conjugated AffiniPure Goat Anti-Rabbit IgG(H+L).