

À des fins de recherche uniquement

Anticorps Polyclonal de lapin anti-CRX



Numéro de catalogue: 12047-1-AP

2 Publications

Informations de base

Numéro de catalogue:
12047-1-AP

Taille:
150ul, Concentration: 1000 µg/ml by
Nanodrop;

Hôte:
Lapin

Isotype:
IgG

Immunogen Catalog Number:
AG2677

Numéro d'acquisition GenBank:
BC016664

Identification du gène (NCBI):
1406

Nom complet:
cone-rod homeobox

MW calculé:
299 aa, 32 kDa

MW observés:
37 kDa

Méthode de purification:
Purification par affinité contre
l'antigène

Dilutions recommandées:
WB 1:500-1:1000
IP 0.5-4.0 ug for IP and 1:500-1:1000
for WB

Applications

Applications testées:
IP, WB, ELISA

Demandes citées:
CoIP, IF, WB

Spécificité de l'espèce:
Humain, rat, souris

Espèces citées:
Humain, rat

Contrôles positifs:

WB : cellules Y79,

IP : cellules Y79,

Informations générales

Cone-rod homeobox (Crx) is a homeodomain transcription factor and member of the Otx family, which has been thought to play a critical role in determining and maintaining the phenotype of both pinealocytes and retinal photoreceptors [PMID:17467693]. In the mammalian retina, Crx plays an essential role in the normal development and maintenance of cones and rods and regulates expression of the network of genes that characterize the retina [PMID:17653270]. Elimination of Crx by disruption of the homeobox domain results in loss of the image-forming visual system but not the non-image-forming visual system controlling circadian rhythms [PMID:20438719].

Publications notables

Autrice	Pubmed ID	Journal	Application
Haibin Tian	36185374	iScience	IF
Tomohiro Masuda	25392503	J Neurosci	WB, CoIP

Stockage

Stockage:

Stocker à -20°C. Stable pendant un an après l'expédition.

Tampon de stockage:

PBS avec azoture de sodium à 0,02 % et glycérol à 50 % pH 7,3

L'aliquotage n'est pas nécessaire pour le stockage à -20C

*** Les 20ul contiennent 0,1% de BSA.

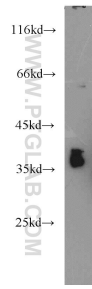
For technical support and original validation data for this product please contact:

T: 1 (888) 4PTGLAB (1-888-478-4522) (toll free
in USA), or 1(312) 455-8498 (outside USA)

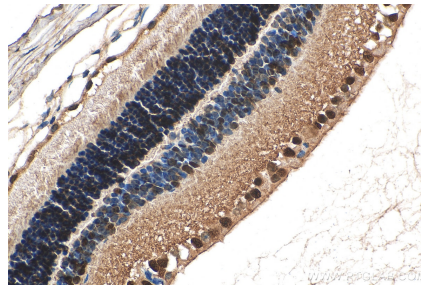
E: proteintech@ptglab.com
W: ptglab.com

This product is exclusively available under Proteintech Group brand and is not available to purchase from any other manufacturer.

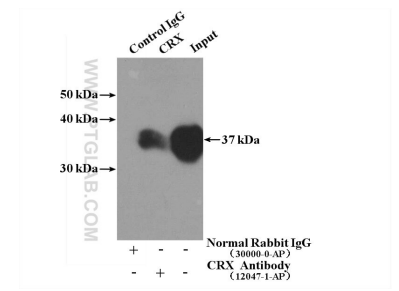
Données de validation sélectionnées



Y79 cells were subjected to SDS PAGE followed by western blot with 12047-1-AP (CRX antibody) at dilution of 1:500 incubated at room temperature for 1.5 hours.



Immunohistochemical analysis of paraffin-embedded mouse eye tissue slide using 12047-1-AP (CRX antibody) at dilution of 1:200 (under 40x lens). Heat mediated antigen retrieval with Tris-EDTA buffer (pH 9.0).



IP Result of anti-CRX (IP:12047-1-AP, 4ug; Detection:12047-1-AP 1:500) with Y79 cells lysate 1920ug.