

À des fins de recherche uniquement

Anticorps Polyclonal de lapin anti-BRF2



Numéro de catalogue: 12056-1-AP

1 Publications

Informations de base

Numéro de catalogue: 12056-1-AP	Numéro d'acquisition GenBank: BC010648	Méthode de purification: Purification par affinité contre l'antigène
Taille: 150ul, Concentration: 550 µg/ml by Nanodrop and 293 µg/ml by Bradford method using BSA as the standard;	Identification du gène (NCBI): 55290	Dilutions recommandées: WB 1:500-1:1000
Hôte: Lapin	Nom complet: BRF2, subunit of RNA polymerase III transcription initiation factor, BRF1-like	
Isotype: IgG	MW calculé 47 kDa	
Immunogen Catalog Number: AG2686	MW observés: 50-60 kDa	

Applications

Applications testées: WB, ELISA	Contrôles positifs: WB : cellules HT-1080, cellules DU 145
Demandes citées: WB	
Spécificité de l'espèce: Humain, rat, souris	
Espèces citées: Humain	

Informations générales

Human cells contain two types of RNA polymerase III transcription factor (TFIIIB), BRF1 and BRF2. BRF2, also named as BRFU, contains one TFIIIB-type zinc finger. It is a general activator of RNA polymerase III transcription. It is a factor exclusively required for RNA polymerase III transcription of genes with promoter elements upstream of the initiation sites. BRF2 is recruited to type 3 promoters such as the human U6 snRNA promoter. It differs from BRF1-TFIIIB in that it contains the TFIIIB-related factor BRF2 instead of BRF1 and its three components do not form a stable complex. This antibody is a rabbit polyclonal antibody raised against residues near the C terminus of human BRF2. It recognizes a 50-60kd band in WB analysis.

Publications notables

Autrice	Pubmed ID	Journal	Application
Jianfeng Sun	36369505	Nat Commun	WB

Stockage

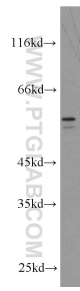
Stockage:
Stocker à -20°C. Stable pendant un an après l'expédition.
Tampon de stockage:
PBS avec azoture de sodium à 0,02 % et glycérol à 50 % pH 7,3
L'aliquotage n'est pas nécessaire pour le stockage à -20C

*** Les 20ul contiennent 0,1% de BSA.

For technical support and original validation data for this product please contact:
T: 1 (888) 4PTGLAB (1-888-478-4522) (toll free in USA), or 1(312) 455-8498 (outside USA)
E: proteintech@ptglab.com
W: ptglab.com

This product is exclusively available under Proteintech Group brand and is not available to purchase from any other manufacturer.

Données de validation sélectionnées



HT-1080 cells were subjected to SDS PAGE followed by western blot with 12056-1-AP (BRF2 antibody) at dilution of 1:300 incubated at room temperature for 1.5 hours.