

À des fins de recherche uniquement

Anticorps Polyclonal de lapin anti-ODF2



Numéro de catalogue: 12058-1-AP

Phare

37 Publications

Informations de base

Numéro de catalogue:
12058-1-AP

Taille:
150ul, Concentration: 533 µg/ml by
Bradford method using BSA as the
standard;

Hôte:
Lapin

Isotype:
IgG

Immunogen Catalog Number:
AG2693

Numéro d'acquisition GenBank:
BC010629

Identification du gène (NCBI):
4957

Nom complet:
outer dense fiber of sperm tails 2

MW calculé
763 aa, 89 kDa

MW observés:
67-100 kDa

Méthode de purification:
Purification par affinité contre
l'antigène

Dilutions recommandées:
WB 1:500-1:1000
IP 0.5-4.0 ug for IP and 1:500-1:1000
for WB
IHC 1:50-1:500
IF 1:10-1:100

Applications

Applications testées:
IF, IHC, IP, WB, ELISA

Demandes citées:
IF, IHC, WB

Spécificité de l'espèce:
Humain, rat, souris

Espèces citées:
Humain, rat, souris

**Remarque-IHC: il est suggéré de démasquer
l'antigène avec un tampon de TE buffer pH
9,0; (*) À défaut, 'le démasquage de
l'antigène peut être 'effectué avec un
tampon citrate pH 6,0.**

Contrôles positifs:

WB : tissu testiculaire de souris, tissu pulmonaire de
souris

IP : tissu testiculaire de souris,

IHC : tissu de cancer du sein humain,

IF : cellules HeLa,

Informations générales

ODF2 (outer dense fiber 2) is the major cenexin protein of the cytoskeleton of the sperm tail. In somatic cells, it is a component of the centrosome in which it is located in the appendages of the mother centriole. The gene for the cenexin protein, which was first identified as a protein marker of the mother centriole, was subsequently found to be identical to ODF2 and encodes transcripts cenexin 1 and cenexin 2. ODF2 is ubiquitously expressed in many cell types as various splicing variants. Additionally, ODF2 localizes to centrioles, basal bodies, and primary cilia, which are all structurally and functionally interconnected. ODF2 has 10 isoforms with MW 67-100 kDa.

Publications notables

Autrice	Pubmed ID	Journal	Application
Zhengang Zhang	27682589	Mol Biol Cell	WB
Dong Kong	25246616	J Cell Biol	IF
Gladiola Goranci-Buzhala	34496239	Cell Rep	WB

Stockage

Stockage:

Stocker à -20°C. Stable pendant un an après l'expédition.

Tampon de stockage:

PBS avec azoture de sodium à 0,02 % et glycérol à 50 % pH 7,3

L'aliquotage n'est pas nécessaire pour le stockage à -20C

*** Les 20ul contiennent 0,1% de BSA.

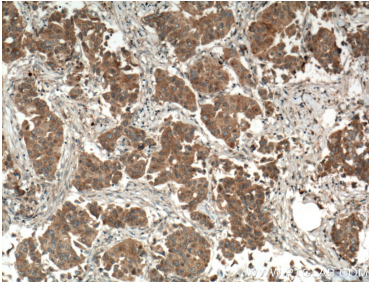
For technical support and original validation data for this product please contact:

T: 1 (888) 4PTGLAB (1-888-478-4522) (toll free
in USA), or 1(312) 455-8498 (outside USA)

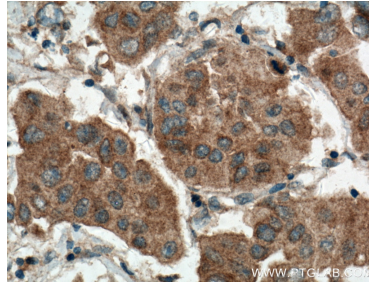
E: proteintech@ptglab.com
W: ptglab.com

This product is exclusively available under Proteintech Group brand and is not available to purchase from any other manufacturer.

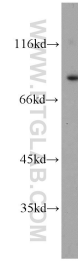
Données de validation sélectionnées



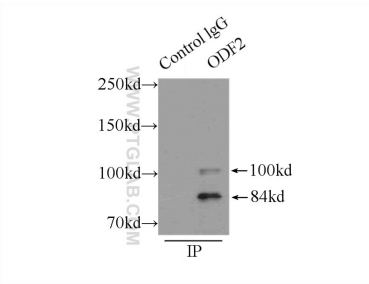
Immunohistochemical analysis of paraffin-embedded human breast cancer tissue slide using 12058-1-AP (ODF2 antibody) at dilution of 1:100 (under 10x lens. Heat mediated antigen retrieval with Tris-EDTA buffer (pH 9.0)).



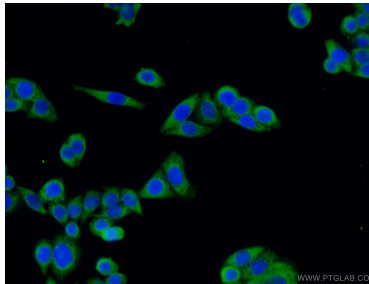
Immunohistochemical analysis of paraffin-embedded human breast cancer tissue slide using 12058-1-AP (ODF2 antibody) at dilution of 1:100 (under 40x lens. Heat mediated antigen retrieval with Tris-EDTA buffer (pH 9.0)).



mouse testis tissue were subjected to SDS PAGE followed by western blot with 12058-1-AP (ODF2 antibody) at dilution of 1:500 incubated at room temperature for 1.5 hours.



IP Result of anti-ODF2 (IP:12058-1-AP, 5ug; Detection:12058-1-AP 1:500) with mouse testis tissue lysate 8000ug.



Immunofluorescent analysis of HeLa cells using 12058-1-AP (ODF2 antibody) at dilution of 1:25 and Alexa Fluor 488-conjugated AffiniPure Goat Anti-Rabbit IgG(H+L).