

À des fins de recherche uniquement

# Anticorps Polyclonal de lapin anti-PSMD14/POH1



Numéro de catalogue: 12059-1-AP

Phare

10 Publications

## Informations de base

<b>Numéro de catalogue:</b> 12059-1-AP	<b>Numéro d'acquisition GenBank:</b> BC009524	<b>Méthode de purification:</b> Purification par affinité contre l'antigène
<b>Taille:</b> 150ul , Concentration: 750 µg/ml by Nanodrop and 333 µg/ml by Bradford method using BSA as the standard;	<b>Identification du gène (NCBI):</b> 10213	<b>Dilutions recommandées:</b> WB 1:500-1:1000 IHC 1:20-1:200 IF 1:200-1:800
<b>Hôte:</b> Lapin	<b>Nom complet:</b> proteasome (prosome, macropain) 26S subunit, non-ATPase, 14	
<b>Isotype:</b> IgG	<b>MW calculé:</b> 35 kDa	
<b>Immunogen Catalog Number:</b> AG2694	<b>MW observés:</b> 35 kDa	

## Applications

<b>Applications testées:</b> IF, IHC, WB, ELISA	<b>Contrôles positifs:</b> WB : cellules A431, cellules K-562 IHC : tissu de cancer du côlon humain, IF : cellules A375,
<b>Demandes citées:</b> IF, IHC, WB	
<b>Spécificité de l'espèce:</b> Humain	
<b>Espèces citées:</b> Humain	
<b>Remarque-IHC: il est suggéré de démasquer l'antigène avec un tampon de TE buffer pH 9,0; (*) A défaut, 'le démasquage de l'antigène peut être 'effectué avec un tampon citrate pH 6,0.</b>	

## Informations générales

The PSMD14 (POH1, also known as Rpn11/MPR1/S13/CepP1) protein is a metalloprotease component of the 26S proteasome that specifically cleaves 'Lys-63'-linked polyubiquitin chains. The 26S proteasome is involved in the ATP-dependent degradation of ubiquitinated proteins. PSMD14 is highly expressed in heart and skeletal muscle. In carcinoma cell lines, down-regulation of PSMD14 by siRNA transfection had a considerable impact on cell viability causing cell arrest in the G0-G1 phase, ultimately leading to senescence.

## Publications notables

Autrice	Pubmed ID	Journal	Application
Zitong Zhao	36328147	Biochim Biophys Acta Mol Basis Dis	WB,IHC
Boshi Wang	26510456	Nat Commun	WB, IHC, IF
Guoqing Luo	28535005	Mol Med Rep	WB,IHC

## Stockage

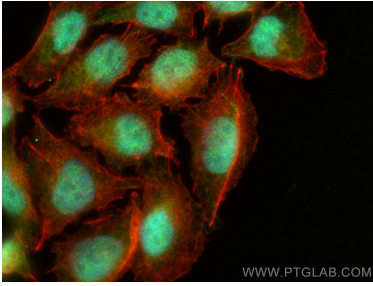
**Stockage:**  
Stocker à -20°C. Stable pendant un an après l'expédition.  
**Tampon de stockage:**  
PBS avec azoture de sodium à 0,02 % et glycérol à 50 % pH 7,3  
L'aliquotage n'est pas nécessaire pour le stockage à -20C

\*\*\* Les 20ul contiennent 0,1% de BSA.

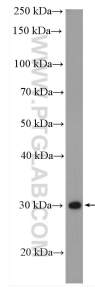
For technical support and original validation data for this product please contact:  
T: 1 (888) 4PTGLAB (1-888-478-4522) (toll free in USA), or 1(312) 455-8498 (outside USA)  
E: proteintech@ptglab.com  
W: ptglab.com

This product is exclusively available under Proteintech Group brand and is not available to purchase from any other manufacturer.

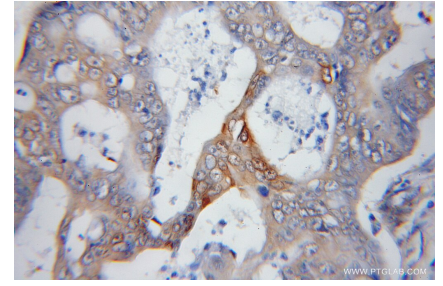
## Données de validation sélectionnées



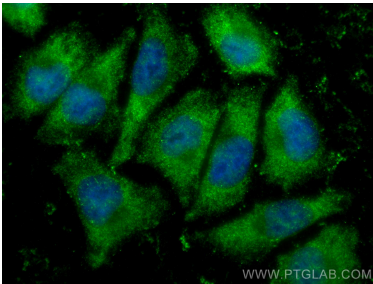
Immunofluorescent analysis of (4% PFA) fixed A375 cells using PSMD14/POH1 antibody (12059-1-AP) at dilution of 1:400 and CoraLite®488-Conjugated AffiniPure Goat Anti-Rabbit IgG(H+L), CL594-Phalloidin (red).



A431 cells were subjected to SDS PAGE followed by western blot with 12059-1-AP (PSMD14/POH1 antibody) at dilution of 1:600 incubated at room temperature for 1.5 hours.



Immunohistochemical analysis of paraffin-embedded human colon cancer using 12059-1-AP (PSMD14/POH1 antibody) at dilution of 1:50 (under 10x lens).



Immunofluorescent analysis of (-20°C Ethanol) fixed A375 cells using PSMD14/POH1 antibody (12059-1-AP) at dilution of 1:400 and CoraLite®488-Conjugated AffiniPure Goat Anti-Rabbit IgG(H+L).