

À des fins de recherche uniquement

Anticorps Polyclonal de lapin anti-KRAS



Numéro de catalogue: 12063-1-AP

Phare

111 Publications

Informations de base

Numéro de catalogue:
12063-1-AP

Taille:
150ul, Concentration: 650 µg/ml by
Nanodrop;

Hôte:
Lapin

Isotype:
IgG

Immunogen Catalog Number:
AG2700

Numéro d'acquisition GenBank:
BC013572

Identification du gène (NCBI):
3845

Nom complet:
v-Ki-ras2 Kirsten rat sarcoma viral
oncogene homolog

MW calculé
188 aa, 21 kDa

MW observés:
21 kDa

Méthode de purification:
Purification par affinité contre
l'antigène

Dilutions recommandées:
WB 1:5000-1:50000
IP 0.5-4.0 µg for IP and 1:500-1:2000
for WB
IHC 1:400-1:1600
IF 1:50-1:500

Applications

Applications testées:
FC, IF, IHC, IP, WB, ELISA

Demandes citées:
IF, IHC, IP, WB

Spécificité de l'espèce:
Humain, rat, souris

Espèces citées:
Humain, poulet, rat, souris

Remarque-IHC: il est suggéré de démasquer l'antigène avec un tampon de TE buffer pH 9.0; (*) À défaut, le démasquage de l'antigène peut être effectué avec un tampon citrate pH 6.0.

Contrôles positifs:

WB : cellules HEK-293, cellules A549, cellules HeLa, tissu cérébral de rat, tissu cérébral de souris, tissu cérébral humain, tissu hépatique de rat, tissu rénal de rat, tissu rénal de souris, tissu rénal humain

IP : cellules HeLa,

IHC : tissu de cancer du poumon humain, tissu de cancer du pancréas humain, tissu rénal humain

IF : cellules HeLa,

Informations générales

KRAS, also called p21, is a member of the Ras superfamily of proteins. It is located on human chromosome 12, and contains four coding exons and a 5' non-coding exon (PMID: 12778136). KRAS is a membrane-anchored guanosine triphosphate/guanosine diphosphate (GTP/GDP)-binding protein and is widely expressed in most human cells. Like other members of the Ras family, the KRAS protein is a GTPase, and it is involved in intracellular signal transduction and mainly responsible for EGFR-signaling activation (PMID: 19117687). KRAS mutations have been found in various malignancies, including lung adenocarcinoma, mucinous adenoma, ductal carcinoma of the pancreas and colorectal carcinoma.

Publications notables

Autrice	Pubmed ID	Journal	Application
Wang Jiang	33052229	Theranostics	WB,IHC
Linyu Sun	34555354	Mol Cell	WB
Makiko Tsuboi	28912272	J Biol Chem	WB

Stockage

Stockage:
Stocker à -20°C. Stable pendant un an après l'expédition.

Tampon de stockage:
PBS avec azoture de sodium à 0,02 % et glycérol à 50 % pH 7,3
L'aliquotage n'est pas nécessaire pour le stockage à -20C

*** Les 20ul contiennent 0,1% de BSA.

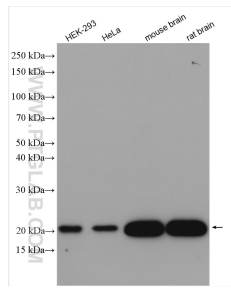
For technical support and original validation data for this product please contact:

T: 1 (888) 4PTGLAB (1-888-478-4522) (toll free in USA), or 1(312) 455-8498 (outside USA)

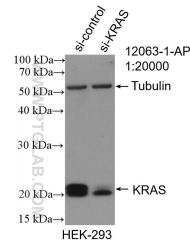
E: proteintech@ptglab.com
W: ptglab.com

This product is exclusively available under Proteintech Group brand and is not available to purchase from any other manufacturer.

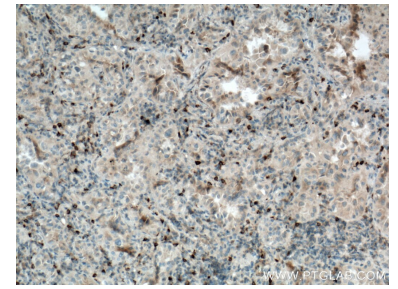
Données de validation sélectionnées



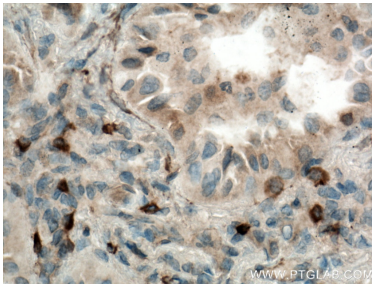
Various lysates were subjected to SDS PAGE followed by western blot with 12063-1-AP (KRAS antibody) at dilution of 1:10000 incubated at room temperature for 1.5 hours.



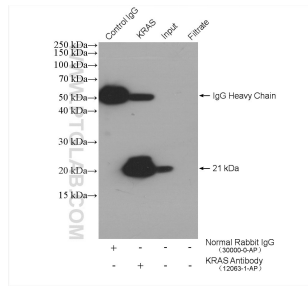
WB result of KRAS antibody (12063-1-AP; 1:2000; incubated at room temperature for 1.5 hours) with sh-Control and sh-KRAS transfected HEK-293 cells.



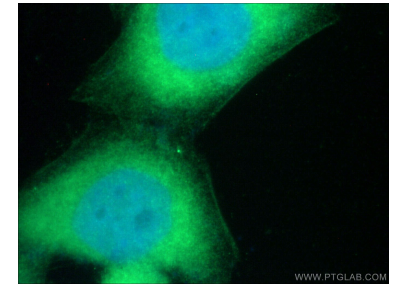
Immunohistochemical analysis of paraffin-embedded human lung cancer tissue slide using 12063-1-AP (KRAS antibody) at dilution of 1:800 (under 10x lens. Heat mediated antigen retrieval with Tris-EDTA buffer (pH 9.0).



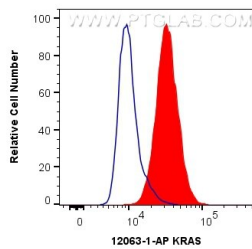
Immunohistochemical analysis of paraffin-embedded human lung cancer tissue slide using 12063-1-AP (KRAS antibody) at dilution of 1:800 (under 40x lens. Heat mediated antigen retrieval with Tris-EDTA buffer (pH 9.0).



IP result of anti-KRAS (IP:12063-1-AP, 4ug; Detection:12063-1-AP 1:1000) with HeLa cells lysate 2680 ug.



Immunofluorescent analysis of (-20°C Ethanol) fixed HeLa cells using 12063-1-AP (KRAS antibody) at dilution of 1:50 and Alexa Fluor 488-Conjugated AffiniPure Goat Anti-Rabbit IgG(H+L).



1X10⁶ HeLa cells were intracellularly stained with 0.4 ug Anti-Human KRAS (12063-1-AP) and CoraLite®488-Conjugated AffiniPure Goat Anti-Rabbit IgG(H+L) at dilution 1:1000 (red), or 0.4 ug Control Antibody. Cells were fixed with 4% PFA and permeabilized with Flow Cytometry Perm Buffer (PF00011-C).