

À des fins de recherche uniquement

# Anticorps Polyclonal de lapin anti-OTUB2



Numéro de catalogue: 12066-1-AP

## Informations de base

<b>Numéro de catalogue:</b> 12066-1-AP	<b>Numéro d'acquisition GenBank:</b> BC009615	<b>Méthode de purification:</b> Purification par affinité contre l'antigène
<b>Taille:</b> 150ul , Concentration: 550 µg/ml by Nanodrop;	<b>Identification du gène (NCBI):</b> 78990	<b>Dilutions recommandées:</b> WB 1:500-1:2000
<b>Hôte:</b> Lapin	<b>Nom complet:</b> OTU domain, ubiquitin aldehyde binding 2	
<b>Isotype:</b> IgG	<b>MW calculé</b> 234 aa, 27 kDa	
<b>Immunogen Catalog Number:</b> AG2703	<b>MW observés:</b> 27 kDa	

## Applications

<b>Applications testées:</b> WB, ELISA	<b>Contrôles positifs:</b> WB : tissu testiculaire de souris, tissu testiculaire de rat
<b>Spécificité de l'espèce:</b> rat, souris	

## Informations générales

OTUB2, also known as C14orf137, belongs to the OTU family. OTUB2 is a functional cysteine protease with deubiquitinase activity. OTUB2 mediates the deubiquitination of substrate proteins, and the targets of substrate proteins can be diversified. Therefore, OTUB2 has a wide range of biological roles, including protecting against virus-induced activation of interferon regulatory factor 3 (IRF3) and NF-κB, promoting beta cell survival in human pancreatic islets, and supporting the DNA repair pathway (PMID: 30662561, 35309903). OTUB2 is widely expressed, with high expression levels in the brain. OTUB2 has 2 isoforms with molecular weights of 9 and 27 kDa.

## Stockage

**Stockage:**  
Stocker à -20°C. Stable pendant un an après l'expédition.  
**Tampon de stockage:**  
PBS avec azoture de sodium à 0,02 % et glycérol à 50 % pH 7,3  
L'aliquotage n'est pas nécessaire pour le stockage à -20C

\*\*\* Les 20ul contiennent 0,1% de BSA.

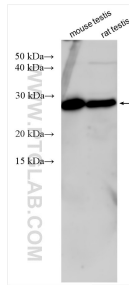
For technical support and original validation data for this product please contact:

T: 1 (888) 4PTGLAB (1-888-478-4522) (toll free in USA), or 1(312) 455-8498 (outside USA)

E: [proteintech@ptglab.com](mailto:proteintech@ptglab.com)  
W: [ptglab.com](http://ptglab.com)

This product is exclusively available under Proteintech Group brand and is not available to purchase from any other manufacturer.

## Données de validation sélectionnées



Various lysates were subjected to SDS PAGE followed by western blot with 12066-1-AP (OTUB2 antibody) at dilution of 1:1000 incubated at room temperature for 1.5 hours.