

À des fins de recherche uniquement

Anticorps Polyclonal de lapin anti-NBL1



Numéro de catalogue: 12069-1-AP

Informations de base

Numéro de catalogue: 12069-1-AP	Numéro d'acquisition GenBank: BC012037	Méthode de purification: Purification par affinité contre l'antigène
Taille: 150ul, Concentration: 300 µg/ml by Nanodrop and 133 µg/ml by Bradford method using BSA as the standard;	Identification du gène (NCBI): 4681	Dilutions recommandées: WB 1:200-1:1000
Hôte: Lapin	Nom complet: neuroblastoma, suppression of tumorigenicity 1	
Isotype: IgG	MW calculé: 180 aa, 19 kDa	
Immunogen Catalog Number: AG2706	MW observés: 19 kDa	

Applications

Applications testées: WB, ELISA	Contrôles positifs: WB : tissu de côlon de souris,
Spécificité de l'espèce: Humain, rat, souris	

Informations générales

NBL1 (neuroblastoma suppression of tumorigenicity 1), also named as DAN, is the founding member of the DAN subfamily. It was originally identified as a putative tumor suppressor gene in a transformed fibroblast rat model (PMID: 9516839), whereby it was significantly down-regulated in v-src-transformed rat fibroblasts. The MW of this protein is 19 kDa, and this antibody specially recognises the 19 kDa protein.

Stockage

Stockage:
Stocker à -20°C. Stable pendant un an après l'expédition.
Tampon de stockage:
PBS avec azoture de sodium à 0,02 % et glycérol à 50 % pH 7,3
L'aliquotage n'est pas nécessaire pour le stockage à -20C

*** Les 20ul contiennent 0,1% de BSA.

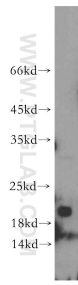
For technical support and original validation data for this product please contact:

T: 1 (888) 4PTGLAB (1-888-478-4522) (toll free in USA), or 1(312) 455-8498 (outside USA)

E: proteintech@ptglab.com
W: ptglab.com

This product is exclusively available under Proteintech Group brand and is not available to purchase from any other manufacturer.

Données de validation sélectionnées



mouse colon tissue were subjected to SDS PAGE followed by western blot with 12069-1-AP (NBL1 antibody) at dilution of 1:100 incubated at room temperature for 1.5 hours.