

À des fins de recherche uniquement

Anticorps Polyclonal de lapin anti-STAT5A/B



Numéro de catalogue: 12071-1-AP

7 Publications

Informations de base

Numéro de catalogue:
12071-1-AP

Taille:
150ul, Concentration: 600 µg/ml by
Nanodrop;

Hôte:
Lapin

Isotype:
IgG

Immunogen Catalog Number:
AG2709

Numéro d'acquisition GenBank:
BC020868

Identification du gène (NCBI):
6777

Nom complet:
signal transducer and activator of
transcription 5B

MW calculé
787 aa, 90 kDa

MW observés:
90 kDa

Méthode de purification:
Purification par affinité contre
l'antigène

Dilutions recommandées:
WB 1:1000-1:6000
IP 0.5-4.0 ug for IP and 1:1000-1:8000
for WB
IHC 1:50-1:500
IF 1:10-1:100

Applications

Applications testées:
IF, IHC, IP, WB, ELISA

Demandes citées:
IF, IP, WB

Spécificité de l'espèce:
Humain

Espèces citées:
Humain, rat, souris

Remarque-IHC: il est suggéré de démasquer l'antigène avec un tampon de TE buffer pH 9,0; (*) À défaut, le démasquage de l'antigène peut être effectué avec un tampon citrate pH 6,0.

Contrôles positifs:

WB : cellules HeLa, cellules Jurkat, cellules K-562, cellules MOLT-4

IP : cellules HeLa,

IHC : tissu de cancer du col de l'utérus humain, tissu de cancer du poumon humain, tissu de cancer du sein humain

IF : cellules HepG2,

Informations générales

STAT5B belongs to the transcription factor STAT family. In response to cytokines and growth factors, STAT family members are phosphorylated by the receptor associated kinases, and then form homo- or heterodimers that translocate to the cell nucleus where they act as transcription activators. STAT5B carries out a dual function: signal transduction and activation of transcription. STAT5B mediates the signal transduction triggered by various cell ligands, such as IL2, IL4, CSF1, and different growth hormones. It has been shown to be involved in diverse biological processes, such as TCR signaling, apoptosis, adult mammary gland development, and sexual dimorphism of liver gene expression. Although this antibody is a rabbit polyclonal antibody raised against residues near the N terminus of human STAT5B, the homology between this segment and the corresponding segment of human STAT5A is 95%. It shows that this antibody can cross-react with STAT5A.

Publications notables

Autrice	Pubmed ID	Journal	Application
Huan Ge	36306591	Biomed Pharmacother	WB
Furong Zhang	26493931	Toxicol Appl Pharmacol	WB, IP, IF
Dong Ma	27856242	Biochem Biophys Res Commun	WB

Stockage

Stockage:

Stocker à -20°C. Stable pendant un an après l'expédition.

Tampon de stockage:

PBS avec azoture de sodium à 0,02 % et glycérol à 50 % pH 7,3

L'aliquotage n'est pas nécessaire pour le stockage à -20C

*** Les 20ul contiennent 0,1% de BSA.

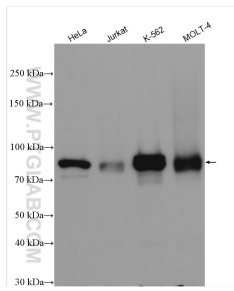
For technical support and original validation data for this product please contact:

T: 1 (888) 4PTGLAB (1-888-478-4522) (toll free in USA), or 1(312) 455-8498 (outside USA)

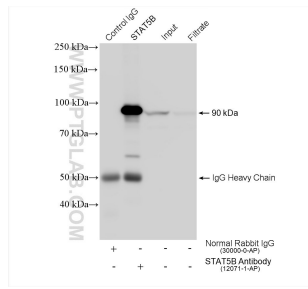
E: proteintech@ptglab.com
W: ptglab.com

This product is exclusively available under Proteintech Group brand and is not available to purchase from any other manufacturer.

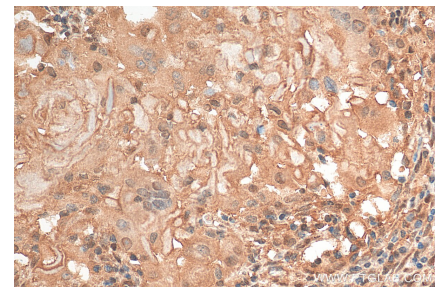
Données de validation sélectionnées



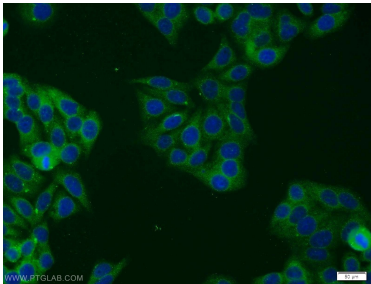
Various lysates were subjected to SDS PAGE followed by western blot with 12071-1-AP (STAT5A/B antibody) at dilution of 1:3000 incubated at room temperature for 1.5 hours.



IP result of anti-STAT5A/B(IP:12071-1-AP, 4ug; Detection:12071-1-AP 1:4000) with HeLa cells lysate 1720 ug.



Immunohistochemical analysis of paraffin-embedded human cervical cancer tissue slide using 12071-1-AP (STAT5A/B antibody) at dilution of 1:200 (under 40x lens). Heat mediated antigen retrieval with Tris-EDTA buffer (pH 9.0).



Immunofluorescent analysis of HepG2 cells using 12071-1-AP (STAT5A/B antibody) at dilution of 1:25 and Alexa Fluor 488-conjugated AffiniPure Goat Anti-Rabbit IgG(H+L).