

À des fins de recherche uniquement

Anticorps Polyclonal de lapin anti-SPIN1



Numéro de catalogue: 12105-1-AP

Phare

11 Publications

Informations de base

Numéro de catalogue:
12105-1-AP

Taille:
150ul, Concentration: 600 µg/ml by Nanodrop and 287 µg/ml by Bradford method using BSA as the standard;

Hôte:
Lapin

Isotype:
IgG

Immunogen Catalog Number:
AG2750

Numéro d'acquisition GenBank:
BC013571

Identification du gène (NCBI):
10927

Nom complet:
spindlin 1

MW calculé:
262 aa, 30 kDa

MW observés:
30 kDa

Méthode de purification:
Purification par affinité contre l'antigène

Dilutions recommandées:
WB 1:1000-1:6000
IP 0.5-4.0 ug for IP and 1:500-1:1000 for WB
IF 1:20-1:200

Applications

Applications testées:
IF, IP, WB, ELISA

Demandes citées:
ChIP, IF, IHC, IP, WB

Spécificité de l'espèce:
Humain, rat, souris

Espèces citées:
Humain, souris

Contrôles positifs:

WB : cellules HeLa, cellules PC-3

IP : cellules HeLa,

IF : cellules HEK-293,

Informations générales

SPIN1, also named as OCR and SPIN, plays a role in cell-cycle regulation during the transition from gamete to embryo. SPIN1 induces necrotic cell death via autophagy. It plays a critical role in necrotic cell death in cultured human cells. SPIN1 bound the antiapoptotic protein BCL2 and the apoptosis regulator BCLXL and induced cell death via a pathway that was independent of mitochondrial cytochrome c release and caspase activation

Publications notables

Autrice	Pubmed ID	Journal	Application
Shun Li	33320589	ACS Biomater Sci Eng	WB
Xiaolei Zhang	30249398	Biochem Biophys Res Commun	WB,IF
Aurélie Ducroux	25211330	PLoS Pathog	WB, IP

Stockage

Stockage:

Stocker à -20°C. Stable pendant un an après l'expédition.

Tampon de stockage:

PBS avec azoture de sodium à 0,02 % et glycérol à 50 % pH 7,3

L'aliquotage n'est pas nécessaire pour le stockage à -20C

*** Les 20ul contiennent 0,1% de BSA.

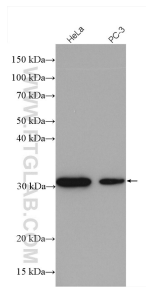
For technical support and original validation data for this product please contact:

T: 1 (888) 4PTGLAB (1-888-478-4522) (toll free in USA), or 1(312) 455-8498 (outside USA)

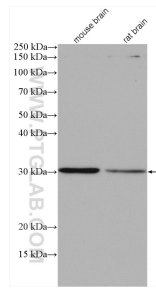
E: proteintech@ptglab.com
W: ptglab.com

This product is exclusively available under Proteintech Group brand and is not available to purchase from any other manufacturer.

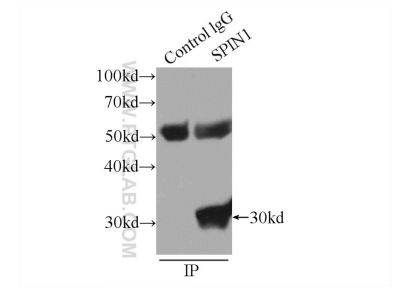
Données de validation sélectionnées



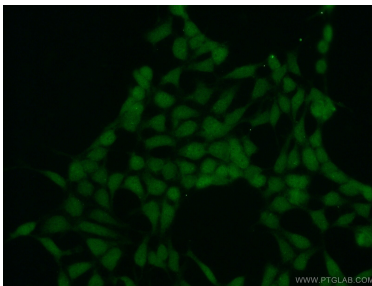
Various lysates were subjected to SDS PAGE followed by western blot with 12105-1-AP (SPIN1 antibody) at dilution of 1:3000 incubated at room temperature for 1.5 hours.



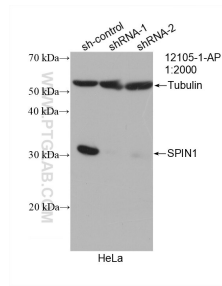
Various lysates were subjected to SDS PAGE followed by western blot with 12105-1-AP (SPIN1 antibody) at dilution of 1:1000 incubated at room temperature for 1.5 hours.



IP Result of anti-SPIN1 (IP:12105-1-AP, 3ug; Detection:12105-1-AP 1:800) with HeLa cells lysate 1840ug.



Immunofluorescent analysis of HEK-293 cells using 12105-1-AP (SPIN1 antibody) at dilution of 1:50 and Alexa Fluor 488-conjugated AffiniPure Goat Anti-Rabbit IgG(H+L).



WB result of SPIN1 antibody (12105-1-AP; 1:2000; incubated at room temperature for 1.5 hours) with sh-Control and sh-SPIN1 transfected HeLa cells.