

À des fins de recherche uniquement

Anticorps Polyclonal de lapin anti-TRIM21



Numéro de catalogue: 12108-1-AP

Phare

47 Publications

Informations de base

Numéro de catalogue:

12108-1-AP

Taille:

150ul, Concentration: 450 µg/ml by Nanodrop;

Hôte:

Lapin

Isotype:

IgG

Immunogen Catalog Number:

AG2753

Numéro d'acquisition GenBank:

BC010861

Identification du gène (NCBI):

6737

Nom complet:

tripartite motif-containing 21

MW calculé

475 aa, 54 kDa

MW observés:

42-45 kDa, 49-54 kDa

Méthode de purification:

Purification par affinité contre l'antigène

Dilutions recommandées:

WB 1:5000-1:50000

IP 0.5-4.0 µg for IP and 1:500-1:1000 for WB

IHC 1:50-1:500

Applications

Applications testées:

IHC, IP, WB, ELISA

Demandes citées:

coIP, IF, IHC, IP, WB

Spécificité de l'espèce:

Humain

Espèces citées:

Humain, porc, souris, Hamster

Contrôles positifs:

WB : cellules HEK-293, cellules A549, cellules HeLa, cellules HL-60, cellules HT-1080, cellules HT-29, cellules MCF-7

IP : cellules A549,

IHC : tissu de cancer du pancréas humain, tissu de cancer du côlon humain

Remarque-IHC: il est suggéré de démasquer l'antigène avec un tampon de TE buffer pH 9,0; (*) À défaut, le démasquage de l'antigène peut être effectué avec un tampon citrate pH 6,0.

Informations générales

TRIM21 has multiple N-terminal zinc finger motifs (has E3 ligase activity), a central leucine zipper, and a potential N-glycosylation site. TRIM3 is a E3 ubiquitin-protein ligase. It can form a ubiquitin ligase complex with E2 UBE2D2, which function not only for the ubiquitination of USP4 and IKBKB but also for its self-ubiquitination. It has a role in the regulation of the cell cycle progression and could enhance the decapping activity of DCP2. It can exist in all mammalian cells as a ribonucleoprotein particle, which composed of a single polypeptide and 1 of 4 small RNA molecules. TRIM21 exists various isoforms and range molecular weight of isoforms is about 42-45kDa and 49-54 kDa.

Publications notables

Autrice	Pubmed ID	Journal	Application
Xin-Feng Liu	33125618	Neurochem Res	WB
Pushuai Wen	36307841	Cell Commun Signal	WB,IHC,IF
Yin Zhao	34689010	Oral Oncol	WB,IF,IP

Stockage

Stockage:

Stocker à -20°C. Stable pendant un an après l'expédition.

Tampon de stockage:

PBS avec azoture de sodium à 0,02 % et glycérol à 50 % pH 7,3

L'aliquotage n'est pas nécessaire pour le stockage à -20C

*** Les 20ul contiennent 0,1% de BSA.

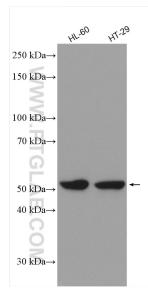
For technical support and original validation data for this product please contact:

T: 1 (888) 4PTGLAB (1-888-478-4522) (toll free in USA), or 1(312) 455-8498 (outside USA)

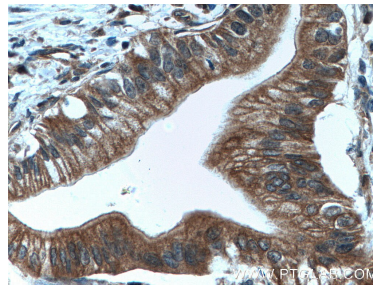
E: proteintech@ptglab.com
W: ptglab.com

This product is exclusively available under Proteintech Group brand and is not available to purchase from any other manufacturer.

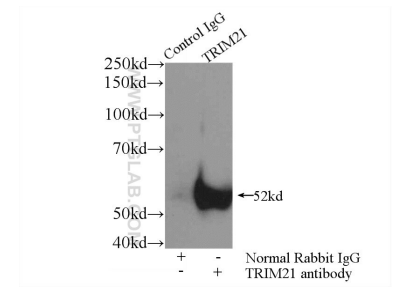
Données de validation sélectionnées



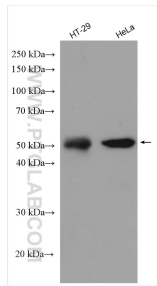
Various lysates were subjected to SDS PAGE followed by western blot with 12108-1-AP (TRIM21 antibody) at dilution of 1:2000 incubated at room temperature for 1.5 hours.



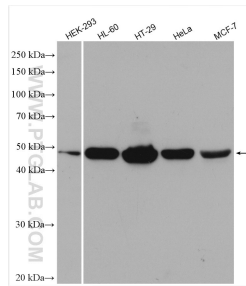
Immunohistochemical analysis of paraffin-embedded human pancreas cancer tissue slide using 12108-1-AP (TRIM21 antibody) at dilution of 1:200 (under 40x lens. Heat mediated antigen retrieval with Tris-EDTA buffer (pH 9.0).



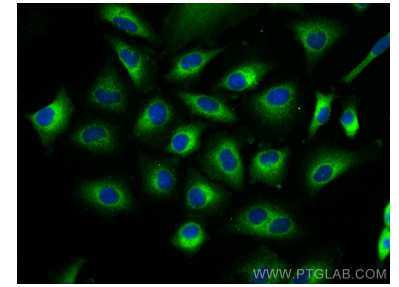
IP Result of anti-TRIM21 (IP:12108-1-AP, 4ug; Detection:12108-1-AP 1:500) with A549 cells lysate 920ug.



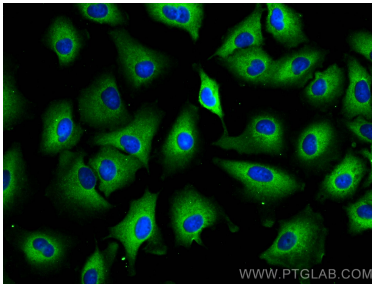
Various lysates were subjected to SDS PAGE followed by western blot with 12108-1-AP (TRIM21 antibody) at dilution of 1:4000 incubated at room temperature for 1.5 hours.



Various lysates were subjected to SDS PAGE followed by western blot with 12108-1-AP (TRIM21 antibody) at dilution of 1:10000 incubated at room temperature for 1.5 hours.



Immunofluorescent analysis of (-20°C Methanol) fixed A549 cells using TRIM21 antibody (12108-1-AP) at dilution of 1:400 and CoraLite®488-Conjugated AffiniPure Goat Anti-Rabbit IgG(H+L).



Immunofluorescent analysis of (-20°C Methanol) fixed A549 cells using TRIM21 antibody (12108-1-AP) at dilution of 1:400 and CoraLite®488-Conjugated AffiniPure Goat Anti-Rabbit IgG(H+L).