

À des fins de recherche uniquement

Anticorps Polyclonal de lapin anti-PADI2



Numéro de catalogue: 12110-1-AP

Phare

50 Publications

Informations de base

Numéro de catalogue:

12110-1-AP

Taille:

150ul, Concentration: 600 µg/ml by Nanodrop;

Hôte:

Lapin

Isotype:

IgG

Immunogen Catalog Number:

AG2755

Numéro d'acquisition GenBank:

BC009701

Identification du gène (NCBI):

11240

Nom complet:

peptidyl arginine deiminase, type II

MW calculé

665 aa, 75 kDa

MW observés:

70-75 kDa, 50 kDa

Méthode de purification:

Purification par affinité contre l'antigène

Dilutions recommandées:

WB 1:500-1:2000

IP 0.5-4.0 ug for IP and 1:200-1:1000 for WB

IHC 1:50-1:500

IF 1:10-1:100

Applications

Applications testées:

IF, IHC, IP, WB, ELISA

Demandes citées:

Blocking assay, COIP, FC, IF, IHC, WB

Spécificité de l'espèce:

Humain, rat, souris

Espèces citées:

canin, Humain, porc, rat, souris

Contrôles positifs:

WB : tissu cérébral de souris, cellules MCF-7, tissu cérébral de rat

IP : tissu cérébral de souris,

IHC : tissu de cancer du sein humain,

IF : cellules BxPC-3, cellules HeLa, tissu de cancer du sein humain

Remarque-IHC: il est suggéré de démasquer l'antigène avec un tampon de TE buffer pH 9,0; (*) À défaut, le démasquage de l'antigène peut être effectué avec un tampon citrate pH 6,0.

Informations générales

PADI2, also named as KIAA0994, PDI2, PAD-H19 and PAD2 (Peptidylarginine deiminase II), belongs to the protein arginine deiminase family. It catalyzes the deimination of arginine residues of proteins. PADI2 may play a regulatory role in the expression of lactation related genes via histone citrullination during diestrus (PMID:20668670). PADI2 has two isoforms with MW 75 kDa and 49 kDa.

Publications notables

Autrice	Pubmed ID	Journal	Application
Jing Bai	32955682	Angiogenesis	WB,IF
Stanley B DeVore	29987187	Mol Cell Biol	
Daniel M Lewallen	26360112	ACS Chem Biol	WB

Stockage

Stockage:

Stocker à -20°C. Stable pendant un an après l'expédition.

Tampon de stockage:

PBS avec azoture de sodium à 0,02 % et glycérol à 50 % pH 7,3

L'aliquotage n'est pas nécessaire pour le stockage à -20C

*** Les 20ul contiennent 0,1% de BSA.

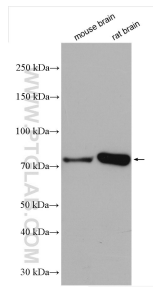
For technical support and original validation data for this product please contact:

T: 1 (888) 4PTGLAB (1-888-478-4522) (toll free in USA), or 1(312) 455-8498 (outside USA)

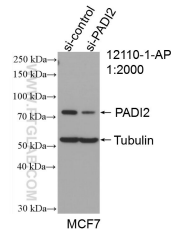
E: proteintech@ptglab.com
W: ptglab.com

This product is exclusively available under Proteintech Group brand and is not available to purchase from any other manufacturer.

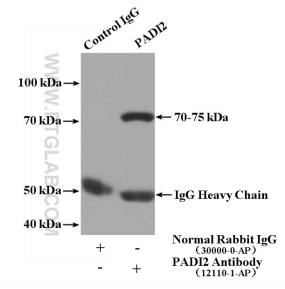
Données de validation sélectionnées



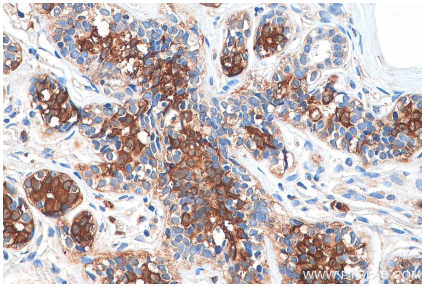
Various lysates were subjected to SDS PAGE followed by western blot with 12110-1-AP (PADI2 antibody) at dilution of 1:1000 incubated at room temperature for 1.5 hours.



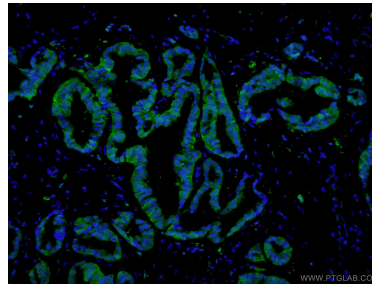
WB result of PADI2 antibody (12110-1-AP; 1:2000; incubated at room temperature for 1.5 hours) with sh-Control and sh-PADI2 transfected MCF-7 cells.



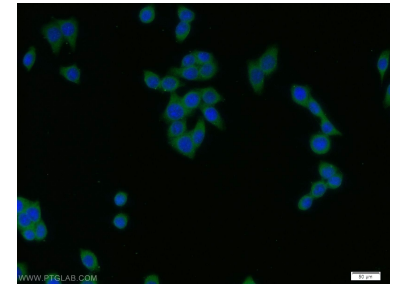
IP Result of anti-PADI2 (IP:12110-1-AP, 3ug; Detection:12110-1-AP 1:300) with mouse brain tissue lysate 3600ug.



Immunohistochemical analysis of paraffin-embedded human breast cancer tissue slide using 12110-1-AP (PADI2 antibody) at dilution of 1:200 (under 40x lens). Heat mediated antigen retrieval with Tris-EDTA buffer (pH 9.0).



Immunofluorescent analysis of (4% PFA) fixed human breast cancer tissue using 12110-1-AP (PADI2 antibody) at dilution of 1:50 and Alexa Fluor 488-conjugated AffiniPure Goat Anti-Rabbit IgG(H+L).



Immunofluorescent analysis of BxPC-3 cells using 12110-1-AP (PADI2 antibody) at dilution of 1:25 and Alexa Fluor 488-conjugated AffiniPure Goat Anti-Rabbit IgG(H+L).