

À des fins de recherche uniquement

# Anticorps Polyclonal de lapin anti-AP1M1



Numéro de catalogue: 12112-1-AP

Phare

7 Publications

## Informations de base

Numéro de catalogue:  
12112-1-AP

Taille:  
150ul, Concentration: 200 µg/ml by Nanodrop and 133 µg/ml by Bradford method using BSA as the standard;

Hôte:  
Lapin

Isotype:  
IgG

Immunogen Catalog Number:  
AG2757

Numéro d'acquisition GenBank:  
BC017469

Identification du gène (NCBI):  
8907

Nom complet:  
adaptor-related protein complex 1, mu 1 subunit

MW calculé  
423 aa, 49 kDa

MW observés:  
49 kDa

Méthode de purification:  
Purification par affinité contre l'antigène

Dilutions recommandées:  
WB 1:500-1:1000  
IP 0.5-4.0 ug for IP and 1:500-1:1000 for WB

## Applications

Applications testées:  
IP, WB, ELISA

Demandes citées:  
IF, WB

Spécificité de l'espèce:  
Humain, rat, souris

Espèces citées:  
canin, Humain, souris

Contrôles positifs:

WB : tissu cérébral humain, cellules HaCaT

IP : cellules SH-SY5Y,

## Informations générales

AP1M1, also named as CLTNM, Mu-adaptin 1 and Clathrin coat assembly protein AP47, belongs to the adaptor complexes medium subunit family. It is a subunit of clathrin-associated adaptor protein complex 1 that plays a role in protein sorting in the trans-Golgi network (TGN) and endosomes. The AP complexes mediate the recruitment of clathrin to membranes and the recognition of sorting signals within the cytosolic tails of transmembrane cargo molecules.

## Publications notables

Autrice	Pubmed ID	Journal	Application
Ying Liu	36261523	Nature	WB
Rajesh Abraham Jacob	28577469	Virology	WB
Saitoh Masao M	23675417	PLoS One	WB

## Stockage

Stockage:

Stocker à -20°C. Stable pendant un an après l'expédition.

Tampon de stockage:

PBS avec azoture de sodium à 0,02 % et glycérol à 50 % pH 7,3

L'aliquotage n'est pas nécessaire pour le stockage à -20C

\*\*\* Les 20ul contiennent 0,1% de BSA.

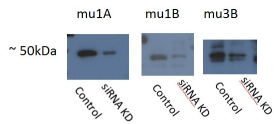
For technical support and original validation data for this product please contact:

T: 1 (888) 4PTGLAB (1-888-478-4522) (toll free in USA), or 1(312) 455-8498 (outside USA)

E: [proteintech@ptglab.com](mailto:proteintech@ptglab.com)  
W: [ptglab.com](http://ptglab.com)

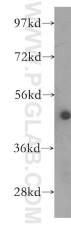
This product is exclusively available under Proteintech Group brand and is not available to purchase from any other manufacturer.

## Données de validation sélectionnées

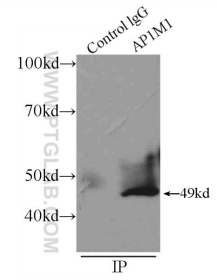


AP1M1 is mu1A: 12112-1-AP,  
AP1M2 is mu1B: 10618-1-AP,  
Ap3M2 is mu3B: 11925-1-AP,  
acceptable bands ~50 kDa showing  
some degree of siRNA  
knockdown

WB result of AP1M1 antibody (12112-1-AP, 1:500)  
with siRNA cell lysate.



human brain tissue were subjected to SDS PAGE  
followed by western blot with 12112-1-AP (AP1M1  
antibody) at dilution of 1:400 incubated at room  
temperature for 1.5 hours.



IP Result of anti-AP1M1 (IP:12112-1-AP, 4ug;  
Detection:12112-1-AP 1:500) with SH-SY5Y cells  
lysate 2500ug.