

À des fins de recherche uniquement

# Anticorps Polyclonal de lapin anti-AP3M1



Numéro de catalogue: 12114-1-AP

Phare

2 Publications

## Informations de base

<b>Numéro de catalogue:</b> 12114-1-AP	<b>Numéro d'acquisition GenBank:</b> BC026232	<b>Méthode de purification:</b> Purification par affinité contre l'antigène
<b>Taille:</b> 150ul , Concentration: 500 µg/ml by Nanodrop;	<b>Identification du gène (NCBI):</b> 26985	<b>Dilutions recommandées:</b> WB 1:1000-1:6000 IF 1:50-1:500
<b>Hôte:</b> Lapin	<b>Nom complet:</b> adaptor-related protein complex 3, mu 1 subunit	
<b>Isotype:</b> IgG	<b>MW calculé</b> 418 aa, 47 kDa	
<b>Immunogen Catalog Number:</b> AG2759	<b>MW observés:</b> 47 kDa	

## Applications

<b>Applications testées:</b> IF, WB, ELISA	<b>Contrôles positifs:</b> WB : cellules HEK-293, cellules NIH/3T3 IF : cellules HeLa,
<b>Demandes citées:</b> WB	
<b>Spécificité de l'espèce:</b> Humain, souris	
<b>Espèces citées:</b> Humain, rat	

## Informations générales

Adaptor protein (AP) complexes are cytosolic heterotetramers that mediate the sorting of membrane proteins in the secretory and endocytic pathways. AP3M1 is a subunit of the AP-3 complex which is composed of two large adaptins (AP3D1 and AP3B1 or AP3B2), a medium adaptin (AP3M1 or AP3M2) and a small adaptin (APS1 or AP3S2). AP-3 complex is associated with the Golgi region as well as more peripheral structures. It facilitates the budding of vesicles from the Golgi membrane and may be directly involved in trafficking to lysosomes.

## Publications notables

Autrice	Pubmed ID	Journal	Application
Qi Song	36183948	J Ethnopharmacol	WB
Guo Yusong Y	23326640	Elife	WB

## Stockage

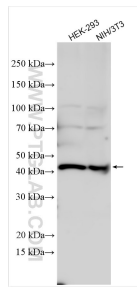
**Stockage:**  
Stocker à -20°C. Stable pendant un an après l'expédition.  
**Tampon de stockage:**  
PBS avec azoture de sodium à 0,02 % et glycérol à 50 % pH 7,3  
L'aliquotage n'est pas nécessaire pour le stockage à -20C

\*\*\* Les 20ul contiennent 0,1% de BSA.

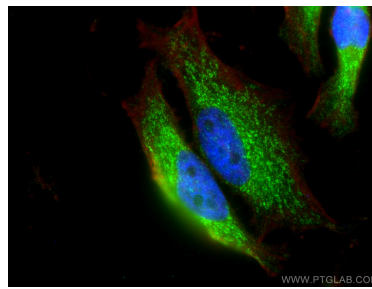
For technical support and original validation data for this product please contact:  
T: 1 (888) 4PTGLAB (1-888-478-4522) (toll free in USA), or 1(312) 455-8498 (outside USA)  
E: proteintech@ptglab.com  
W: ptglab.com

This product is exclusively available under Proteintech Group brand and is not available to purchase from any other manufacturer.

## Données de validation sélectionnées



Various lysates were subjected to SDS PAGE followed by western blot with 12114-1-AP (AP3M1 antibody) at dilution of 1:3000 incubated at room temperature for 1.5 hours.



Immunofluorescent analysis of (4% PFA) fixed HeLa cells using AP3M1 antibody (12114-1-AP) at dilution of 1:200 and Coralite@488-Conjugated AffiniPure Goat Anti-Rabbit IgG(H+L), CL594-phalloidin (red).