

À des fins de recherche uniquement

Anticorps Polyclonal de lapin anti-ETS1



Numéro de catalogue: 12118-1-AP

Phare

9 Publications

Informations de base

Numéro de catalogue: 12118-1-AP	Numéro d'acquisition GenBank: BC017314	Méthode de purification: Purification par affinité contre l'antigène
Taille: 150ul , Concentration: 400 µg/ml by Nanodrop and 200 µg/ml by Bradford method using BSA as the standard;	Identification du gène (NCBI): 2113	Dilutions recommandées: WB 1:500-1:1000 IF 1:200-1:800
Hôte: Lapin	Nom complet: v-ets erythroblastosis virus E26 oncogene homolog 1 (avian)	
Isotype: IgG	MW calculé 441 aa, 50 kDa	
Immunogen Catalog Number: AG2127	MW observés: 50 kDa	

Applications

Applications testées: IF, WB, ELISA	Contrôles positifs: WB : cellules Jurkat, cellules NIH/3T3, tissu de thymus de souris IF : cellules A431,
Demandes citées: WB	
Spécificité de l'espèce: Humain, souris	
Espèces citées: Humain, rat	

Informations générales

ETS1 is a member of the ETS family of transcription factors, which are defined by the presence of a conserved ETS DNA-binding domain that recognizes the core consensus DNA sequence GGAA/T in target genes. ETS1 is a nuclear protein and primarily acts as a transcriptional activator, though it can also repress gene transcription. Since it is primarily expressed in lymphocytes, it plays several critical roles in immunity. In addition, it is important for angiogenesis. Since cells express several Ets proteins at the same time, functional redundancy is possible. This is particularly shown for the so-called housekeeping genes where several Ets factors were found to occupy the proximal promoters in vivo. The ETS1 protein exists as three isoforms: ETS1-p51, ETS1-p42, ETS1-p27 ranging in size from 27 to 51 kDa.

Publications notables

Autrice	Pubmed ID	Journal	Application
Qiong Zhang	34545078	Nat Commun	WB
Yang Duan	27626484	Oncotarget	WB
Jing Li	34820381	Front Cell Dev Biol	WB

Stockage

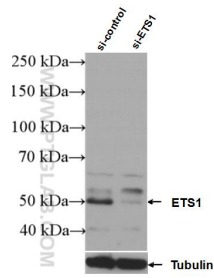
Stockage:
Stocker à -20°C. Stable pendant un an après l'expédition.
Tampon de stockage:
PBS avec azoture de sodium à 0,02 % et glycérol à 50 % pH 7,3
L'aliquotage n'est pas nécessaire pour le stockage à -20C

*** Les 20ul contiennent 0,1% de BSA.

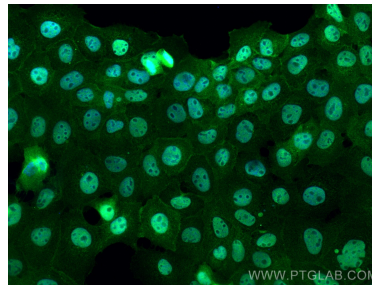
For technical support and original validation data for this product please contact:
T: 1 (888) 4PTGLAB (1-888-478-4522) (toll free in USA), or 1(312) 455-8498 (outside USA)
E: proteintech@ptglab.com
W: ptglab.com

This product is exclusively available under Proteintech Group brand and is not available to purchase from any other manufacturer.

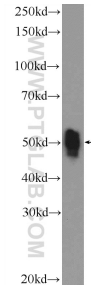
Données de validation sélectionnées



WB result of ETS1 antibody (12118-1-AP; 1:3000; incubated at room temperature for 1.5 hours) with sh-Control and sh-ETS1 transfected Jurkat cells.



Immunofluorescent analysis of (4% PFA) fixed A431 cells using ETS1 antibody (12118-1-AP) at dilution of 1:400 and CoraLite®488-Conjugated AffiniPure Goat Anti-Rabbit IgG(H+L).



Jurkat cells were subjected to SDS PAGE followed by western blot with 12118-1-AP (ETS1 Antibody) at dilution of 1:600 incubated at room temperature for 1.5 hours.