

À des fins de recherche uniquement

Anticorps Polyclonal de lapin anti-SAP130



Numéro de catalogue: 12130-1-AP

Informations de base

Numéro de catalogue:
12130-1-AP

Taille:
150ul, Concentration: 200 µg/ml by
Nanodrop and 187 µg/ml by Bradford
method using BSA as the standard;

Hôte:
Lapin

Isotype:
IgG

Immunogen Catalog Number:
AG2774

Numéro d'acquisition GenBank:
BC017453

Identification du gène (NCBI):
79595

Nom complet:
Sin3A-associated protein, 130kDa

MW calculé
110 kDa

MW observés:
130 kDa

Méthode de purification:
Purification par affinité contre
l'antigène

Dilutions recommandées:
WB 1:500-1:2000
IP 0.5-4.0 ug for IP and 1:500-1:1000
for WB
IHC 1:20-1:200
IF 1:50-1:500

Applications

Applications testées:
IF, IHC, IP, WB, ELISA

Spécificité de l'espèce:
Humain, rat, souris

**Remarque-IHC: il est suggéré de démasquer
l'antigène avec un tampon de TE buffer pH
9.0; (*) À défaut, 'le démasquage de
l'antigène peut être 'effectué avec un
tampon citrate pH 6,0.**

Contrôles positifs:

WB : cellules HEK-293, cellules HeLa, cellules HepG2,
cellules Jurkat, cellules K-562

IP : cellules HepG2,

IHC : tissu de cancer du pancréas humain,

IF : cellules HepG2,

Informations générales

SF3b is a U2 snRNP-associated protein complex essential for spliceosome assembly. SF3b contains the spliceosomal proteins SAP 49, SAP 130, SAP 145, and SAP 155. SAP 130, SAP 145, and SAP 155 are present in a protein complex and associate with one another. While SAP 155 and SAP 130 interact with each other (directly or indirectly) within this complex, SAP 49 and SAP 145 are known to interact directly with each other. Unexpectedly, the SAP 49-SAP 145 protein-protein interaction requires the amino-terminus of SAP 49, which contains two RNA-recognition motifs. The observation that SAP 49 and SAP 145 interact directly with both U2 snRNP and the pre-mRNA suggests that this protein complex plays a role in tethering U2 snRNP to the branch site.

Stockage

Stockage:

Stocker à -20°C. Stable pendant un an après l'expédition.

Tampon de stockage:

PBS avec azoture de sodium à 0,02 % et glycérol à 50 % pH 7,3

L'aliquotage n'est pas nécessaire pour le stockage à -20C

*** Les 20ul contiennent 0,1% de BSA.

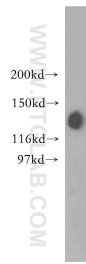
For technical support and original validation data for this product please contact:

T: 1 (888) 4PTGLAB (1-888-478-4522) (toll free
in USA), or 1(312) 455-8498 (outside USA)

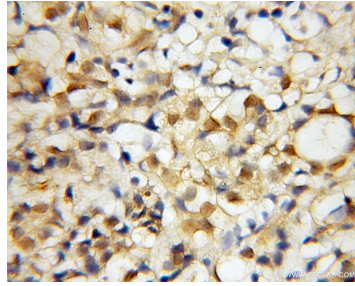
E: proteintech@ptglab.com
W: ptglab.com

This product is exclusively available under Proteintech Group brand and is not available to purchase from any other manufacturer.

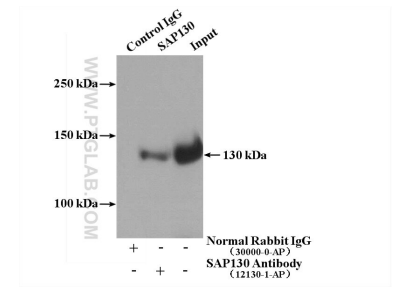
Données de validation sélectionnées



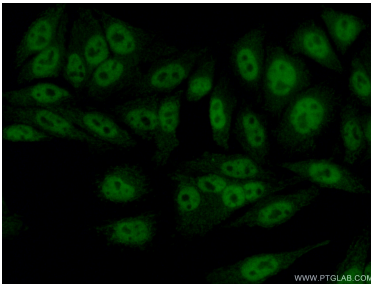
HEK-293 cells were subjected to SDS PAGE followed by western blot with 12130-1-AP (SAP130 antibody) at dilution of 1:400 incubated at room temperature for 1.5 hours.



Immunohistochemical analysis of paraffin-embedded human pancreas cancer using 12130-1-AP (SAP130 antibody) at dilution of 1:50 (under 10x lens).



IP Result of anti-SAP130 (IP:12130-1-AP, 4ug; Detection:12130-1-AP 1:600) with HepG2 cells lysate 1000ug.



Immunofluorescent analysis of (10% Formaldehyde) fixed HepG2 cells using 12130-1-AP (SAP130 antibody) at dilution of 1:50 and Alexa Fluor 488-conjugated AffiniPure Goat Anti-Rabbit IgG(H+L).