

À des fins de recherche uniquement

Anticorps Polyclonal de lapin anti-CIN85



Numéro de catalogue: 12132-1-AP

Phare

3 Publications

Informations de base

Numéro de catalogue:
12132-1-AP

Taille:
150ul, Concentration: 700 µg/ml by Nanodrop and 333 µg/ml by Bradford method using BSA as the standard;

Hôte:
Lapin

Isotype:
IgG

Immunogen Catalog Number:
AG2777

Numéro d'acquisition GenBank:
BC015806

Identification du gène (NCBI):
30011

Nom complet:
SH3-domain kinase binding protein 1

MW calculé
665 aa, 73 kDa

MW observés:
85 kDa

Méthode de purification:
Purification par affinité contre l'antigène

Dilutions recommandées:
WB 1:2000-1:10000

Applications

Applications testées:
WB, ELISA

Demandes citées:
IF, IHC, WB

Spécificité de l'espèce:
Humain

Espèces citées:
Humain

Contrôles positifs:

WB : cellules Raji, cellules Jurkat, cellules NIH/3T3, cellules Ramos, cellules THP-1, tissu cérébral humain foetal

Informations générales

CIN85 is identified as a Cbl-interacting protein of 85 kDa and belongs to adaptor/scaffold proteins. It composed of three N-terminal SH3 domains followed by a proline-rich region and a C-terminal coiled-coil region. In association with c-Cbl (Casitas B-lineage lymphoma), an E3 ubiquitin ligase. As an adaptor protein, CIN85 is involved in Cbl-dependent EGFR internalization, intracellular receptor trafficking, sorting and degradation. Moreover, through the SH3 domains and the proline-rich region, CIN85 is implicated in many protein-protein interactions and it is found to play important roles in other processes such as apoptosis, rearrangement of actin cytoskeleton, cell adhesion, immunological synapse, cell migration and invasion.

Publications notables

Autrice	Pubmed ID	Journal	Application
Ma Yaxi Y	20882291	Arch Gynecol Obstet	IHC
Ihor Yakymovych	26169354	J Cell Biol	WB, IF
Yoon Hye-Young HY	21275903	Biol Cell	WB

Stockage

Stockage:

Stocker à -20°C. Stable pendant un an après l'expédition.

Tampon de stockage:

PBS avec azoture de sodium à 0,02 % et glycérol à 50 % pH 7,3

L'aliquotage n'est pas nécessaire pour le stockage à -20C

*** Les 20ul contiennent 0,1% de BSA.

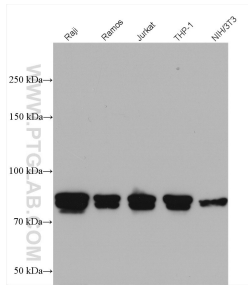
For technical support and original validation data for this product please contact:

T: 1 (888) 4PTGLAB (1-888-478-4522) (toll free in USA), or 1(312) 455-8498 (outside USA)

E: proteintech@ptglab.com
W: ptglab.com

This product is exclusively available under Proteintech Group brand and is not available to purchase from any other manufacturer.

Données de validation sélectionnées



Various lysates were subjected to SDS PAGE followed by western blot with 12132-1-AP (CIN85 antibody) at dilution of 1:5000 incubated at room temperature for 1.5 hours.