

À des fins de recherche uniquement

# Anticorps Polyclonal de lapin anti-LC3



Numéro de catalogue: 12135-1-AP

64 Publications

## Informations de base

Numéro de catalogue:  
12135-1-AP

Taille:  
150ul , Concentration: 200 µg/ml by  
Bradford method using BSA as the  
standard;

Hôte:  
Lapin

Isotype:  
IgG

Immunogen Catalog Number:  
AG2781

Numéro d'acquisition GenBank:  
BC015810

Identification du gène (NCBI):  
84557

Nom complet:  
microtubule-associated protein 1  
light chain 3 alpha

MW calculé  
121 aa, 14 kDa

Méthode de purification:  
Purification par affinité contre  
l'antigène

Dilutions recommandées:  
WB 1:500-1:2000  
IHC 1:50-1:500  
IF 1:50-1:500

## Applications

Applications testées:  
IF, IHC, WB, ELISA

Demandes citées:  
IF, IHC, WB

Spécificité de l'espèce:  
Humain, poisson-zèbre, rat, souris

Espèces citées:  
Humain, porc, poulet, rat, souris

**Remarque-IHC: il est suggéré de démasquer  
l'antigène avec un tampon de TE buffer pH  
9,0; (\*) A défaut, 'le démasquage de  
l'antigène peut être 'effectué avec un  
tampon citrate pH 6,0.**

Contrôles positifs:

WB : cellules HEK-293 traitées à la chloroquine,  
cellules HeLa traitées à la chloroquine

IHC : tissu de cancer du sein humain, tissu de cancer du  
foie humain

IF : cellules HEK-293 traitées par déprivation,

## Informations générales

LC3, also known as microtubule-associated protein 1 light chain 3 (MAP1LC3), is a mammalian homolog of the yeast Atg8p (autophagy-related 8 protein) that is involved in autophagy process. Three isoforms of LC3 exist as LC3A, LC3B, and LC3C. LC3 is first synthesized as pro-LC3, and undergoes C-terminal cleavage to yield a cytosolic precursor known as LC3-I. During autophagy LC3-I is subsequently conjugated to PE lipid as lipidated form: LC3-II. The lipidated form migrates faster on SDS-PAGE gel. The increased the level of LC3-II has been widely used as autophagy marker. This antibody recognizes both LC3-I (18-20 kDa) and LC3-II (14-16 kDa).

## Publications notables

Autrice	Pubmed ID	Journal	Application
Chengni Jin	32910998	Food Chem Toxicol	WB
Xiafang Wu	31781319	Oxid Med Cell Longev	WB
Linqiang Zhang	33075563	Cell Mol Gastroenterol Hepatol	WB

## Stockage

Stockage:  
Stocker à -20°C. Stable pendant un an après l'expédition.

Tampon de stockage:  
PBS avec azoture de sodium à 0,02 % et glycérol à 50 % pH 7,3  
L'aliquotage n'est pas nécessaire pour le stockage à -20C

\*\*\* Les 20ul contiennent 0,1% de BSA.

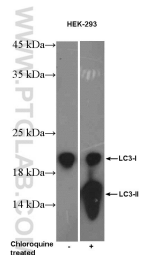
For technical support and original validation data for this product please contact:

T: 1 (888) 4PTGLAB (1-888-478-4522) (toll free  
in USA), or 1(312) 455-8498 (outside USA)

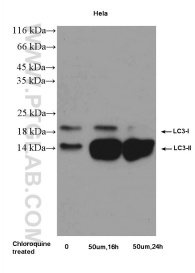
E: proteintech@ptglab.com  
W: ptglab.com

This product is exclusively available under Proteintech Group brand and is not available to purchase from any other manufacturer.

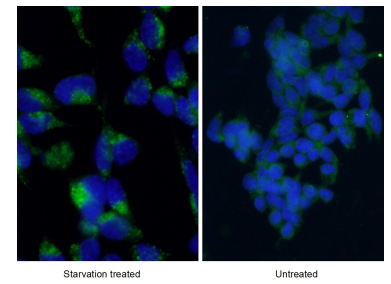
## Données de validation sélectionnées



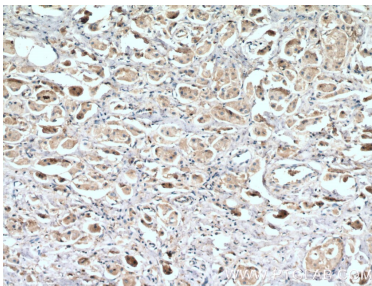
Chloroquine treated HEK-293 cells were subjected to SDS PAGE followed by western blot with 12135-1-AP (LC3 Antibody) at dilution of 1:1000 incubated at room temperature for 1.5 hours.



Chloroquine treated HeLa cells were subjected to SDS PAGE followed by western blot with 12135-1-AP (LC3 Antibody) at dilution of 1:1000 incubated at room temperature for 1.5 hours.



Immunofluorescent analysis of starvation treated HEK-293 cells using 12135-1-AP (LC3 Antibody) at dilution of 1:50 and Alexa Fluor 488-conjugated AffiniPure Goat Anti-Rabbit IgG(H+L). Cells were fixed with ethanol at -20 °C. 20 mM chloroquine was used to block the autophagy flux.



Immunohistochemical analysis of paraffin-embedded human breast cancer tissue slide using 12135-1-AP (LC3 antibody) at dilution of 1:200 (under 10x lens. Heat mediated antigen retrieval with Tris-EDTA buffer (pH 9.0).