

À des fins de recherche uniquement

Anticorps Polyclonal de lapin anti-PRKCSH



Numéro de catalogue: 12148-1-AP

Phare

5 Publications

Informations de base

Numéro de catalogue:
12148-1-AP

Taille:
150ul, Concentration: 1200 µg/ml by
Nanodrop and 533 µg/ml by Bradford
method using BSA as the standard;

Hôte:
Lapin

Isotype:
IgG

Immunogen Catalog Number:
AG2796

Numéro d'acquisition GenBank:
BC013586

Identification du gène (NCBI):

Nom complet:
protein kinase C substrate 80K-H

MW calculé
80 kDa

MW observés:
80 kDa

Méthode de purification:
Purification par affinité contre
l'antigène

Dilutions recommandées:
WB 1:2000-1:8000
IP 0.5-4.0 ug for IP and 1:500-1:2000
for WB
IHC 1:50-1:500
IF 1:50-1:500

Applications

Applications testées:
IF, IHC, IP, WB, ELISA

Demandes citées:
IF, IHC, WB

Spécificité de l'espèce:
Humain, rat, souris

Espèces citées:
Humain, souris

**Remarque-IHC: il est suggéré de démasquer
l'antigène avec un tampon de TE buffer pH
9,0; (*) A défaut, 'le démasquage de
l'antigène peut être 'effectué avec un
tampon citrate pH 6,0.**

Contrôles positifs:

WB : cellules A431, cellules HeLa, cellules Jurkat, tissu
hépatique de rat, tissu hépatique de souris

IP : cellules HeLa,

IHC : tissu rénal humain,

IF : cellules HeLa,

Informations générales

PRKCSH encodes the beta-subunit of glucosidase II, an N-linked glycan-processing enzyme in the endoplasmic reticulum (ER). This protein is an acidic phospho-protein known to be a substrate for protein kinase C. Defects in PRKCSH are a cause of an autosomal dominant polycystic liver disease (PCLD). Glucosidase II is an ER-localized enzyme that contains α and β subunits (Glucosidase II α and Glucosidase II β) which form a defined heterodimeric complex.

Publications notables

Autrice	Pubmed ID	Journal	Application
Ling Leng	35679865	Cell Rep	IHC
Birong Liang	35598104	Exp Physiol	IHC
Gu-Choul Shin	31320625	Nat Commun	WB

Stockage

Stockage:

Stocker à -20°C. Stable pendant un an après l'expédition.

Tampon de stockage:

PBS avec azoture de sodium à 0,02 % et glycérol à 50 % pH 7,3

L'aliquotage n'est pas nécessaire pour le stockage à -20C

*** Les 20ul contiennent 0,1% de BSA.

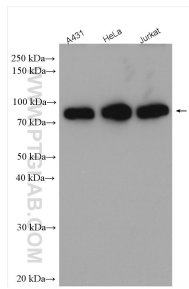
For technical support and original validation data for this product please contact:

T: 1 (888) 4PTGLAB (1-888-478-4522) (toll free
in USA), or 1(312) 455-8498 (outside USA)

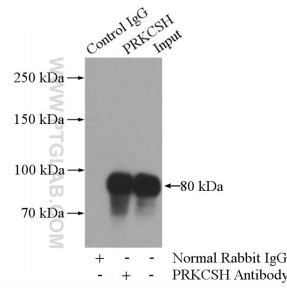
E: proteintech@ptglab.com
W: ptglab.com

This product is exclusively available under Proteintech Group brand and is not available to purchase from any other manufacturer.

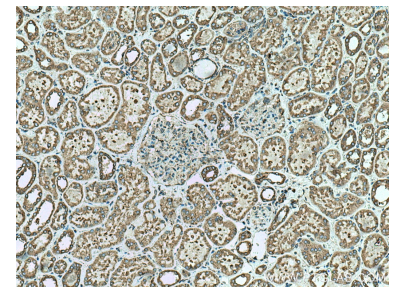
Données de validation sélectionnées



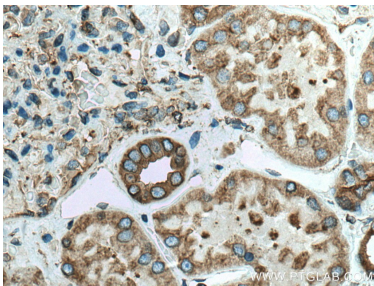
Various lysates were subjected to SDS PAGE followed by western blot with 12148-1-AP (PRKCSH antibody) at dilution of 1:4000 incubated at room temperature for 1.5 hours.



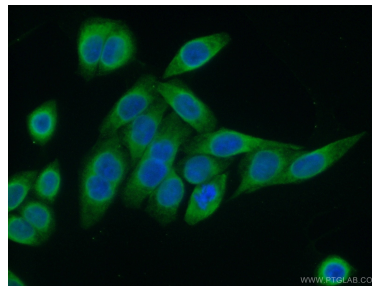
IP Result of anti-PRKCSH (IP:12148-1-AP, 4 μ g; Detection:12148-1-AP 1:1000) with HeLa cells lysate 2000 μ g.



Immunohistochemical analysis of paraffin-embedded human kidney tissue slide using 12148-1-AP (PRKCSH antibody) at dilution of 1:200 (under 10 \times lens). Heat mediated antigen retrieval with Tris-EDTA buffer (pH 9.0).



Immunohistochemical analysis of paraffin-embedded human kidney tissue slide using 12148-1-AP (PRKCSH antibody) at dilution of 1:200 (under 40 \times lens). Heat mediated antigen retrieval with Tris-EDTA buffer (pH 9.0).



Immunofluorescent analysis of (10% Formaldehyde) fixed HeLa cells using 12148-1-AP (PRKCSH antibody) at dilution of 1:50 and Alexa Fluor 488-conjugated AffiniPure Goat Anti-Rabbit IgG(H+L).