

À des fins de recherche uniquement

# Anticorps Polyclonal de lapin anti-Claudin 11



Numéro de catalogue: 12152-1-AP

4 Publications

## Informations de base

Numéro de catalogue:

12152-1-AP

Taille:

150ul, Concentration: 600 µg/ml by Nanodrop and 273 µg/ml by Bradford method using BSA as the standard;

Hôte:

Lapin

Isotype:

IgG

Immunogen Catalog Number:

AG2764

Numéro d'acquisition GenBank:

BC013577

Identification du gène (NCBI):

5010

Nom complet:

claudin 11

MW calculé

207 aa, 22 kDa

MW observés:

22 kDa

Méthode de purification:

Purification par affinité contre l'antigène

Dilutions recommandées:

WB 1:500-1:1000

IHC 1:20-1:200

IF 1:20-1:200

## Applications

Applications testées:

FC, IF, IHC, WB, ELISA

Demandes citées:

IF, WB

Spécificité de l'espèce:

Humain, souris

Espèces citées:

Humain, rat

**Remarque-IHC: il est suggéré de démasquer l'antigène avec un tampon de TE buffer pH 9,0; (\*) A défaut, 'le démasquage de l'antigène peut être 'effectué avec un tampon citrate pH 6,0.**

Contrôles positifs:

WB : tissu testiculaire humain,

IHC : tissu testiculaire humain, tissu cérébral de souris

IF : cellules HepG2,

## Informations générales

Claudins are a family of proteins that are the most important components of the tight junctions, where they establish the paracellular barrier that controls the flow of molecules in the intercellular space between the cells of an epithelium. 23 claudins have been identified. They are small (20-27 kilodalton (kDa)) proteins with very similar structure. They have four transmembrane domains, with the N-terminus and the C-terminus in the cytoplasm.

## Publications notables

Autrice	Pubmed ID	Journal	Application
Zhaoxing Li	30651572	Sci Rep	WB
Raimund Dietze	25666991	Mol Cell Endocrinol	IF
Liping Wang	35984620	J Physiol Biochem	WB

## Stockage

Stockage:

Stocker à -20°C. Stable pendant un an après l'expédition.

Tampon de stockage:

PBS avec azoture de sodium à 0,02 % et glycérol à 50 % pH 7,3

L'aliquotage n'est pas nécessaire pour le stockage à -20C

**\*\*\* Les 20ul contiennent 0,1% de BSA.**

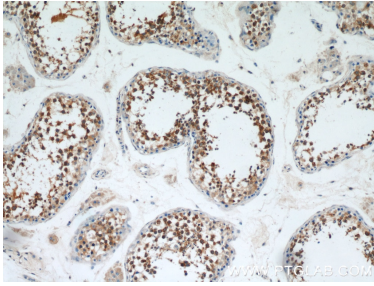
For technical support and original validation data for this product please contact:

T: 1 (888) 4PTGLAB (1-888-478-4522) (toll free in USA), or 1(312) 455-8498 (outside USA)

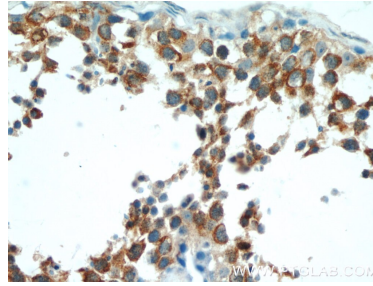
E: [proteintech@ptglab.com](mailto:proteintech@ptglab.com)  
W: [ptglab.com](http://ptglab.com)

**This product is exclusively available under Proteintech Group brand and is not available to purchase from any other manufacturer.**

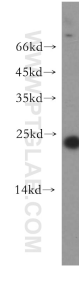
## Données de validation sélectionnées



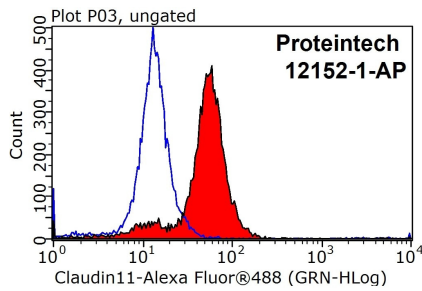
Immunohistochemical analysis of paraffin-embedded human testis using 12152-1-AP (Claudin 11 antibody) at dilution of 1:50 (under 10x lens).



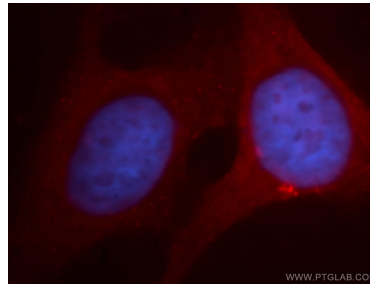
Immunohistochemical analysis of paraffin-embedded human testis using 12152-1-AP (Claudin 11 antibody) at dilution of 1:50 (under 40x lens).



human testis tissue were subjected to SDS PAGE followed by western blot with 12152-1-AP (Claudin 11 antibody) at dilution of 1:500 incubated at room temperature for 1.5 hours.



1X10<sup>6</sup> HepG2 cells were stained with 0.2ug Claudin 11 antibody (12152-1-AP, red) and control antibody (blue). Fixed with 90% MeOH blocked with 3% BSA (30 min). Alexa Fluor 488-conjugated AffiniPure Goat Anti-Rabbit IgG(H+L) with dilution 1:1000.



Immunofluorescent analysis of HepG2 cells, using CLDN11 antibody 12152-1-AP at 1:100 dilution and PE-labeled goat anti-rabbit IgG(red). Blue pseudocolor = DAPI (fluorescent DNA dye).