

À des fins de recherche uniquement

Anticorps Polyclonal de lapin anti-LMBR1L



Numéro de catalogue: 12154-1-AP

Informations de base

Numéro de catalogue:
12154-1-AP

Taille:
150ul, Concentration: 400 µg/ml by Nanodrop and 253 µg/ml by Bradford method using BSA as the standard;

Hôte:
Lapin

Isotype:
IgG

Immunogen Catalog Number:
AG2787

Numéro d'acquisition GenBank:
BC015015

Identification du gène (NCBI):
55716

Nom complet:
limb region 1 homolog (mouse)-like

MW calculé:
489 aa, 55 kDa

MW observés:
57 kDa

Méthode de purification:
Purification par affinité contre l'antigène

Dilutions recommandées:
WB 1:500-1:1000
IP 0.5-4.0 ug for IP and 1:500-1:1000 for WB

Applications

Applications testées:
FC, IP, WB, ELISA

Spécificité de l'espèce:
Humain, rat, souris

Contrôles positifs:

WB : tissu testiculaire de souris, cellules A549, cellules HepG2, tissu hépatique de souris, tissu testiculaire de rat

IP : cellules HepG2,

Informations générales

LMBR1L, also known as LMR (lipocalin-1-interacting membrane receptor), interacts with lipocalin-1 (Lcn-1), a lipocalin member produced by a number of secretory glands and tissues and known to bind a variety of lipophilic compounds. LMBR1L is a 489-amino acid protein with a predicted molecular mass of 55 kD and 9 putative transmembrane helices. LMBR1L has been shown to mediate cellular uptake of LMBR1L, thus it is characterized as an endocytic receptor (PMID: 11287427; 12591932). Alternatively spliced transcript variants encoding different isoforms have been described.

Stockage

Stockage:

Stocker à -20°C. Stable pendant un an après l'expédition.

Tampon de stockage:

PBS avec azoture de sodium à 0,02 % et glycérol à 50 % pH 7,3

L'aliquotage n'est pas nécessaire pour le stockage à -20C

*** Les 20ul contiennent 0,1% de BSA.

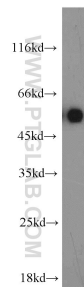
For technical support and original validation data for this product please contact:

T: 1 (888) 4PTGLAB (1-888-478-4522) (toll free in USA), or 1(312) 455-8498 (outside USA)

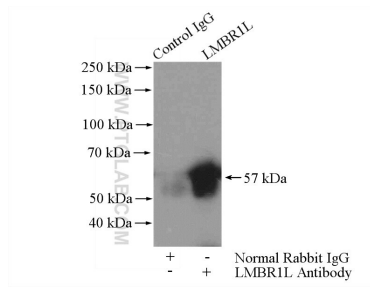
E: proteintech@ptglab.com
W: ptglab.com

This product is exclusively available under Proteintech Group brand and is not available to purchase from any other manufacturer.

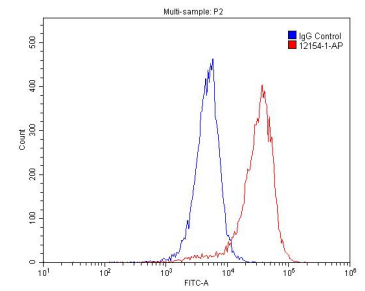
Données de validation sélectionnées



mouse testis tissue were subjected to SDS PAGE followed by western blot with 12154-1-AP (LMBR1L antibody) at dilution of 1:600 incubated at room temperature for 1.5 hours.



IP Result of anti-LMBR1L (IP:12154-1-AP, 4ug; Detection:12154-1-AP 1:500) with HepG2 cells lysate 3200ug.



1X10⁶ A549 cells were stained with 0.2ug LMBR1L antibody (12154-1-AP, red) and control antibody (blue). Fixed with 4% PFA blocked with 3% BSA (30 min). Alexa Fluor 488-conjugated AffiniPure Goat Anti-Rabbit IgG(H+L) with dilution 1:1500.