

À des fins de recherche uniquement

# Anticorps Polyclonal de lapin anti-PAR2



Numéro de catalogue: 12160-1-AP

Phare

6 Publications

## Informations de base

Numéro de catalogue:  
12160-1-AP

Taille:  
150ul, Concentration: 260 µg/ml by Nanodrop and 233 µg/ml by Bradford method using BSA as the standard;

Hôte:  
Lapin

Isotype:  
IgG

Immunogen Catalog Number:  
AG2801

Numéro d'acquisition GenBank:  
BC018130

Identification du gène (NCBI):  
2150

Nom complet:  
coagulation factor II (thrombin) receptor-like 1

MW calculé  
397 aa, 44 kDa

MW observés:  
50-55 kDa

Méthode de purification:  
Purification par affinité contre l'antigène

Dilutions recommandées:  
WB 1:500-1:1000

## Applications

Applications testées:  
WB, ELISA

Demandes citées:  
WB

Spécificité de l'espèce:  
Humain, rat, souris

Espèces citées:  
Humain, rat

Contrôles positifs:

WB : cellules COLO 320,

## Informations générales

Proteinase-activated receptors (PARs) are G protein-coupled receptors activated through cleavage of their N-termini by mainly serine proteases. The family of PARs include four members: PAR1, PAR2, PAR3 and PAR4. PAR2, also known as F2RL1, is expressed in epithelial cells (e.g., lung, gastrointestinal tract), endothelial cells, smooth muscle cells, fibroblasts, nerves, and some immune and inflammatory cells. PAR2 knockout mice and PAR2 agonists and antagonists have implicated PAR2 as a promising target in inflammatory conditions; respiratory, gastrointestinal, metabolic, cardiovascular, and neurological dysfunction; and cancers. (PMID:23895492)

## Publications notables

Autrice	Pubmed ID	Journal	Application
Chi Liu	35570225	Med Oncol	WB
Yuju Kim	35269499	Cells	WB
Mei-Kwan Yau	23895492	J Med Chem	

## Stockage

Stockage:

Stocker à -20°C. Stable pendant un an après l'expédition.

Tampon de stockage:

PBS avec azoture de sodium à 0,02 % et glycérol à 50 % pH 7,3

L'aliquotage n'est pas nécessaire pour le stockage à -20C

\*\*\* Les 20ul contiennent 0,1% de BSA.

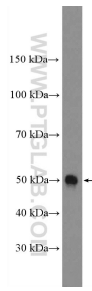
For technical support and original validation data for this product please contact:

T: 1 (888) 4PTGLAB (1-888-478-4522) (toll free in USA), or 1(312) 455-8498 (outside USA)

E: proteintech@ptglab.com  
W: ptglab.com

This product is exclusively available under Proteintech Group brand and is not available to purchase from any other manufacturer.

## Données de validation sélectionnées



COLO 320 cells were subjected to SDS PAGE followed by western blot with 12160-1-AP (PAR2) antibody at dilution of 1:600 incubated at room temperature for 1.5 hours.