

À des fins de recherche uniquement

# Anticorps Polyclonal de lapin anti-SMAD5



Numéro de catalogue: 12167-1-AP

Phare

18 Publications

## Informations de base

Numéro de catalogue:  
12167-1-AP

Taille:  
150ul, Concentration: 133 µg/ml by  
Bradford method using BSA as the  
standard;

Hôte:  
Lapin

Isotype:  
IgG

Immunogen Catalog Number:  
AG2809

Numéro d'acquisition GenBank:  
BC009682

Identification du gène (NCBI):  
4090

Nom complet:  
SMAD family member 5

MW calculé  
465 aa, 52 kDa

MW observés:  
52 kDa

Méthode de purification:  
Purification par affinité contre  
l'antigène

Dilutions recommandées:  
WB 1:500-1:2000  
IP 0.5-4.0 ug for IP and 1:500-1:2000  
for WB  
IF 1:10-1:100

## Applications

Applications testées:  
FC, IF, IP, WB, ELISA

Demandes citées:  
FC, WB

Spécificité de l'espèce:  
Humain, rat, souris

Espèces citées:  
Humain, rat, souris

Contrôles positifs:

WB : cellules K-562,

IP : cellules K-562,

IF : cellules MCF-7,

## Informations générales

SMAD5, also named as MADH5 and JV5-1, is a transcriptional modulator activated by BMP (bone morphogenetic proteins) type 1 receptor kinase. SMAD5 is a receptor-regulated SMAD (R-SMAD). It plays a critical role in the signaling pathway by which TGF-beta inhibits the proliferation of human hematopoietic progenitor cells.

## Publications notables

Autrice	Pubmed ID	Journal	Application
Xueni Wang	32879393	Sci Rep	WB
Jinliang Chen	29715457	Biochem Biophys Res Commun	WB
Wei Peng	35314669	Cell Death Dis	WB

## Stockage

Stockage:

Stocker à -20°C. Stable pendant un an après l'expédition.

Tampon de stockage:

PBS avec azoture de sodium à 0,02 % et glycérol à 50 % pH 7,3

L'aliquotage n'est pas nécessaire pour le stockage à -20C

\*\*\* Les 20ul contiennent 0,1% de BSA.

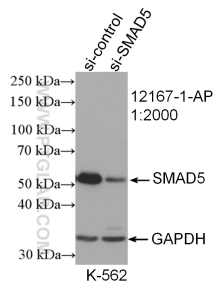
For technical support and original validation data for this product please contact:

T: 1 (888) 4PTGLAB (1-888-478-4522) (toll free  
in USA), or 1(312) 455-8498 (outside USA)

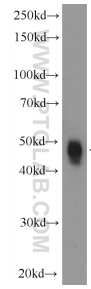
E: proteintech@ptglab.com  
W: ptglab.com

This product is exclusively available under Proteintech Group brand and is not available to purchase from any other manufacturer.

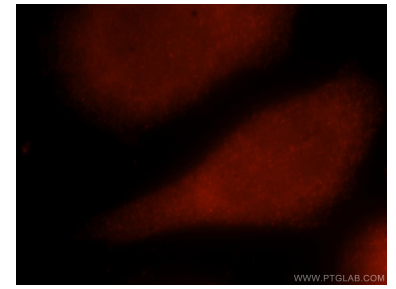
## Données de validation sélectionnées



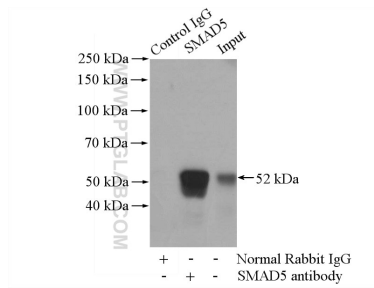
WB result of SMAD5 antibody (12167-1-AP; 1:2000; incubated at room temperature for 1.5 hours) with sh-Control and sh-SMAD5 transfected K-562 cells.



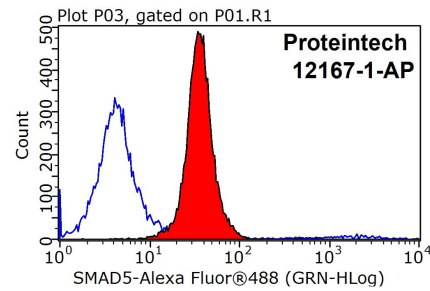
K-562 cells were subjected to SDS PAGE followed by western blot with 12167-1-AP (SMAD5 Antibody) at dilution of 1:1000 incubated at 4 degree celsius over night.



Immunofluorescent analysis of MCF-7 cells, using SMAD5 antibody 12167-1-AP at 1:25 dilution and Rhodamine-labeled goat anti-rabbit IgG (red).



IP Result of anti-SMAD5 (IP:12167-1-AP, 4ug; Detection:12167-1-AP 1:1000) with K-562 cells lysate 3200ug.



1x10<sup>6</sup> MCF-7 cells were stained with 0.2ug SMAD5 antibody (12167-1-AP, red) and control antibody (blue). Fixed with 90% MeOH blocked with 3% BSA (30 min). Alexa Fluor 488-conjugated AffiniPure Goat Anti-Rabbit IgG(H+L) with dilution 1:1000.