

À des fins de recherche uniquement

# Anticorps Polyclonal de lapin anti-FKBP10/FKBP65



Numéro de catalogue: 12172-1-AP

Phare

18 Publications

## Informations de base

Numéro de catalogue:  
12172-1-AP

Taille:  
150ul, Concentration: 650 µg/ml by Nanodrop and 367 µg/ml by Bradford method using BSA as the standard;

Hôte:  
Lapin

Isotype:  
IgG

Immunogen Catalog Number:  
AG2814

Numéro d'acquisition GenBank:  
BC016467

Identification du gène (NCBI):  
60681

Nom complet:  
FK506 binding protein 10, 65 kDa

MW calculé  
582 aa, 64 kDa

MW observés:  
64 kDa

Méthode de purification:  
Purification par affinité contre l'antigène

Dilutions recommandées:  
WB 1:2000-1:16000  
IP 0.5-4.0 ug for IP and 1:500-1:1000 for WB  
IHC 1:50-1:500

## Applications

Applications testées:  
IHC, IP, WB, ELISA

Demandes citées:  
IF, IHC, WB

Spécificité de l'espèce:  
Humain, souris

Espèces citées:  
Humain, poulet, souris

**Remarque-IHC: il est suggéré de démasquer l'antigène avec un tampon de TE buffer pH 9,0; (\*) A défaut, 'le démasquage de l'antigène peut être effectué avec un tampon citrate pH 6,0.**

Contrôles positifs:

WB : cellules HEK-293, cellules HeLa, cellules NIH/3T3, tissu cérébral humain foetal, tissu placentaire humain, tissu rénal humain

IP : cellules HEK-293,

IHC : tissu de tumeur ovarienne humain,

## Informations générales

FKBP10, also known as FKBP65, is a 65 kDa FK506 binding protein that is a member of the FKBP-type peptidyl-prolyl cis/trans isomerase family. This protein localizes to the endoplasmic reticulum and acts as a molecular chaperone and binding partner of type I collagen. FKBP65 is expressed in developing tissues and re-expressed in adult tissues following injury. As documented, FKBP10 has been detected to play important roles in the initiation and progression of cancers.

## Publications notables

Autrice	Pubmed ID	Journal	Application
Hiroyuki Yamaguchi	32988591	Biochem Biophys Res Commun	IHC,WB
Stefan Schorr	32133789	FEBS J	WB
Rutger A F Gjaltema	27298363	Proc Natl Acad Sci U S A	WB,IF

## Stockage

Stockage:

Stocker à -20°C. Stable pendant un an après l'expédition.

Tampon de stockage:

PBS avec azoture de sodium à 0,02 % et glycérol à 50 % pH 7,3

L'aliquotage n'est pas nécessaire pour le stockage à -20C

\*\*\* Les 20ul contiennent 0,1% de BSA.

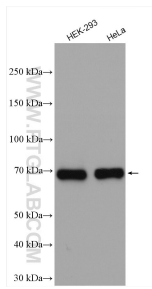
For technical support and original validation data for this product please contact:

T: 1 (888) 4PTGLAB (1-888-478-4522) (toll free in USA), or 1(312) 455-8498 (outside USA)

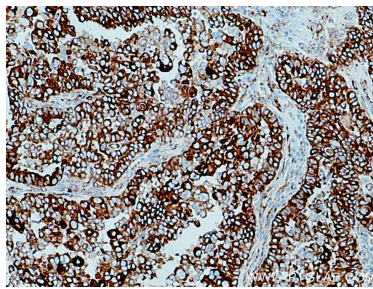
E: proteintech@ptglab.com  
W: ptglab.com

This product is exclusively available under Proteintech Group brand and is not available to purchase from any other manufacturer.

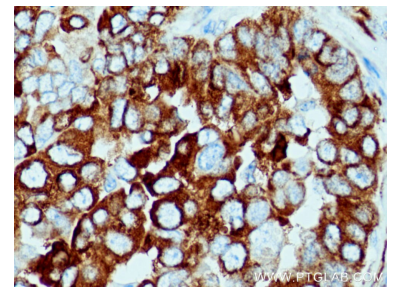
## Données de validation sélectionnées



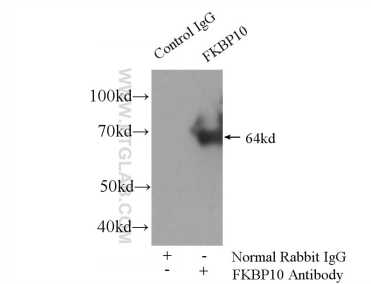
Various lysates were subjected to SDS PAGE followed by western blot with 12172-1-AP (FKBP65 antibody) at dilution of 1:8000 incubated at room temperature for 1.5 hours.



Immunohistochemical analysis of paraffin-embedded human ovary tumor tissue slide using 12172-1-AP (FKBP65 antibody) at dilution of 1:200 (under 10x lens). Heat mediated antigen retrieval with Tris-EDTA buffer (pH 9.0).



Immunohistochemical analysis of paraffin-embedded human ovary tumor tissue slide using 12172-1-AP (FKBP65 antibody) at dilution of 1:200 (under 40x lens). Heat mediated antigen retrieval with Tris-EDTA buffer (pH 9.0).



IP Result of anti-FKBP65 (IP:12172-1-AP, 4ug; Detection:12172-1-AP 1:600) with HEK-293 cells lysate 2800ug.