

À des fins de recherche uniquement

# Anticorps Polyclonal de lapin anti-NARF



Numéro de catalogue: 12173-1-AP

## Informations de base

<b>Numéro de catalogue:</b> 12173-1-AP	<b>Numéro d'acquisition GenBank:</b> BC016440	<b>Méthode de purification:</b> Purification par affinité contre l'antigène
<b>Taille:</b> 150ul , Concentration: 133 µg/ml by Bradford method using BSA as the standard;	<b>Identification du gène (NCBI):</b> 26502	<b>Dilutions recommandées:</b> WB 1:500-1:3000
<b>Hôte:</b> Lapin	<b>Nom complet:</b> nuclear prelamin A recognition factor	
<b>Isotype:</b> IgG	<b>MW calculé</b> 46 kDa, 53 kDa	
<b>Immunogen Catalog Number:</b> AG2816	<b>MW observés:</b> 52 kDa	

## Applications

<b>Applications testées:</b> WB,ELISA	<b>Contrôles positifs:</b> WB : tissu hépatique humain, tissu placentaire humain, tissu pulmonaire humain, tissu testiculaire de souris
<b>Spécificité de l'espèce:</b> Humain, rat, souris	

## Informations générales

Prelamin A, is processed in the nucleus to lamin A by removal of its final 18 amino acids, including the cysteine residue in its C-terminal CAAX box, which is farnesylated. Nuclear prelamin A recognition factor (NARF) binds the farnesylated prelamin A C-terminal domain(preAct)(PMID:10514485). NARF, at 52 kDa, also named as IOP2, is a small enough protein to freely diffuse through the nuclear pore complex and may be retained within the nucleus by binding nuclear proteins and it has all of the information necessary to be imported into the nucleus(PMID:10514485). It has 3 isoforms produced by alternative splicing with the molecular mass of 51 kDa, 56 kDa and 46 kDa, respectively.

## Stockage

**Stockage:**  
Stocker à -20°C. Stable pendant un an après l'expédition.  
**Tampon de stockage:**  
PBS avec azoture de sodium à 0,02 % et glycérol à 50 % pH 7,3  
L'aliquotage n'est pas nécessaire pour le stockage à -20C

\*\*\* Les 20ul contiennent 0,1% de BSA.

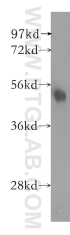
For technical support and original validation data for this product please contact:

T: 1 (888) 4PTGLAB (1-888-478-4522) (toll free in USA), or 1(312) 455-8498 (outside USA)

E: proteintech@ptglab.com  
W: ptglab.com

This product is exclusively available under Proteintech Group brand and is not available to purchase from any other manufacturer.

## Données de validation sélectionnées



human liver tissue were subjected to SDS PAGE followed by western blot with 12173-1-AP (NARF antibody) at dilution of 1:400 incubated at room temperature for 1.5 hours.